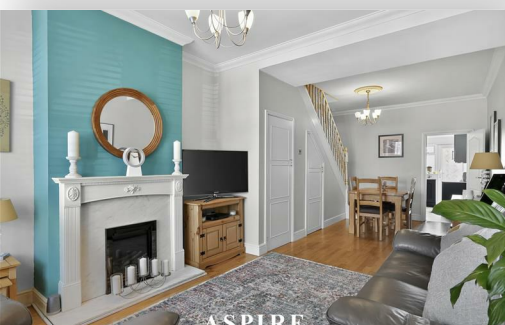


To arrange a viewing contact us
today on 01268 777400



Station Avenue, Southend-On-Sea Guide price £290,000

*** GUIDE PRICE £290,000 - £300,000 ***

Aspire are pleased to present this extended two-bedroom mid terrace home, offering spacious and practical accommodation throughout.

The ground floor features a bright lounge/dining room, providing a generous living and entertaining space, along with useful downstairs storage. The modern fitted kitchen offers ample cupboard space and a range of integrated appliances, including oven, hob, extractor, microwave and dishwasher.

To the rear, the property has been extended to create a well-sized ground floor bathroom, fitted with a three-piece suite.

Upstairs, there are two well proportioned bedrooms, with bedroom two benefiting from fitted wardrobes.

Externally, the property offers a private rear garden, providing a peaceful space to relax, entertain or enjoy during the warmer months.

Ideally positioned close to local amenities, schools, transport links and Southend seafront, this home would make a fantastic first-time purchase, investment or family home.

www.aspireestateagents.co.uk

Proch

Lounge / Diner

24'7" x 11'5" (7.5 x 3.49)

Kitchen

11'5" x 10'2" (3.49 x 3.12)

Bathroom

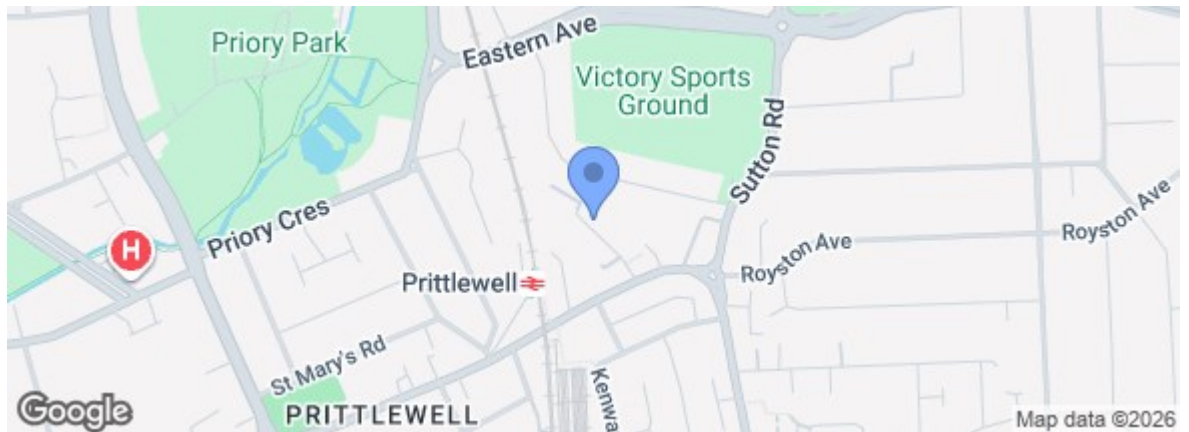
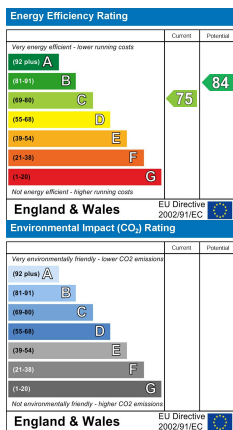
Bedroom One

11'5" x 11'0" (3.49 x 3.36)

Bedroom Two

10'11" x 8'3" (3.33 x 2.52)

Garden



Under the Property Misdescriptions Act 1991 we make every effort to ensure our sales details are accurate but they are a general outline and do not constitute any part of an offer or contract. Any services, equipment and fittings have not been tested and no warranty can be given as to their condition. We strongly recommend that all the information provided be verified by your advisors and in particular, measurements required for a specific purpose such as fitted furniture or carpets. Please tell us if you have any problems and members of our branches will help either over the phone or in person. A copy of our complaints procedure is available on request. The details are issued on the strict understanding that any negotiations in respect of the property named herein are conducted through Aspire Estate Agents.