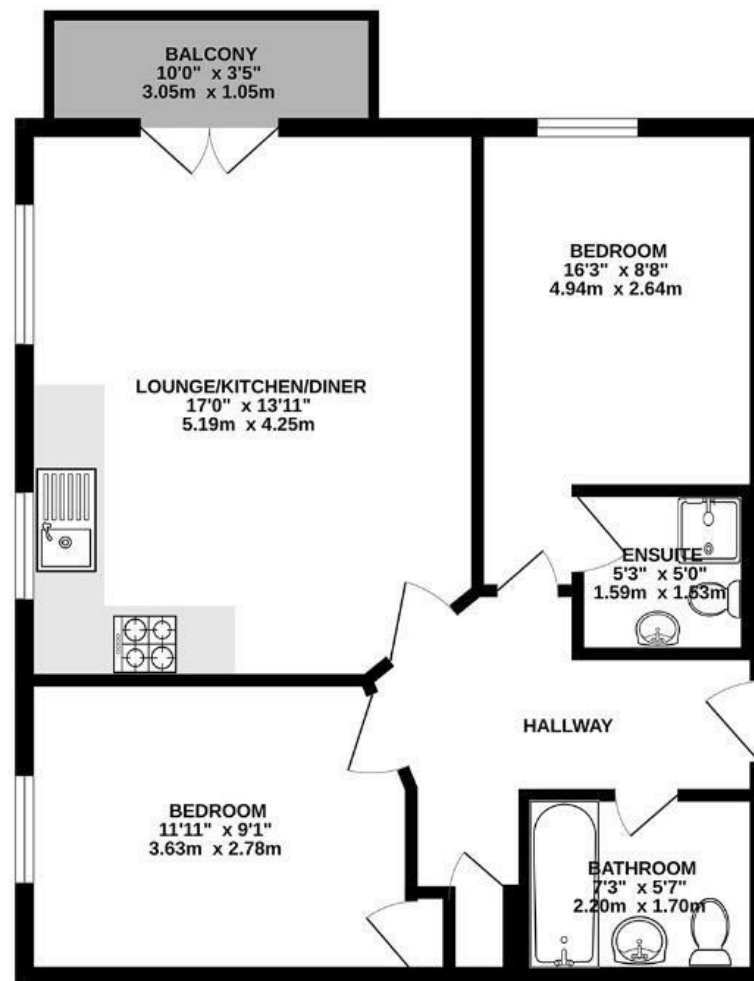


Honeysuckle Road

EMERSONS GREEN

APPROXIMATE FLOOR AREA
54.8 SQM / 590 SQFT



Illustrations are for reference purposes only, measurements are approximate, not to scale.

Boardwalk

Honeysuckle

EMERSONS GREEN, BRISTOL



£235,000



2 Bedrooms



BS16 7LS



2 Bathrooms

"The flat is quiet, neighbours are quiet and you forget you're living in a block of flat with others. The flat is a 5 minute walk to the Park and Ride which has a commuter bus that takes about 30 minutes into town. It also has excellent connections to Bath/Bristol/Motorway."

