



Hotham Road, SW19
£599,000

Dexters



Hotham Road, SW19

A two double bedroom, ground floor purpose built maisonette. The property is presented in superb condition, with a large, south west facing private garden and a share of freehold.

The property has a large reception room to the front, complete with a log burner and hand built alcove units. The double bedroom, off the hallway is a decent size, complete with a built in wardrobe and views over the garden. The second bedroom is an ideal study/ guest bedroom.

To the rear there is an expansive kitchen/breakfast room, with enough worktop space for any keen chef! The bathroom and separate w/c are located at the back of the maisonette, with a door to the private west facing landscaped garden.

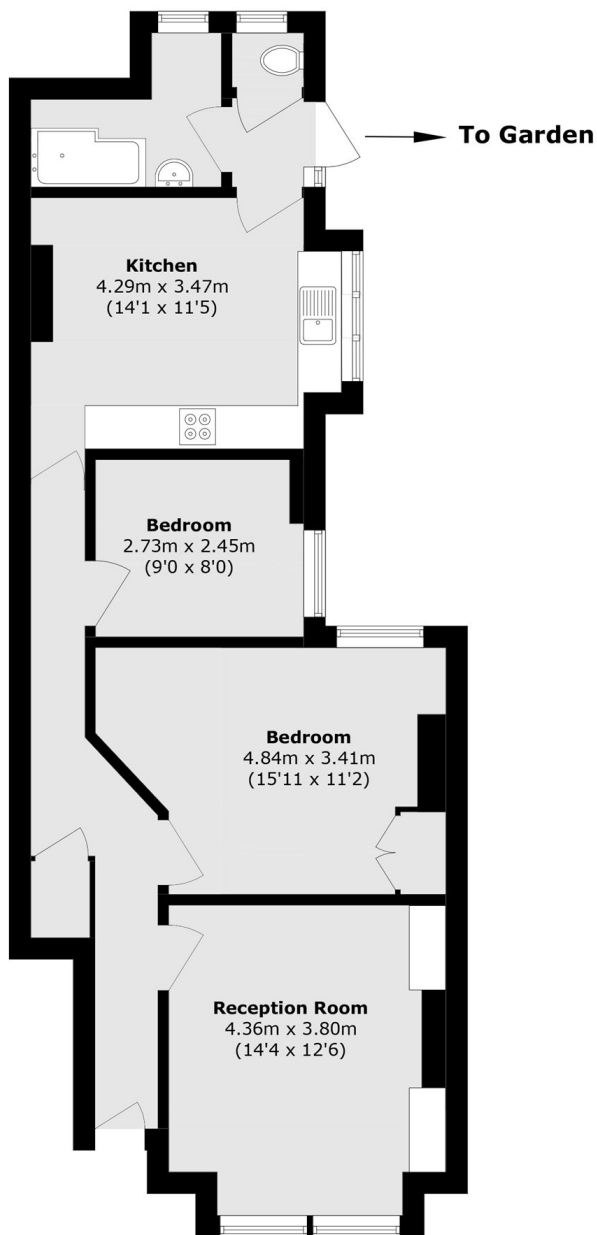
Hotham Road is a popular and quiet road between Wimbledon and Colliers Wood. Both Wandle Park and Haydons Recreation Grounds are nearby, with Northern Line and Thames Link just a stone's throw away.

Features

- Two Double Bedrooms
- South West Facing Garden
- Quiet Tree Lined Street
- Share Of Freehold
- Victorian Maisonette
- Near Northern Line



Hotham Road, London, SW19



Total area (approx.): 71.1 sq. m (765.3 sq. ft)