



## South Grove, N6

£808 Per week

A characterful two double bedroom apartment on the first floor of a 1930s mansion development with a bright dual-aspect lounge, separate kitchen, off-street parking and a communal garden.

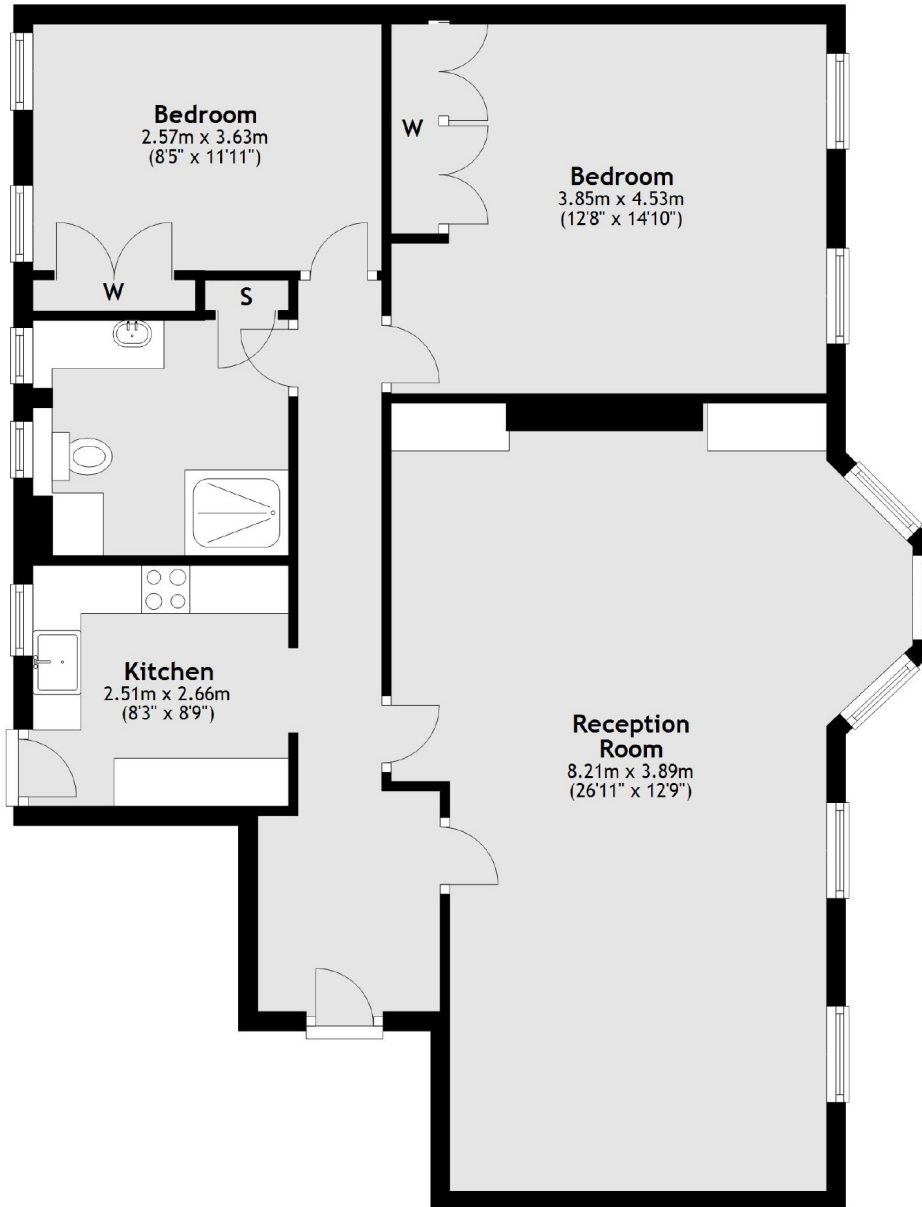
South Grove House is perfectly placed towards the end of South Grove and therefore convenient for Hampstead Heath, the village amenities and the cultural Highgate Society.

### Features

- First Floor
- Double Reception
- Lift Access
- Communal Garden
- Village Location
- Bright

# South Grove, London, N6

## First Floor



Total area: approx. 89.1 sq. metres (958.6 sq. feet)