

Frank Harris & Co.



Bloomsbury, WC1H

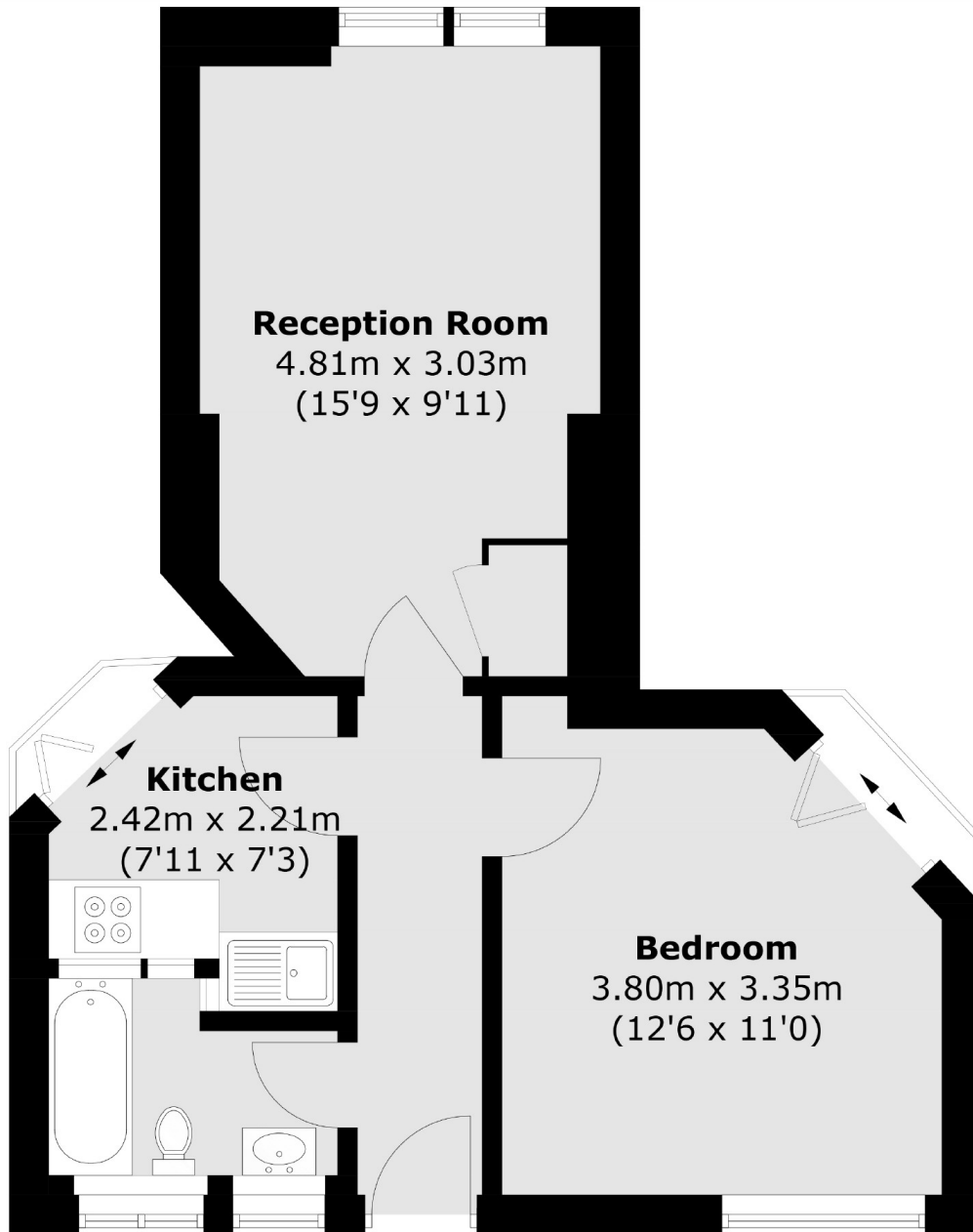
£2,500 Per week

Well presented one double bedroom flat situated in the heart of Bloomsbury. The property comprises; double bedroom, bright living area, bathroom and separate kitchen.

The property is well placed for ease of access to the University of London, SOAS, Birkbeck and LSE. The property is walking distance to Russell Square & King's Cross underground stations.

- One Bedroom • Third Floor • Wooden floors throughout •
- Furnished • Separate kitchen • Great Location •

Frank Harris & Co.



Total area (approx.): 38.8 sq. m (417.6 sq. ft)

Frank Harris & Co. Bloomsbury and Kings Cross
81 Marchmont Street, London,
WC1N 1AL
020 7387 0077
bloomsburylettings@frankharris.co.uk

Energy Rating: D. We aim to make our particulars both accurate and reliable. However they are not guaranteed; nor do they form part of an offer or contract. If you require clarification on any points then please contact us, especially if you're traveling some distance to view. Please note that appliances and heating systems have not been tested and therefore no warranties can be given as to their good working order.

