

Harvard Road, Isleworth, TW7 4PA

Guide Price £295,000



1 Bedroom



1 Bathroom



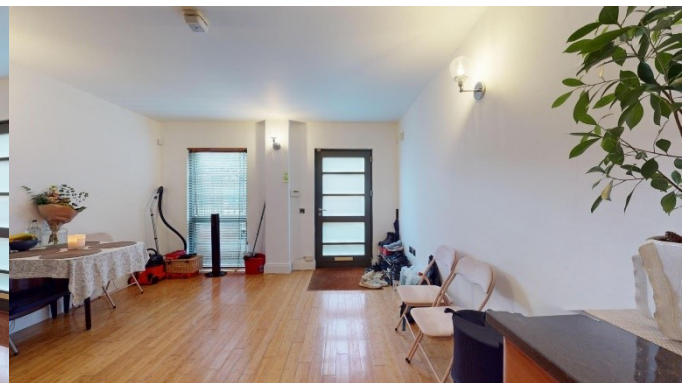
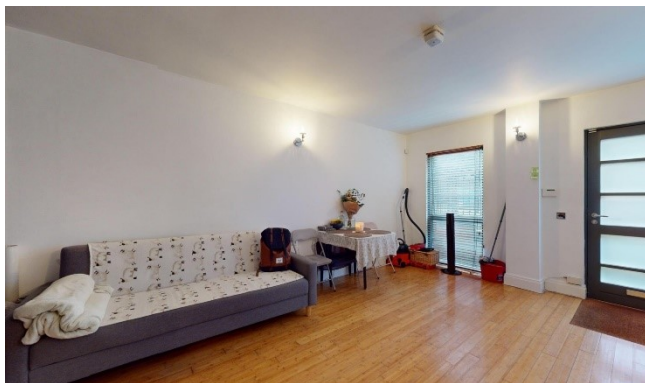
1 Reception Room

Property Description

- 1 Bedroom
 - Master Bedroom with Ensuite Bathroom
 - Immaculate Presentation
 - Wooden Flooring throughout
 - Walking distance to Isleworth Train Station
 - Walking Distance to Osterley Tube Station
 - Close to local amenities
- Est. Ground Rent: £150pa, Service Charge: £1,200pa, Lease: 965+ Years remaining

Harvard Road, Isleworth, TW7 4PA

Guide Price £295,000

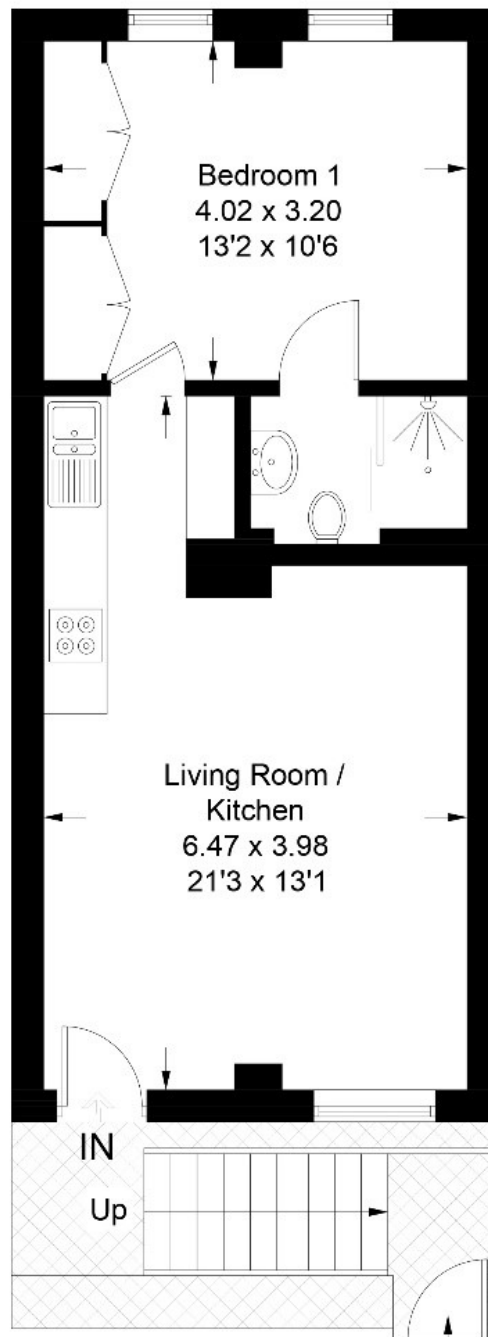


Harvard Road, Isleworth, TW7 4PA

Guide Price £295,000

Harvard Road

Approximate Gross Internal Area = 39.7 sq m / 427 sq ft

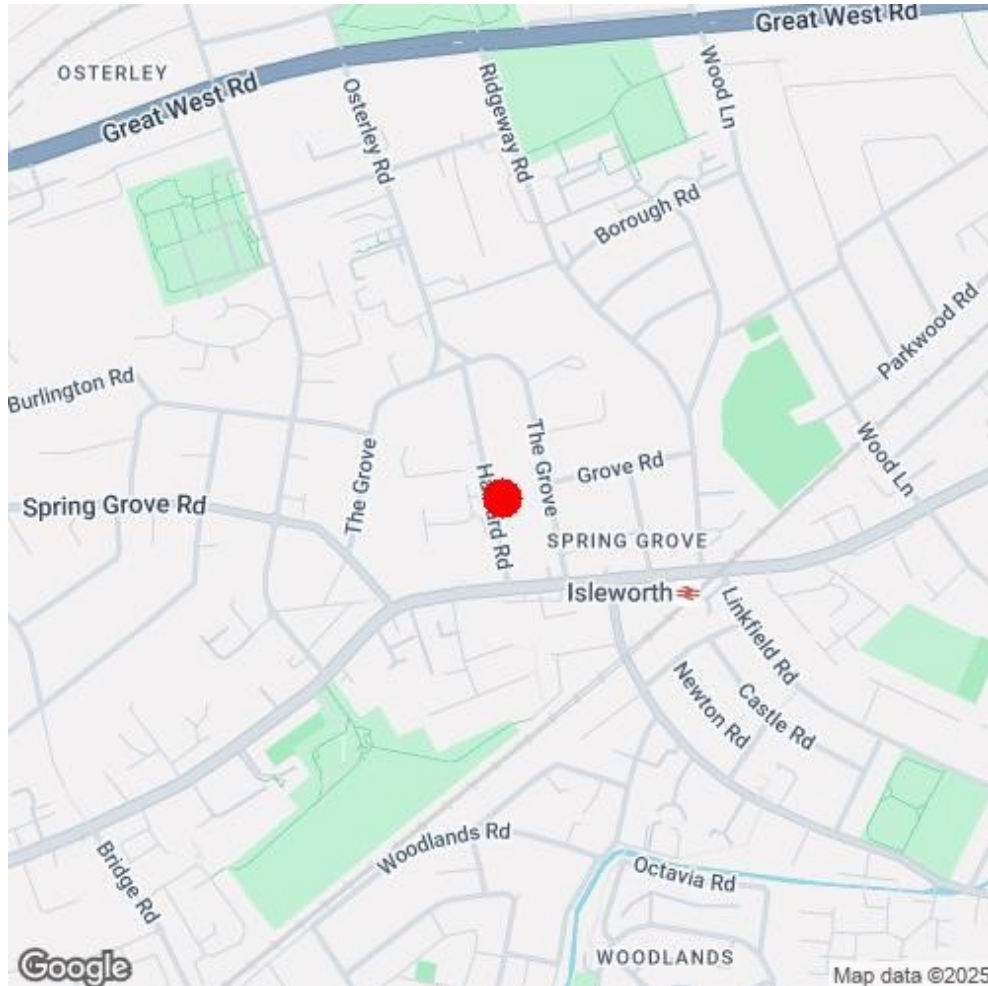



Ground Floor

Illustration for identification purposes only,
measurements are approximate, not to scale. (ID756743)

Harvard Road, Isleworth, TW7 4PA

Guide Price £295,000



Energy Efficiency Rating		
	Current	Potential
Very energy efficient - lower running costs		
(92 Plus) A		
(81-91) B		
(69-80) C	77	81
(55-68) D		
(39-54) E		
(21-38) F		
(1-20) G		
Not energy efficient - higher running costs		
England & Wales	EU Directive 2002/91/EC	



Scan this QR code to view more details on this property on our website, including 360 video.