

## 1 Viaduct Gardens London

A large one bedroom apartment set within the sought after Embassy Gardens development. Featuring underfloor heating and comfort cooling, this luxury apartment offers sleek design and high specification finish.

Residents can take advantage of the exciting communal amenities such as the gym, spa, private cinema, meeting rooms and lounges. The development is located close to zone one transport links including Vauxhall station.

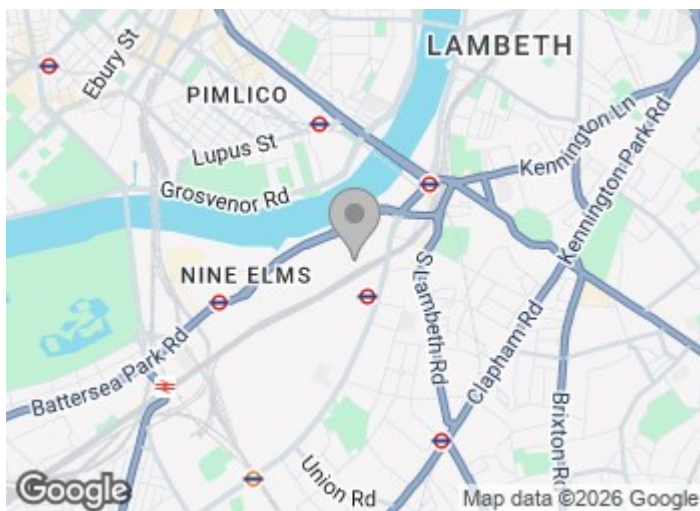
\*Photos have been digitally staged for marketing purposes\*

**£775 Per Week**

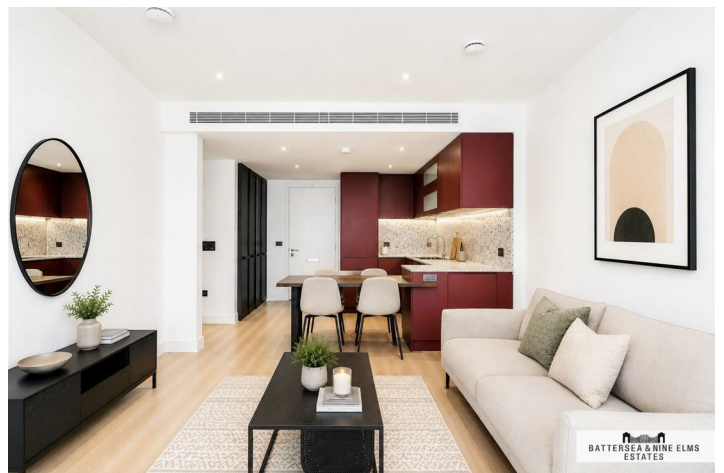
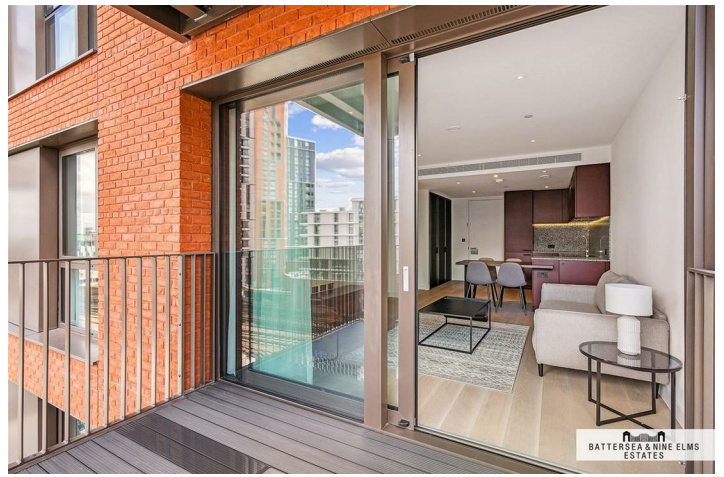
# 1 Viaduct Gardens London



- One bedroom
- Indoor swimming pool
- Excellent transport links
- Residents cinema
- One bathroom
- Sky pool
- Comfort cooling
- 24 hour concierge
- Residents gym
- Underground heating



[Directions](#)



## Embassy Gardens, SW11

Approximate Gross Internal Area

50.5 sq m / 543 sq ft



ILLUSTRATION FOR IDENTIFICATION PURPOSES ONLY  
 ALL MEASUREMENTS AND AREA FIGURES SUPPLIED BY OTHERS, ACCURACY IS NOT GUARANTEED.  
 THIS PLAN MUST NOT BE REPRODUCED BY ANY OTHER PERSON WITHOUT PERMISSION

These particulars, whilst believed to be accurate are set out as a general outline only for guidance and do not constitute any part of an offer or contract. Intending purchasers should not rely on them as statements of representation of fact, but must satisfy themselves by inspection or otherwise as to their accuracy. No person in this firm's employment has the authority to make or give any representation or warranty in respect of the property.

