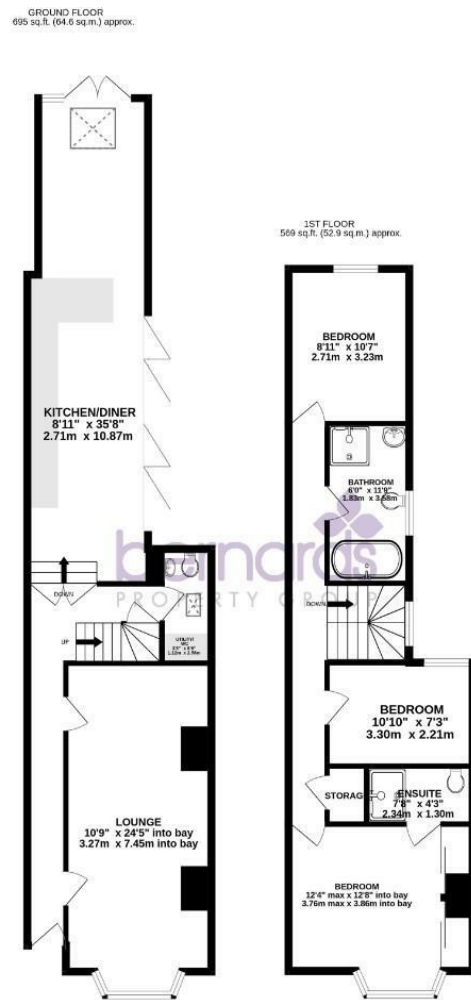


FOR SALE

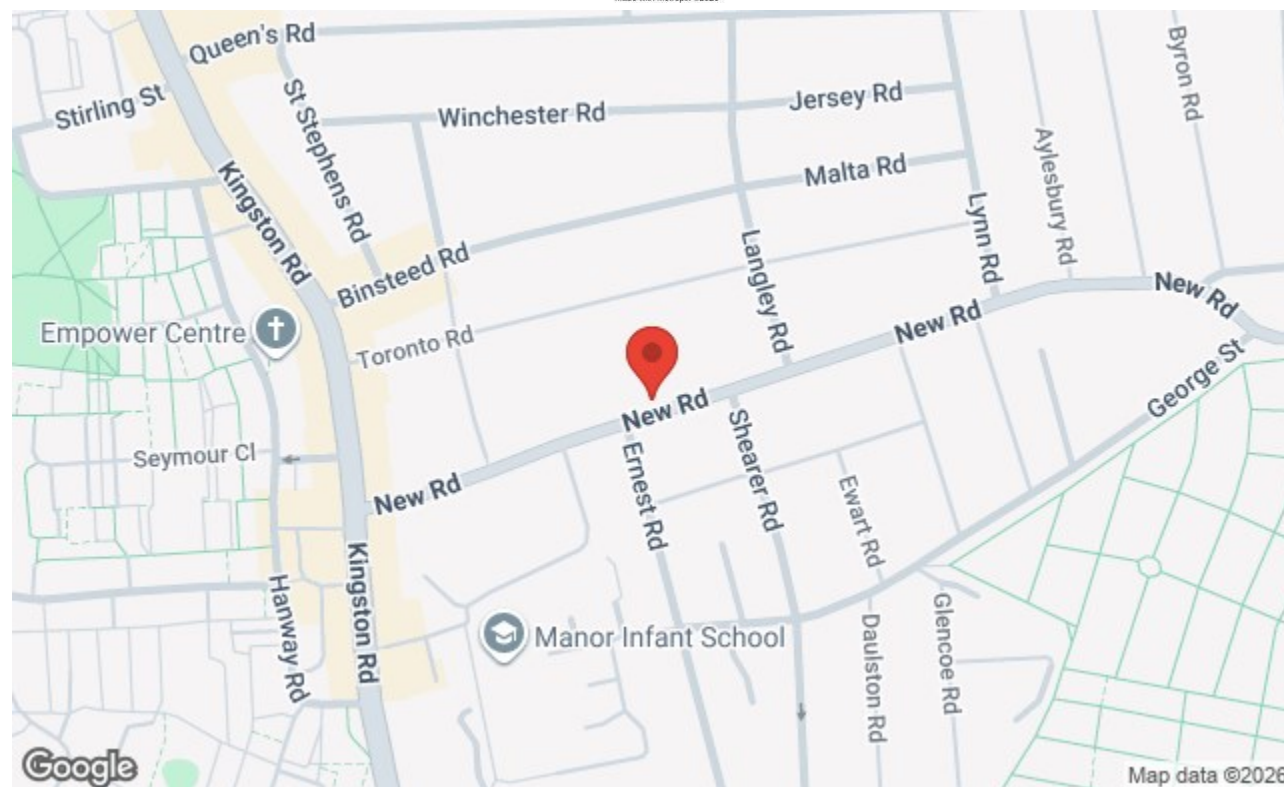
Offers In Excess Of £300,000

New Road, Portsmouth PO2 7QN

bernards THE ESTATE AGENTS



TOTAL FLOOR AREA: 1264 sq.ft. (117.4 sq.m.) approx.  
 Whilst every attempt has been made to ensure the accuracy of the floorplan contained here, measurements of doors, windows, rooms and any other items are approximate and no responsibility is taken for any error, omission or mis-statement. This plan is for illustrative purposes only and should be used as such by any prospective purchaser. The services, systems and appliances shown have not been tested and no guarantee as to their operability or efficiency can be given.  
 Made with Metropix ©2026



3 2 1

### HIGHLIGHTS

- ◆ MID TERRACED HOUSE, FITTED SHUTTERS THROUGHOUT
- ◆ DOUBLE BAY & FORECOURT
- ◆ STUNNING FAMILY HOME
- ◆ SPACIOUS LOUNGE
- ◆ BEAUTIFULLY MODERN FITTED KITCHEN/DINER
- ◆ LARGE GARDEN
- ◆ THREE BEDROOMS
- ◆ EN-SUITE TO MASTER WITH FITTED WARDROBES
- ◆ FOUR-PIECE FAMILY BATHROOM
- ◆ CALL TO ARRANGE INTERNAL VIEWING

This stunning double bay and forecourt mid-terraced home on New Road offers generous living space, stylish interiors, and an excellent layout - making it a fantastic family home ready to move straight into.

The ground floor boasts a spacious lounge to the front, enhanced by a large bay window creating a bright and welcoming living space. To the rear, the property opens up into a beautifully modern fitted kitchen/diner stretching the full depth of the home - ideal for entertaining and everyday family life, with direct access out to the impressive rear garden. A useful utility area and ground floor WC add

further practicality.

Upstairs, the property offers three well-proportioned bedrooms, including a generous principal bedroom benefiting from its own ensuite shower room. The remaining bedrooms are served by a stylish four-piece family bathroom, providing both bath and separate shower.

Externally, the home features a classic double bay and forecourt frontage, while to the rear is a large enclosed garden - perfect for outdoor dining, children, or further landscaping potential.

129 London Road, Portsmouth, Hampshire, PO2 9AA  
 t: 02392 728090



Call today to arrange a viewing  
 02392 728090  
 www.bernardsestates.co.uk



