

## Waterway Court, Birmingham, B14 4HW

Offers In Region Of £130,000

2 1 1



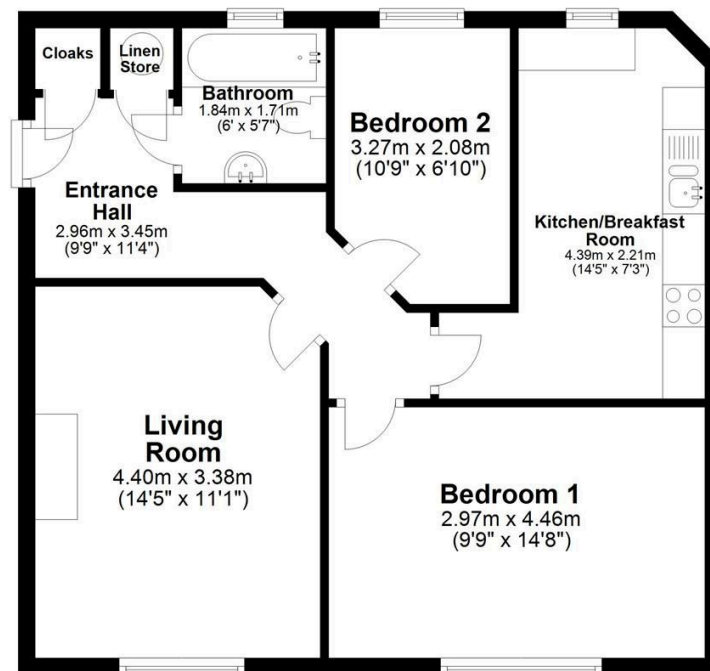
A well presented newly refurbished two bedroom first floor apartment, situated on the popular and sought-after Yardley Wood Road, at the border of Solihull Lodge. Offered for sale with NO UPWARD CHAIN.

## Key Features

- Two Bedrooms
- Well Presented
- No Upward Chain
- Bathroom
- Leasehold Property
- 1st Floor Apartment
- Recently Refurbished
- Perfect for Investors and First Time Buyers
- One Allocated Parking Space
- Ideal Location

### First Floor Apartment

Approx. 59.1 sq. metres (636.4 sq. feet)



Total area: approx. 59.1 sq. metres (636.4 sq. feet)

Floor plans are intended to give a general indication of the proposed layout. Details and measurements within are not intended to form part any contract.  
Plan produced using PlanUp.