



Ridley Close , Holbury SO45 2NR

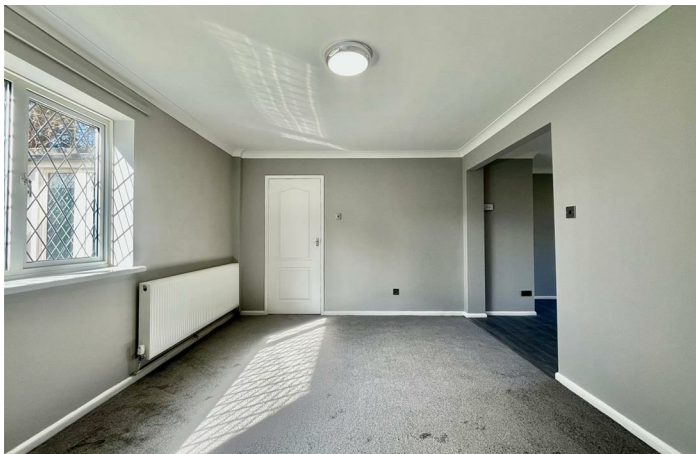
- ***GUIDE PRICE BETWEEN £299,000 to £315,00***
 - SEMI-DETACHED HOUSE
 - RECENTLY RENOVATED
 - GARAGE
 - WALKING DISTANCE TO SHOPS
- SPACIOUS GARDEN
- THREE BEDROOMS
- FAMILY BATHROOM
- SIZABLE FRONT AND REAR GARDENS
- GREAT OPPORTUNITY

Guide price £299,000 Freehold





Location



Porch

This spacious and practical porch welcomes you in to the property and leaves plenty of space to leave shoes and coats.

Lounge

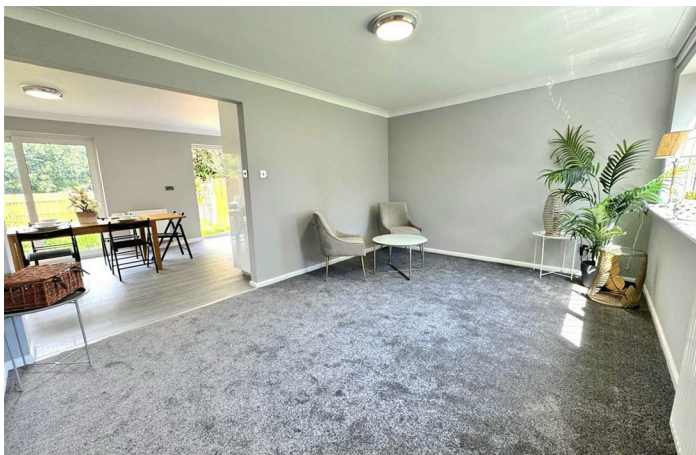
22'4 x 15'1

This spacious lounge divides in 2-3 areas for different purposes. Large windows and glass doors gives plenty of light through the room. White painted walls, and wood effect laminate flooring.

Kitchen

11'6 x 8'4

Fitted kitchen with loads of cupboards to store everything you need in a family Kitchen. Tiled walls, linoleum flooring and a back door leading out to the garden. Needs modernisation.



Master bedroom

The master bedroom is a good size double room with light painted walls, carpet, radiator, and windows facing the woodlands across the road.

Second bedroom

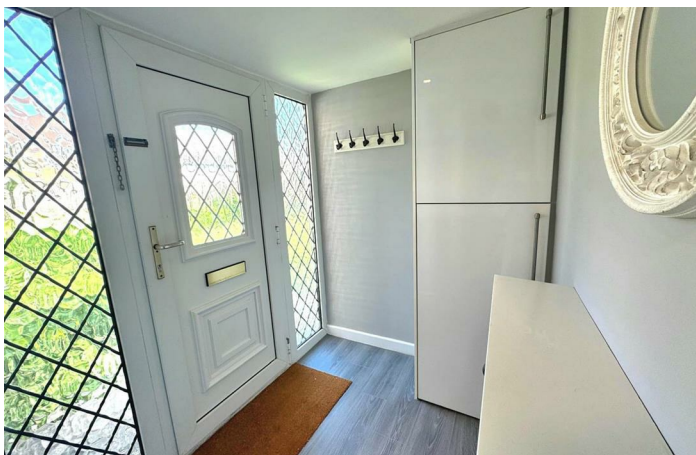
11'9 x 10'2

The second bedroom is also a good size double room with light painted walls, carpet, built in wardrobe, radiator, and windows facing the front garden.

Third bedroom

8'4 x 7'3

The third bedroom is a single room that would fit a single bed, a desk and some furnitures. Walls are painted in a light colour, gray carpets and a window facing the front garden.



Family bathroom

7'8 x 4'6

The family bathroom consists of a bathtub, washbasin, a toilet and bathroom furnitures. It's bright and airy with 2 windows that provides plenty of natural light. Tiled walls and linoleum flooring.

Garden

This semi-detached house comes with a generous sized wraparound garden with plenty of space and sun both at the front and at the back. It's all fenced in to be dog and child friendly and consists of lawn , patio, summerhouse, trees, shrubs and flowers.

Garage

Single garage in a chain + parking in front.

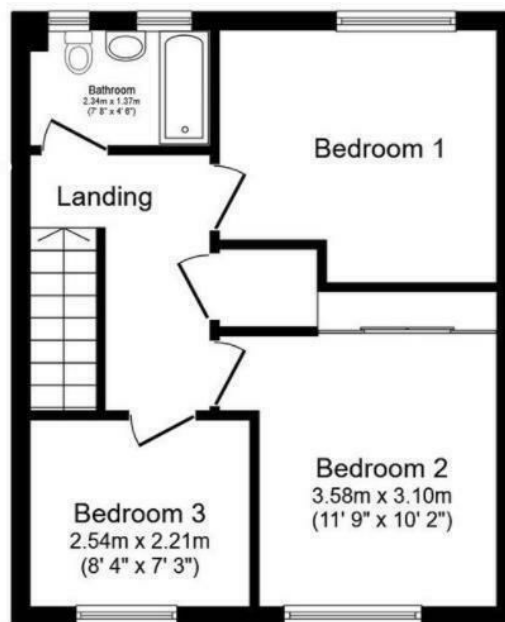


Local Authority **NFDC**
Council Tax Band **B**
EPC Rating **D**



Ground Floor

Floor area 40.0 m² (430 sq.ft.)



First Floor

Floor area 37.5 m² (403 sq.ft.)

TOTAL: 77.5 m² (834 sq.ft.)

This floor plan is for illustrative purposes only. It is not drawn to scale. Any measurements, floor areas (including any total floor area), openings and orientations are approximate. No details are guaranteed, they cannot be relied upon for any purpose and do not form any part of any agreement. No liability is taken for any error, omission or misstatement. A party must rely upon its own inspection(s). Powered by www.Propertybox.io

Citrine Estates Office

7 High Street, Hythe, Southampton,
SO45 6AG

Contact

023 81980 023
christina@citrine-estates.co.uk
www.citrine-estates.co.uk

Agents Note: Whilst every care has been taken to prepare these particulars, they are for guidance purposes only. All measurements are approximate and for general guidance purposes only and whilst every care has been taken to ensure accuracy, they should not be relied upon and potential buyers/tenants are advised to recheck the measurements.