

for sale

£750,000



## Hemingway Close Newport Pagnell MK16 8QP

Four-Bedroom Detached Family Home with NO CHAIN – Situated in the highly sought-after area of Newport Pagnell, this impressive four-bedroom detached home offers an exceptional opportunity for growing families and discerning commuters alike.



# Hemingway Close Newport Pagnell MK16 8QP

## Entrance Hall

Front door. Cupboard. Radiator. Stairs leading to first floor.

## Cloakroom

W/C. Wash hand basin. Radiator.

## Sitting Room

Bow window to the front. Door to dining room. Radiator.

## Dining Room

Radiator. Opening to kitchen. Doors to conservatory.

## Conservatory

UPVC/Brick built construction. Radiator. Door leading out to rear garden.

## Kitchen

Mixture of wall and base level units. Sink with drainer. Windows to rear aspect. Oven with Gas hob and extractor over. Tiled flooring. Radiator. Fitted dishwasher and fridge, as well as access to the under stairs cupboard and door leading to the utility.

## Utility

Base level units. Sink with drainer. Window to rear aspect. Plumbing for washing machine. Space for appliances. Door to

rear garden. Radiator. Door to Games Room/Annex

## Games Room/Annex

Vendors have converted the garage into a games room. Fantastic space for either: Games Room/Annex or another reception room. Radiator.

## First Floor Landing

One built in cupboard. Access to all rooms and family bathroom. Radiator.

## Bedroom One

Two built in wardrobes and chest of drawers. Window to rear aspect. Door to Ensuite. Radiator.

## Ensuite

Bath with shower connection. Full height tiles. Tiled flooring. Frosted glass window. W/C. Sink. Heated towel rail. One eye level unit.

## Bedroom Two

Built in wardrobe. Window to front aspect. Radiator.

## Bedroom Three

Window to front aspect. Radiator.



## **Bedroom Four**

Window to front aspect. Radiator.

## **Bathroom**

Corner shower unit. W/C. Sink with Vanity.

## **Rear Garden**

Enclosed rear garden with timber fence. Mainly laid to lawn. Two tiers. Shrub borders. Mature trees. Patio area.

## **Front**

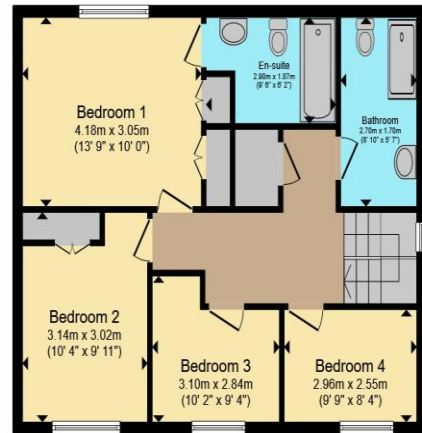
Parking for multiple vehicles.







**Ground Floor**



**First Floor**

Total floor area 172.6 m<sup>2</sup> (1,858 sq.ft.) approx

This floor plan is for illustrative purposes only. It is not drawn to scale. Any measurements, floor areas (including any total floor area), openings and orientation are approximate. No details are guaranteed, they cannot be relied upon for any purpose and they do not form part of any agreement. No liability is taken for any error, omission or misstatement. A party must rely upon its own inspection(s). Powered by [www.propertybox.io](http://www.propertybox.io)



To view this property please contact Connells on

**T 01908 610 805**  
**E [newportpagnell@connells.co.uk](mailto:newportpagnell@connells.co.uk)**

91 High Street Newport Pagnell  
 MILTON KEYNES MK16 8EN

Property Ref: NPA306708 - 0004

Tenure: Freehold EPC Rating: C

Council Tax Band: E

**view this property online**  
**[connells.co.uk/Property/NPA306708](http://connells.co.uk/Property/NPA306708)**



1. MONEY LAUNDERING REGULATIONS Intending purchasers will be asked to produce identification documentation at a later stage and we would ask for your co-operation in order that there will be no delay in agreeing the sale. 2. These particulars do not constitute part or all of an offer or contract. 3. The measurements indicated are supplied for guidance only and as such must be considered incorrect. Potential buyers are advised to recheck measurements before committing to any expense. 4. We have not tested any apparatus, equipment, fixtures, fittings or services and it is in the buyers interest to check the working condition of any appliances.

Connells Residential is registered in England and Wales under company number 1489613, Registered Office is Cumbria House, 16-20 Hockliffe Street, Leighton Buzzard, Bedfordshire, LU7 1GN. VAT Registration Number is 500 2481 05.

see all our properties at [www.connells.co.uk](http://www.connells.co.uk) | [www.rightmove.co.uk](http://www.rightmove.co.uk) | [www.zoopla.co.uk](http://www.zoopla.co.uk)