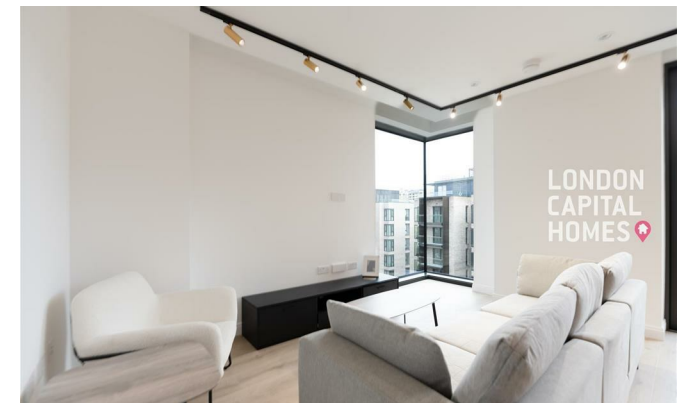


**LONDON
VICTORIA
GROUPS** 



Siena House, 9 Bollinder Place

, London EC1V 2AU

- Two-bedroom, two-bathroom apartment
 - 24-hour concierge service
- Landscaped communal gardens and courtyards
 - Private screening room
- EPC-B
- Open-plan living and dining area
- Residents' gym and fitness suite
- Residents' lounge and co-working spaces
- Ideally positioned close to Old Street, Angel, and Farringdon
- CTB-F

£4,333 Per Month



Local Authority **Islington**
Council Tax Band **F**
EPC Rating **B**



Views over landscaped courtyard



London Office Office

Spaces Victoria, 25 Wilton Road, Pimlico,
London, SW1V 1LW

Contact

020 3084 3094
XL@londonvictoriagroups.co.uk
www.londonvictoriagroups.co.uk

Agents Note: Whilst every care has been taken to prepare these particulars, they are for guidance purposes only. All measurements are approximate and for general guidance purposes only and whilst every care has been taken to ensure accuracy, they should not be relied upon and potential buyers/tenants are advised to recheck the measurements.

