



Chester Road, Hounslow, TW4 6HX

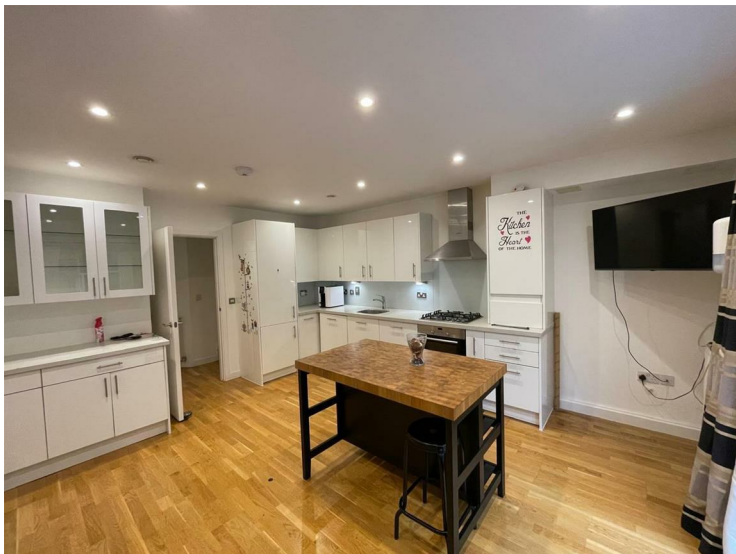
£2,250 PCM

A modern three bedroom terraced family home located in a popular residential area, with convenient access to local shops, schools, and excellent transport links. The accommodation comprises an open-plan reception room with a fully fitted kitchen/diner and a cloakroom WC on the ground floor. The first floor offers a lounge (can be used as a bedroom), one bedroom and a contemporary shower room.

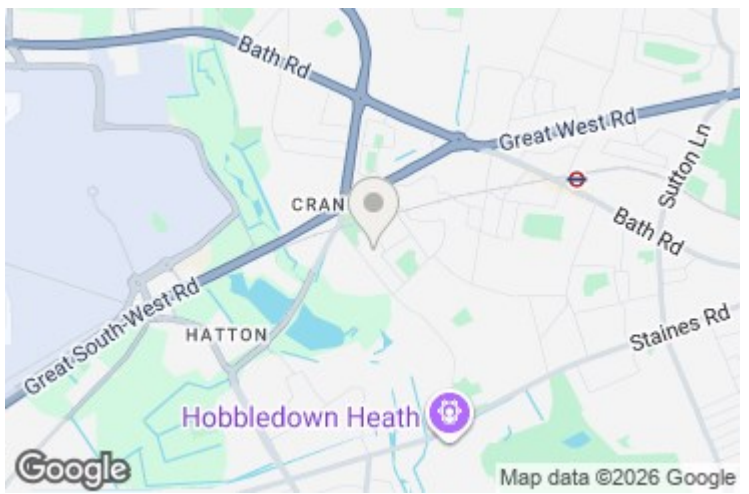
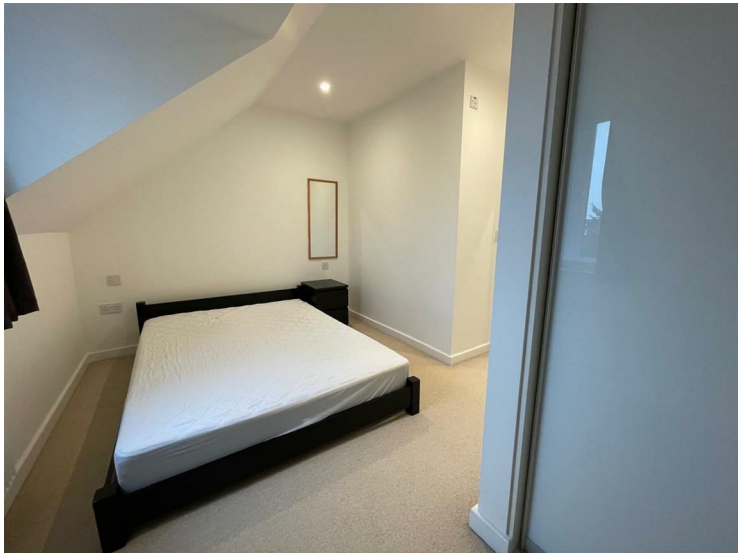
On the second floor there are two further bedrooms, including a principal bedroom with an en-suite shower room, as well as a bathroom. Externally, the property benefits from a private rear garden and off-street parking. The property is offered on a furnished basis and is available immediately.

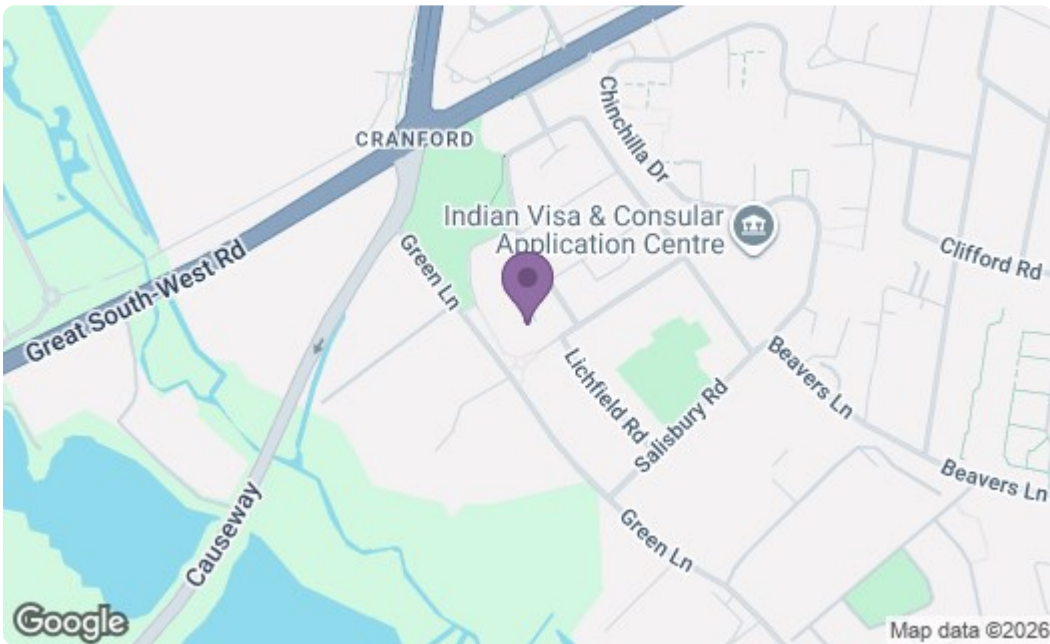
A partner of
The Guild Of Professional Estate Agents
with a network of over 700 independent estate agents



Associated Office: 121 Park Lane, Mayfair, London W1K 7AG t 020 7318 7075









Energy Efficiency Rating		Current	Potential
Very energy efficient - lower running costs			
(92 plus) A			
(81-91) B			
(69-80) C		72	72
(55-68) D			
(39-54) E			
(21-38) F			
(1-20) G			
Not energy efficient - higher running costs			
England & Wales		EU Directive 2002/91/EC 	
Environmental Impact (CO ₂) Rating		Current	Potential
Very environmentally friendly - lower CO ₂ emissions			
(92 plus) A			
(81-91) B			
(69-80) C			
(55-68) D			
(39-54) E			
(21-38) F			
(1-20) G			
Not environmentally friendly - higher CO ₂ emissions			
England & Wales		EU Directive 2002/91/EC 	

A partner of
The Guild Of Professional Estate Agents
 with a network of over 700 independent estate agents

Associated Office: 121 Park Lane, Mayfair, London W1K 7AG t 020 7318 7075