



## Woodlands Pikes Hill Lyndhurst

£1,295 PCM

Beautifully presented 1 bedroom second floor apartment, offering a blend of modern living and rural charm. This property is located in the beautiful New Forest, with easy access to the A31, A35 and M27. Holding deposit: £300 Security deposit: £1494 Council tax band C. To rent this property you must be able to prove an annual income of £39,000.



• Quiet Location • Air source heat pump • EV Charger • Brand New • Parking • No Pets

Entering through the communal front door, a shared hallway leads to stairs rising to the second floor where the entrance to Apartment 5 is located.

Inside, a central hallway connects to the spacious sitting room, accessed via double doors, and further opens onto a private balcony through bi-folding doors that frame spectacular rural views.

The generous dining room provides a versatile additional reception space and flows seamlessly into a stylish kitchen, illuminated by a rear dormer window. The kitchen is finished with oak-effect flooring and compact marble laminate worktops and features a range of base units. Integrated appliances include an induction hob, oven, fridge/freezer, dishwasher, and washing machine.

The 'Jack & Jill' bathroom comprising a bath with shower over, basin and WC is situated adjacent to the generous double bedroom with front and side aspects. The property also benefits from semi-boarded eaves and loft storage with ladder.

Outside, there is a delightful communal garden with apple trees and a bench to enjoy.

#### ADDITIONAL INFORMATION

Council Tax Band: C

Furnishing Type: Unfurnished

Security Deposit: £1,494

Available From: 24th June 2026

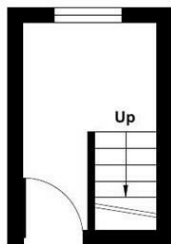


# 5 Woodlands, Pikes Hill, Lyndhurst, SO43

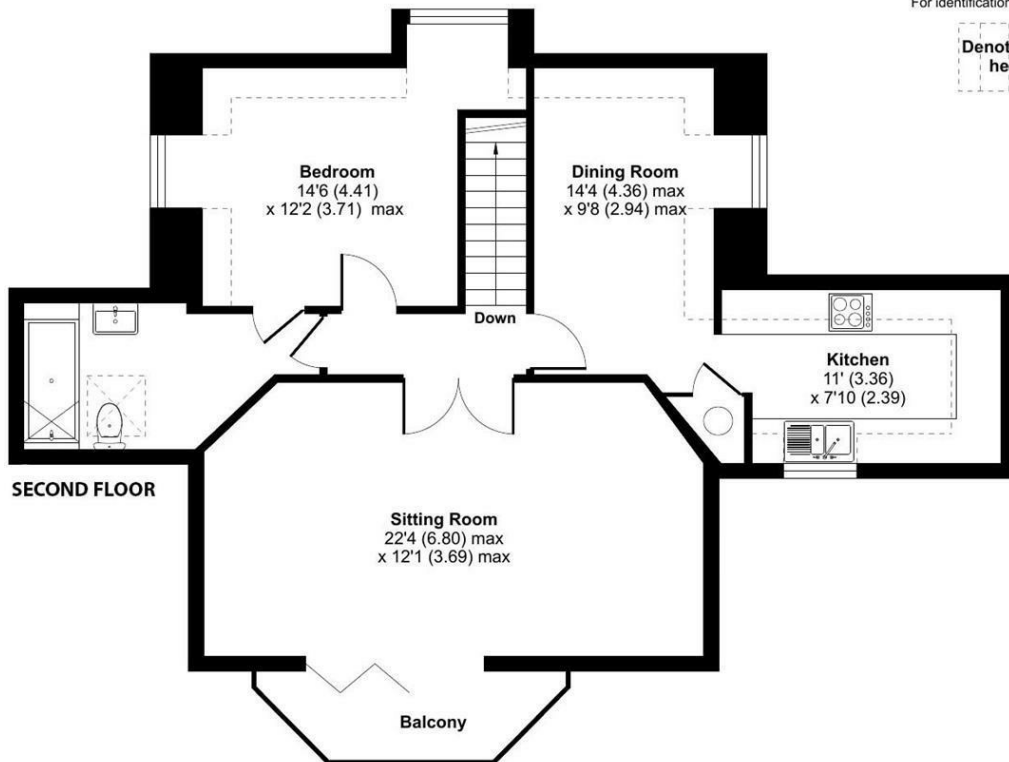
Approximate Area = 747 sq ft / 69.3 sq m  
 Limited Use Area(s) = 75 sq ft / 6.9 sq m  
 Total = 822 sq ft / 76.2 sq m

For identification only - Not to scale

Denotes restricted head height



FIRST FLOOR



SECOND FLOOR

Floor plan produced in accordance with RICS Property Measurement 2nd Edition, Incorporating International Property Measurement Standards (IPMS2 Residential). © ncthecom 2025. Produced for Spencers of the New Forest Ltd. REF: 1331448



## Energy Efficiency Rating

	Current	Potential
Very energy efficient - lower running costs		
(92 plus) <b>A</b>		
(81-91) <b>B</b>	<b>86</b>	<b>86</b>
(69-80) <b>C</b>		
(55-68) <b>D</b>		
(39-54) <b>E</b>		
(21-38) <b>F</b>		
(1-20) <b>G</b>		
Not energy efficient - higher running costs		
<b>England &amp; Wales</b>	EU Directive 2002/91/EC	

Agents Note: Whilst every care has been taken to prepare these particulars, they are for guidance purposes only. All measurements are approximate and are for general guidance purposes only and whilst every care has been taken to ensure their accuracy, they should not be relied upon and potential buyers/tenants are advised to recheck the measurements.



# SPENCERS

LETTINGS

## ABOUT US

As the leading independent letting agency in the New Forest and surrounding areas, Spencers offers tenants a friendly, reliable and highly knowledgeable service. With offices across the region, including Lymington, Highcliffe, Brockenhurst, Burley, Ringwood, and Romsey, our local teams are here to help you find the right home and support you throughout your tenancy.

Our lettings teams live and work within the Forest and its nearby towns. This means you benefit from genuine local insight from nearby schools and transport links to community life and coastal or countryside surroundings.

We work closely with our landlords and manage a wide range of homes across the Forest and surrounding towns. We have memberships with Safe Agent, the Property Ombudsmen, and the Tenancy Deposit Scheme (TDS) ensuring your tenancy is handled professionally, transparently and with your best interests in mind.

Please contact us on the below:

Lymington 01794 331433

Romsey 01794 331433

Wimborne: 01202 842248

[lettings@spencersproperty.co.uk](mailto:lettings@spencersproperty.co.uk)

[www.spencersproperty.com](http://www.spencersproperty.com)

