

11 Reed Place Bloomfield Road

Harpenden, AL5 4DE

A brand new first floor apartment built by reputable developers, Bridgewater Homes. The apartment forms part of this exclusive and superbly appointed development located just north of the town centre in this well regarded residential road.

Guide price £650,000

11 Reed Place Bloomfield Road

Harpenden, AL5 4DE



- Luxury Apartment
- Siemens Appliances
- underfloor heating
- EV Charger
- kitchen cabinets by Porcelanosa
- High quality interior fittings
- Video Phone Entry
- Underground Parking
- Sumptuous bathroom suites
- Lift to all floors

Entrance Hall

Kitchen

14'11" x 7'10" (4.57 x 2.39)

Living /Dining room

14'11" x 13'9" (4.57 x 4.20)

Utility

Bedroom One

14'3" x 10'7" (4.35 x 3.23)

En suite

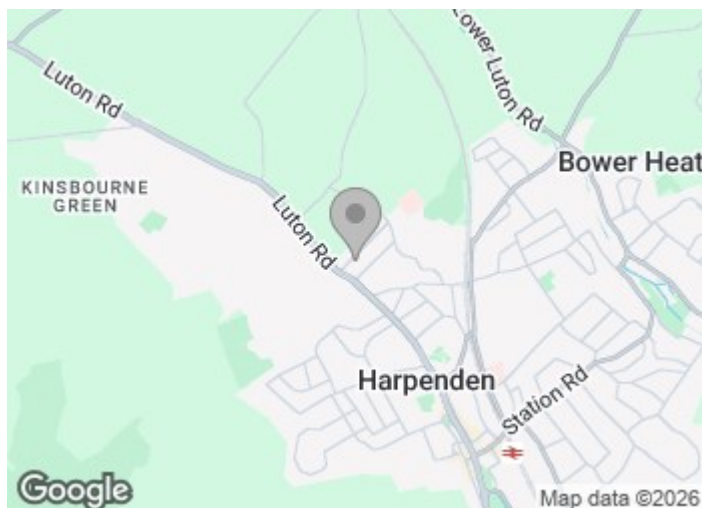
Bedroom Two

14'3" x 11'0" (4.35 x 3.36)

Bedroom Three

13'0" x 7'5" (3.97 x 2.27)

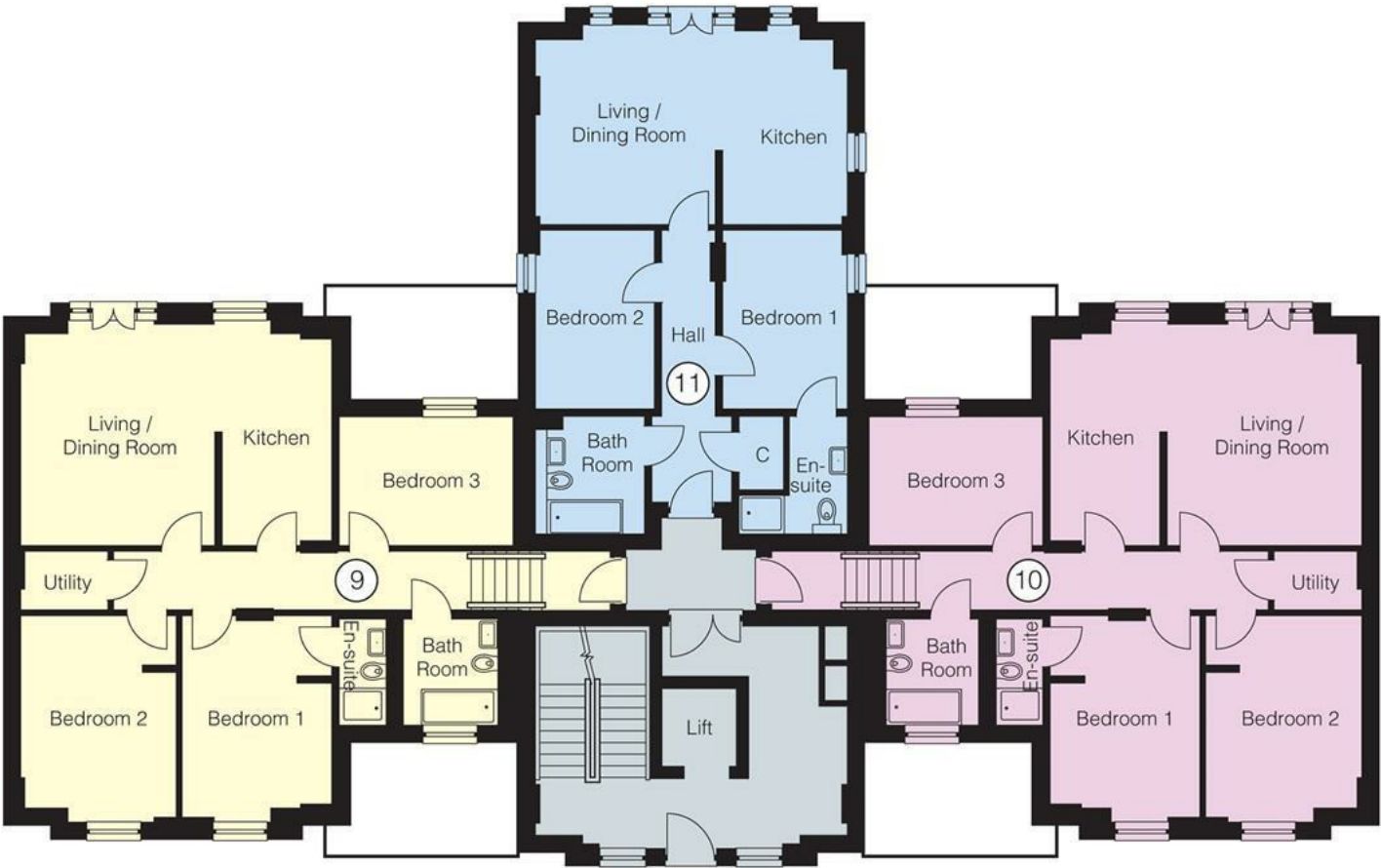
Bathroom



[Directions](#)



Floor Plan



First Floor

These particulars, whilst believed to be accurate are set out as a general outline only for guidance and do not constitute any part of an offer or contract. Intending purchasers should not rely on them as statements of representation of fact, but must satisfy themselves by inspection or otherwise as to their accuracy. No person in this firms employment has the authority to make or give any representation or warranty in respect of the property.

| Energy Efficiency Rating | | | Environmental Impact (CO ₂) Rating | | |
|---|-------------------------|-----------|---|-------------------------|-----------|
| | Current | Potential | | Current | Potential |
| Very energy efficient - lower running costs | | | Very environmentally friendly - lower CO ₂ emissions | | |
| (92 plus) A | | | (92 plus) A | | |
| (81-91) B | | | (81-91) B | | |
| (69-80) C | | | (69-80) C | | |
| (55-68) D | | | (55-68) D | | |
| (39-54) E | | | (39-54) E | | |
| (21-38) F | | | (21-38) F | | |
| (1-20) G | | | (1-20) G | | |
| Not energy efficient - higher running costs | | | Not environmentally friendly - higher CO ₂ emissions | | |
| England & Wales | EU Directive 2002/91/EC | | England & Wales | EU Directive 2002/91/EC | |