



## Dorset Mews, N3

£1,800 Per calendar month

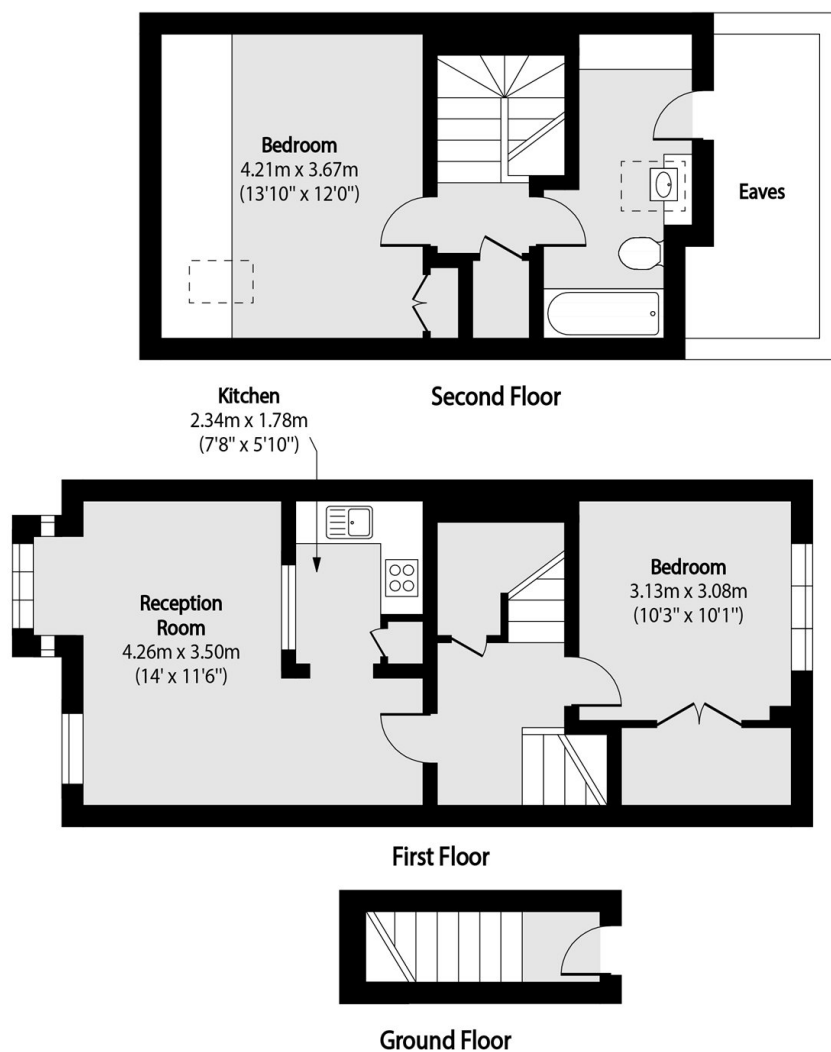
This large two-bedroom split-level maisonette offers well-proportioned accommodation throughout, including fitted wardrobes in both bedrooms, a fully fitted kitchen, and a generous bathroom. The property further benefits from double glazing, good natural light, and an allocated parking space.

Ideally located within walking distance of Finchley Central Underground Station on the London Underground Northern line, the property is well served by local amenities including shops, cafés, and green spaces. The area also provides convenient transport links into Central London, making it suitable for commuters while retaining a residential neighbourhood feel.

### Features

- Two bedrooms
- One bathroom
- One reception
- Split Level
- Close to station
- First Floor
- Allocated Parking

# Dorset Mews, London, N3



Total area (approx): 78.59 sq m (846 sq. ft)  
(Excluding Eaves)