

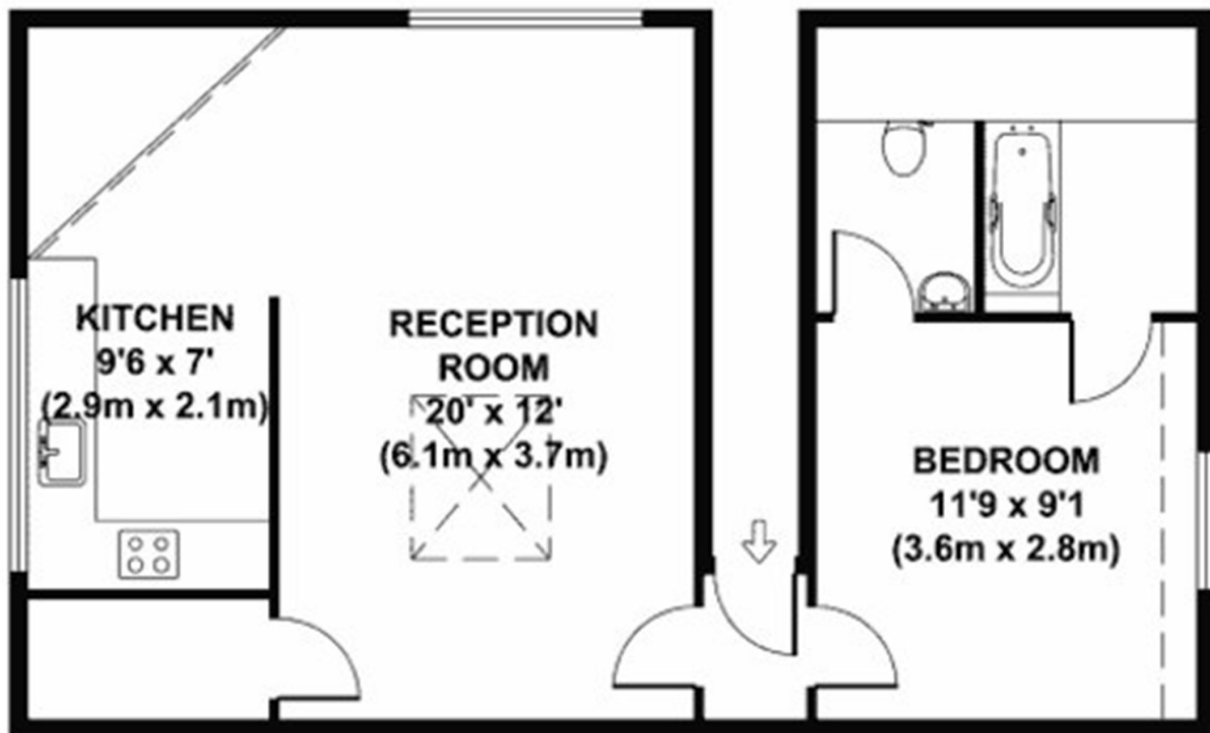


Old Brompton Road, SW5

£550,000



- Large one bedroom
- Dual aspect
- Period charm



**FOURTH FLOOR
GROSS INTERNAL
FLOOR AREA 619 SQ FT
APPROX. GROSS INTERNAL FLOOR AREA 619 SQ FT / 57 SQ M**

Marsh & Parsons Earls Court

246 Old Brompton Road,
Earls Court, London, SW5
020 7590 0800