

# Cromwells



**Washington Road, Worcester Park, KT4 8JJ**  
**£325,000**

NO CHAIN - Ideally located is this 2 bedroom, 1st floor maisonette. The property benefits from a share of freehold, long lease, lounge/diner, 2 bedrooms, bathroom and private garden. Situated superbly for access to Worcester Park mainline station (zone 4), various bus routes, a selection of shops on Worcester Park high street along with schools and nurseries. Internal viewing highly recommended.

No Chain · Share of Freehold / Long Lease ·  
Private Garden · Walking Distance to Worcester Park Station  
EPC: C rated

---

**Front Door -**

**Stairs to 1st Floor Landing -**

Carpeted, landing wood effect flooring, loft access (boiler in loft), door to

**Lounge/Diner - 10' 3" x 12' 0" (3.12m x 3.65m)**

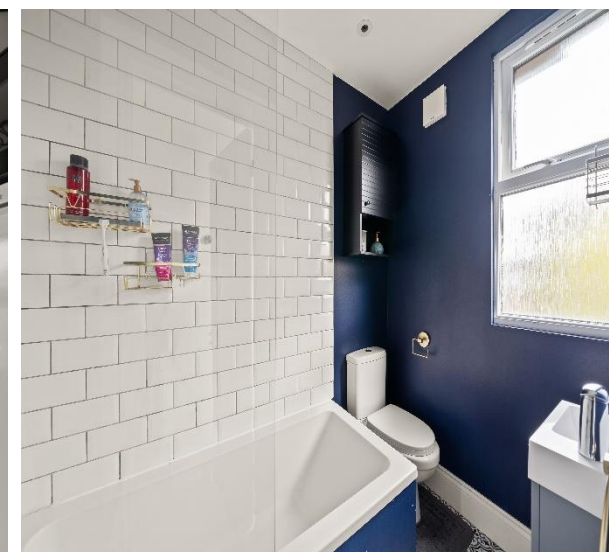
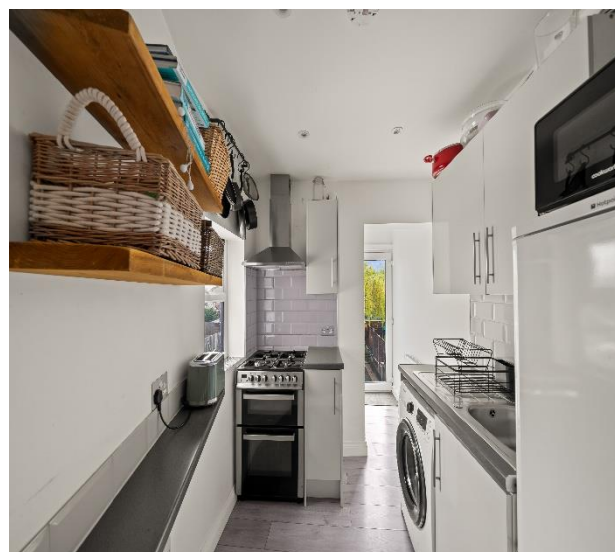
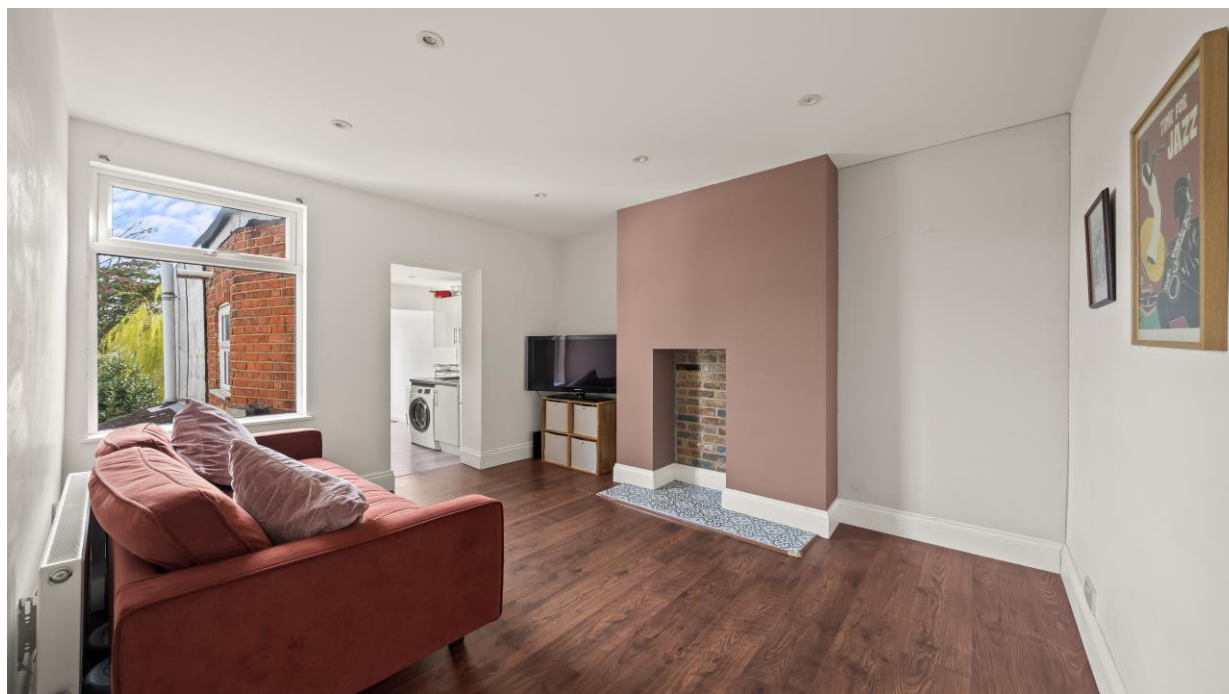
Double glazed window to rear aspect, feature fireplace, double panelled radiator, wood effect flooring, door to

**Kitchen - 7' 9" x 7' 0" (2.36m x 2.13m)**

Double glazed window to side aspect, range of wall mounted units with cupboards and drawer below, work surface, space for oven, fridge/freezer, space and plumbing for washing machine, wood effect flooring, shelving.

**Inner Lobby -**

Double panelled radiator, door to garden, door to



**Bedroom 1 - 13' 7" x 10' 9" (4.14m x 3.27m)**

Dual double glazed windows to front aspect, carpeted, double panelled radiator.

**Bedroom 2 - 6' 3" x 8' 10" (1.90m x 2.69m)**

Double glazed window to rear aspect, wood effect flooring, double panelled radiator.

**Bathroom -**

Double glazed window to rear aspect, white 3 piece suite comprising bath with shower overhead, w/c, wash hand basin with cupboard below, tiled floor, part tiled walls, wall mounted radiator.

**Garden -**

Paved patio area, artificial lawn, gates to further garden area with potential to landscape.



Council Tax - C  
Tenure - Share of Freehold  
Square Foot – approx. 532.9 sq.ft (49.5 sq.mt)

Brabham Court, 45 Central Road  
Worcester Park  
Surrey  
KT4 8EA

020 8337 6603  
admin@cromwellswpark.com

Disclaimer

These particulars are not an offer or contract, nor part of one. You should not rely on statements made by Cromwells in the particulars or by word of mouth or in writing (“information”) as being factually accurate about the property, its condition or value. Neither Cromwells nor any joint agent has authority to make representations about the property, and accordingly any information given is entirely without responsibility on the part of the agents, seller(s) or lessor(s). Photographs show only certain parts of the property as they appeared at the time they were taken. Areas, measurements and distances are given as an approximate only. Any reference to alterations to or use of, any part of the property does not mean that any necessary planning, building regulations or other consents have been obtained

