

CHESTERTONS





Thornwood Gardens

Holland Park, W8 7ER

“*This exquisite three-bedroom apartment near Holland Park exemplifies luxury living in one of London’s most desirable neighbourhoods. It seamlessly blends modern design with classic elegance, creating a sophisticated yet inviting home.*”

Long let: £5,499.92 per week / £23,833 per month

3



4



2,600
sqft





Property Description

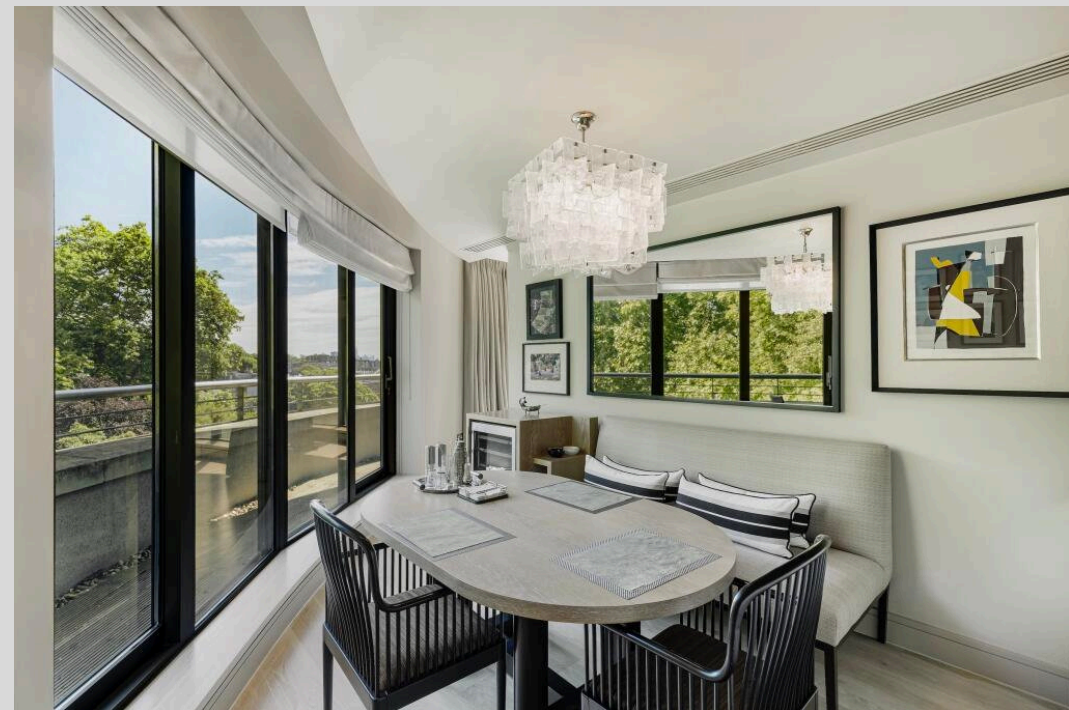
An exquisite three-bedroom apartment near Holland Park. The spacious reception area is bathed in natural light from floor-to-ceiling windows, highlighting the chic interiors, stylish furnishings, and premium finishes. A neutral colour palette, enhanced by tasteful accents, fosters a warm and welcoming ambiance—ideal for both entertaining and relaxation.

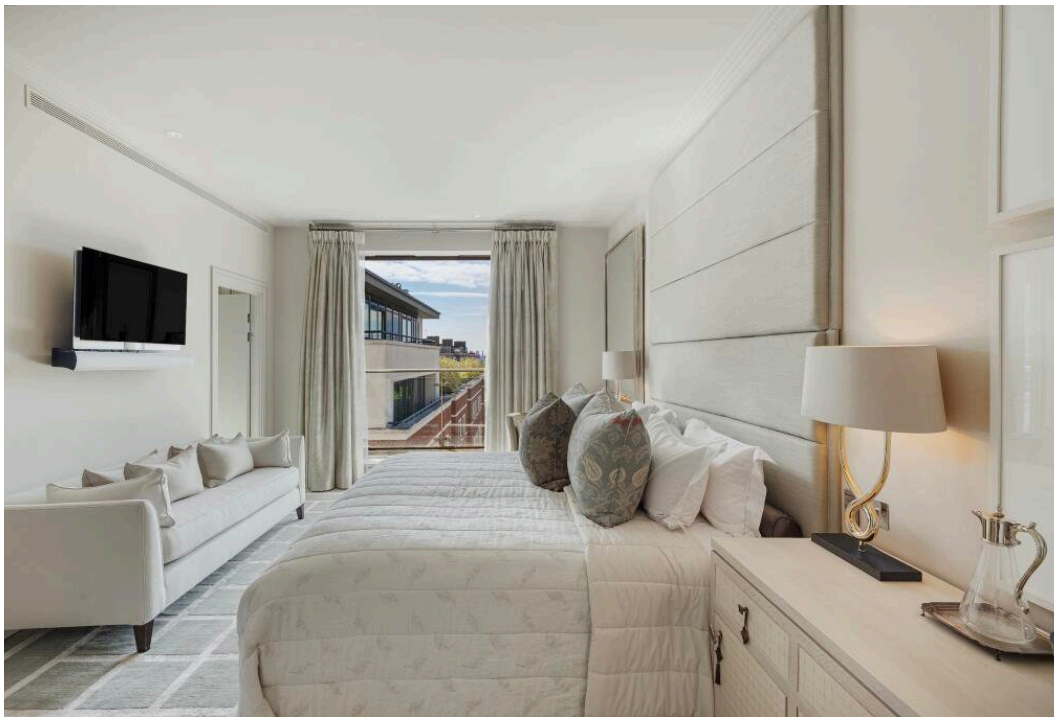
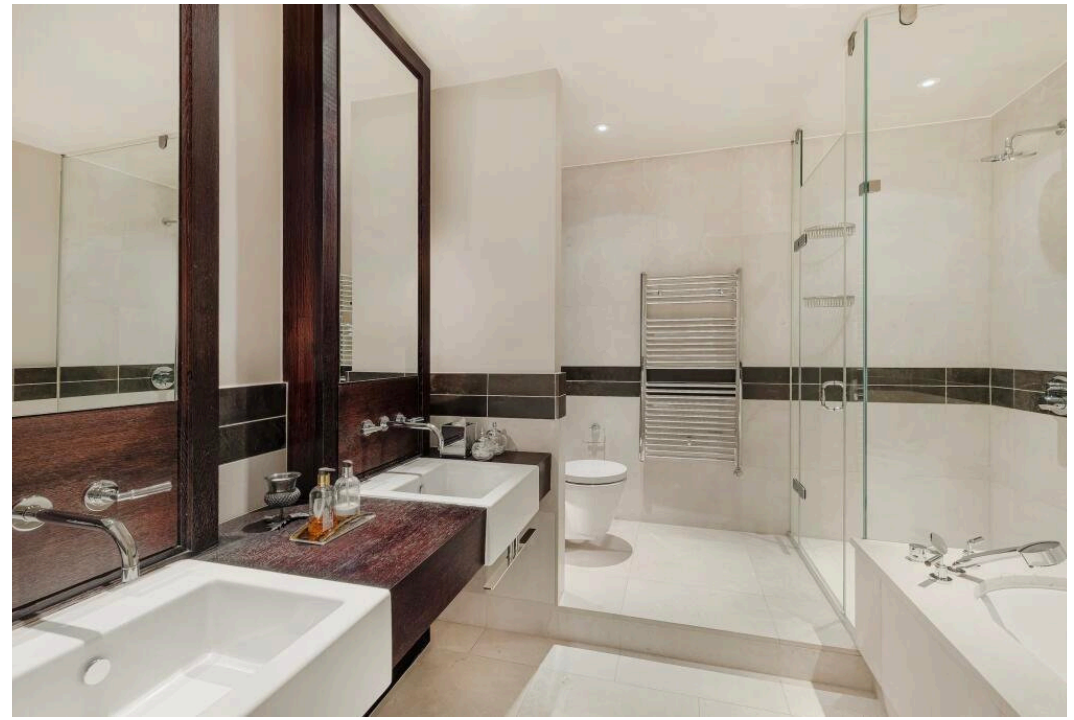
Each generously sized bedroom is designed for maximum comfort, featuring plush carpets, custom-built storage, and opulent en suite bathrooms. The master suite offers a tranquil retreat, complete with expansive windows and bespoke finishes.

The sleek, state-of-the-art kitchen is fitted with high-end appliances, contemporary cabinetry, and ample counter space, making it perfect for everything from casual meals to gourmet cooking.

Located within a prestigious development, the property offers exceptional amenities, including a 24-hour concierge service, private gardens, and underground parking. A secure gated entrance and lift access further enhance convenience and security.

Just moments from Holland Park, this residence provides a peaceful escape while remaining close to the vibrant offerings of Kensington High Street and Notting Hill. With excellent transport links, world-class shopping, fine dining, and cultural attractions nearby, this exceptional apartment delivers an unmatched standard of luxury and exclusivity—ideal for those seeking the finest in London living.

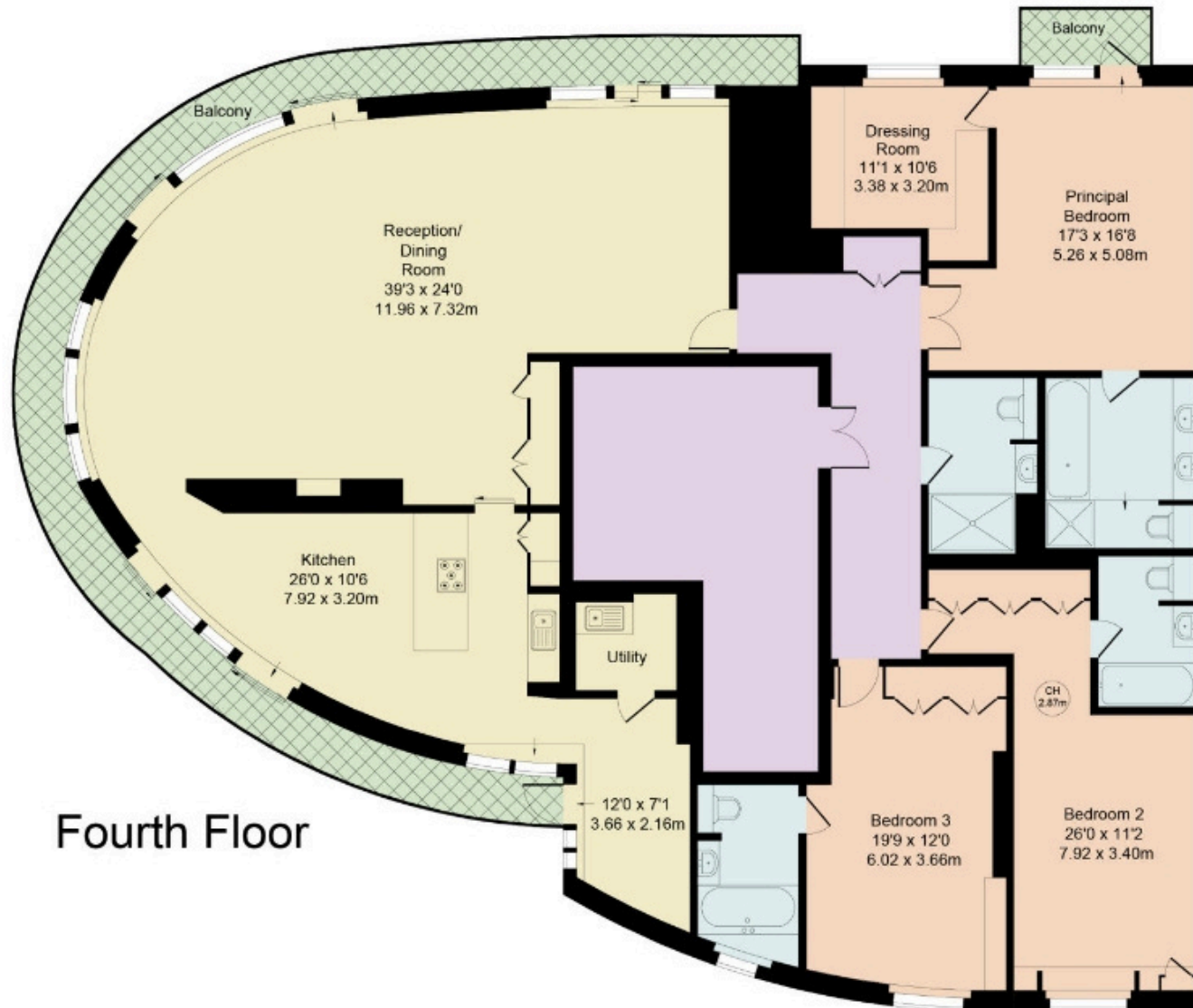




Campden Hill, W8

Approximate Gross Internal Area 2608 sq ft - 242.29 sq m

Key :
CH - Ceiling Height



Fourth Floor