



Borland Road, SE15

£300,000

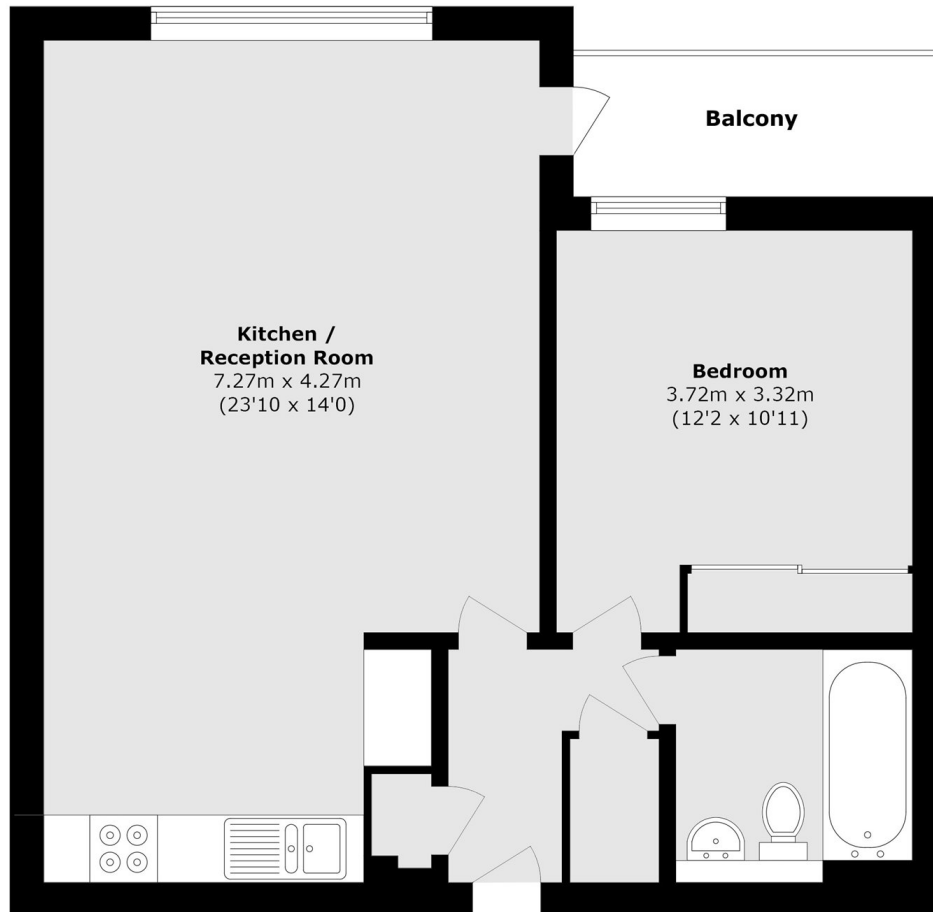
A well presented one double bedroom purpose built flat set within a small private development. Offered chain free with residents parking and communal gardens this is an ideal purchase for a first time buyer.

Borland Road is a quiet tree-lined street perfectly located for the extensive shopping facilities, bars and restaurants of Peckham and Nunhead station for trains to Victoria, Blackfriars, City Thameslink, Farringdon and St Pancreas.

Features

- Private Balcony
- Bright Reception
- Excellent Location
- One Double Bedroom
- Long Lease
- No Onward Chain

Borland Road,
London, SE15



Total area (approx.): 52.0 sq. m (559.7 sq. ft)

Balcony area (approx.): 4.3 sq. m (46.2 sq. ft)

Dexters

Peckham Rye
2 Barry Parade
Barry Road
London
Sales
020 8742 4146

Energy Rating: D. We aim to make our particulars both accurate and reliable. However they are not guaranteed; nor do they form part of an offer or contract. If you require clarification on any points then please contact us, especially if you're traveling some distance to view. Please note that appliances and heating systems have not been tested and therefore no warranties can be given as to their good working order.

 **RICS** | Regulated
Estate Agent
and Letting Agent

[dexters.co.uk](https://www.dexters.co.uk)