



# 1 Springwood Gardens, Woodthorpe - NG5 4HB

Guide Price £500,000 - £525,000



# 1 Springwood Gardens

Woodthorpe, Nottingham

GUIDE PRICE £500,000 - £525,000 Stunning chalet-style detached home on the highly sought-after Springwood Gardens! Offering 4 double beds (all en-suite), generous living space and multi-car parking!

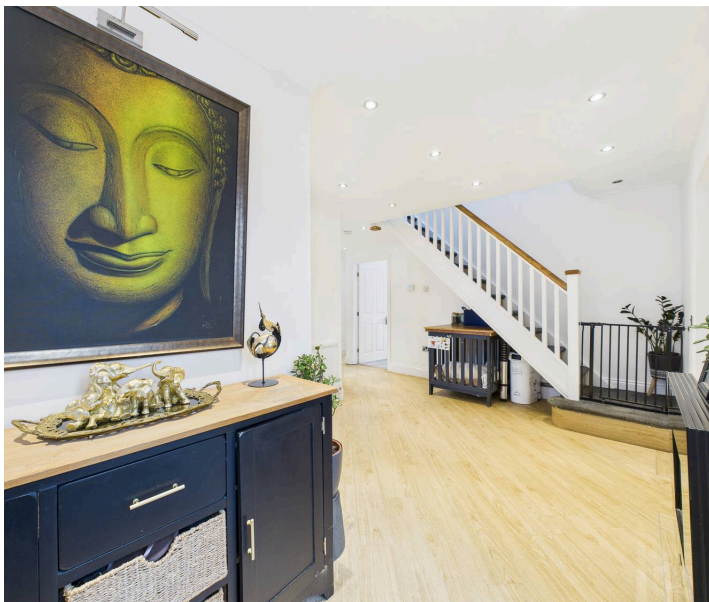
Council Tax band: C

Tenure: Freehold

EPC Energy Efficiency Rating: C

EPC Environmental Impact Rating:

- Beautifully presented chalet-style detached home
- Ideal for a variety of buyers and in a highly sought-after location close to Mapperley's excellent amenities
- High-quality finishes throughout showcasing thoughtful upgrades and cohesive interior styling
- Inviting entrance hall with a convenient cloakroom/WC
- Spacious and welcoming lounge with a stunning and light-filled adjoining conservatory/dining area
- Contemporary fitted kitchen with sleek cabinetry and quality integrated appliances
- Four double bedrooms (each with the luxury of an en-suite)
- First floor bedrooms feature vaulted ceilings and convenient fitted wardrobes
- Corner plot provides low-maintenance gardens with decking, patio space and a summer house
- Gated driveway and detached garage offering secure and generous off-road parking for multiple vehicles









Floor 0



Floor 1

**Approximate total area<sup>(1)</sup>**

164.5 m<sup>2</sup>

1772 ft<sup>2</sup>

**Reduced headroom**

4.5 m<sup>2</sup>

48 ft<sup>2</sup>

(1) Excluding balconies and terraces

Reduced headroom

----- Below 1.5 m/5 ft

Calculations reference the RICS IPMS 3C standard. Measurements are approximate and not to scale. This floor plan is intended for illustration only.

**GIRAFFE360**



## David James Estate Agents

David James Estate Agents, 45B Plains Road - NG3 5JU

0115 962 4213 • [mapperley@david-james.com](mailto:mapperley@david-james.com) • [www.david-james.com](http://www.david-james.com)

These particulars are produced in good faith and are set out as a general guide only. Measurements are approximate and floor plans are for illustrative purposes only. Services have not been tested. We have established professional relationships with third-party suppliers for the provision of services to Clients, details of which can be found on the property listing page on our website.