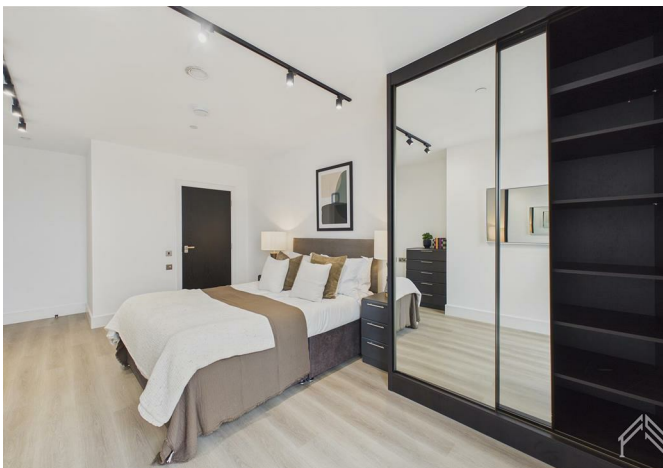




66533 Mitre Way, North Kensington, London, London, NW10 6RH
£3,400 Per month





66533 Mitre Way, North Kensington, London, London, NW10 6RH

£3,400 Per month

New Offer 4 Weeks Rent Free + £1000 Cash Back. Live differently. GYM | ROOF TERRACE | 24H CONCIERGE | PARKING.

North Kensington's most refined address has arrived.

These exclusive apartments are finished to an exceptional standard and built around how you actually want to live with 24-hour concierge, a Technogym-equipped residents' gym, stunning roof terraces, and car parking from just £70pcm. Every detail considered. Everything on your doorstep.

Enjoy the reassurance of a 24/7 concierge, on-site maintenance, and a dedicated management team on hand whenever you need support. Outside your front door, you'll find an exceptional selection of lifestyle amenities: work up a sweat in the on-site gym, unwind across five beautifully designed rooftop terraces and courtyards, and get to know your neighbours through exclusive resident events. If you work from home, the resident lounges and co-working spaces offer a stylish, comfortable setting to stay productive without leaving the building.

Description

Situation



Furnished/unfurnished

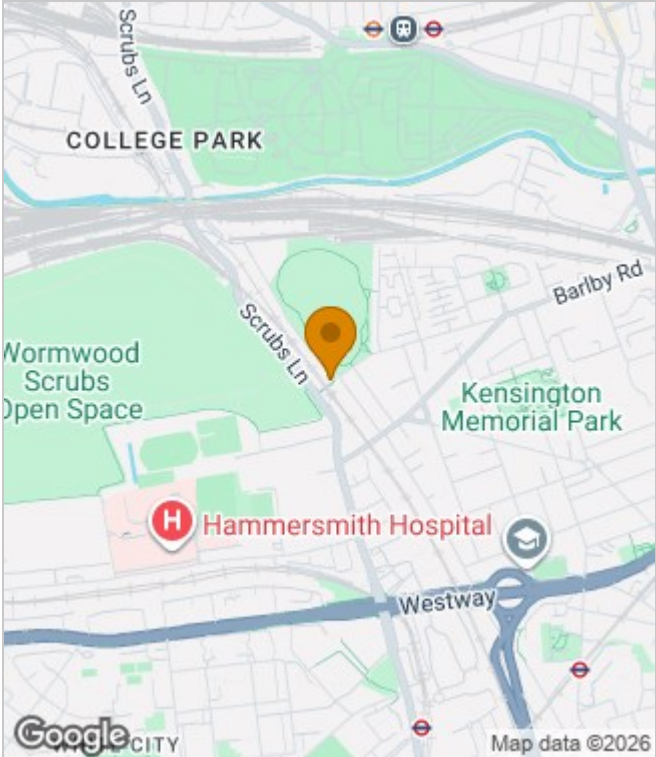
Council Tax Band: B

Available:

Floor Plans



Area Map



Energy Performance Graph

Energy Efficiency Rating		Current	Potential
Very energy efficient - lower running costs			
(92 plus) A			
(81-91) B		82	82
(69-80) C			
(55-68) D			
(39-54) E			
(21-38) F			
(1-20) G			
Not energy efficient - higher running costs			
England & Wales		EU Directive 2002/91/EC	

These particulars, whilst believed to be accurate are set out as a general outline only for guidance and do not constitute any part of an offer or contract. Intending purchasers should not rely on them as statements of representation of fact, but must satisfy themselves by inspection or otherwise as to their accuracy. No person in this firm's employment has the authority to make or give any representation or warranty in respect of the property.