



PRINCEDALE ROAD, W11

£1,250,000

Spacious Duplex
Great Location
Two Bedrooms
Stylish Interior
Period Building
Quiet Street

@marshandparsons
marshandparsons.co.uk

MARSH &
PARSONS



ABOUT THE PROPERTY

A beautifully presented two bedroom, two bathroom apartment in a wonderful Holland Park location.

The upper level is dedicated to bedroom accommodation and features two spacious double bedrooms, both with en-suite bathrooms. The principal suite incorporates a bespoke walk-through wardrobe.

The lower level centres around a living and entertaining space. A stylish reception room with custom cabinetry, integrated bar and wine fridge flows into a contemporary kitchen. The kitchen is fitted with a central island and dining area.

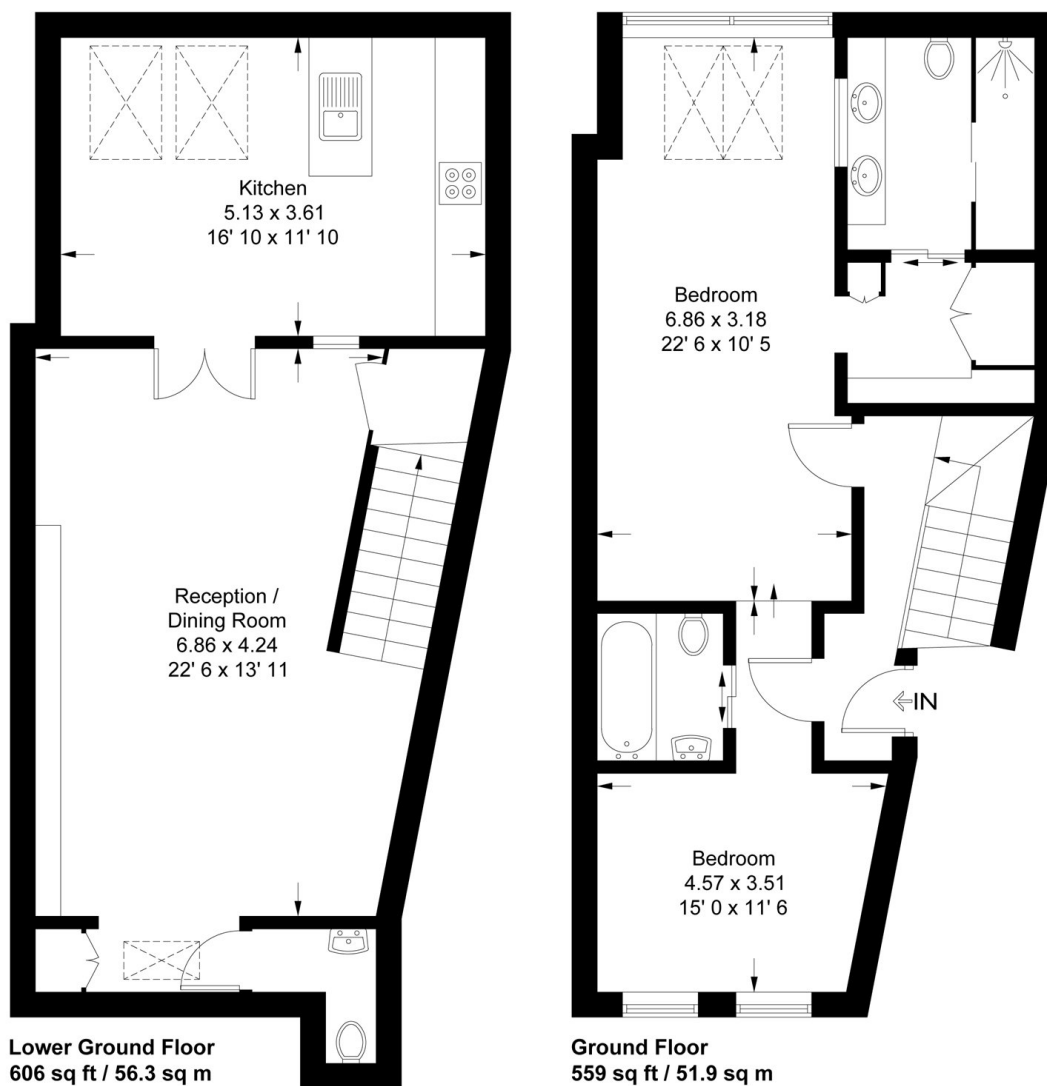


STEP INSIDE PRINCEDALE ROAD

Princedale Road



Approximate Gross Internal Area = 1165 sq ft / 108.2 sq m



This plan is not to scale and must be used as layout guidance only. All measurements and areas are approximate and should not be relied upon to provide accurate information. This plan must not be relied upon when making property valuations, design considerations or any other such relevant decisions. We accept no responsibility or liability (whether in contract, tort or otherwise) in relation to any loss whatsoever arising from or in connection with any use of this plan or the adequacy, accuracy or completeness of it or any information within it.

Holland Park
020 7605 6890

Energy Rating: We aim to make our particulars both accurate and reliable. However, they are not guaranteed; nor do they form part of an offer or contract. If you require clarification on any points then please contact us, especially if you're traveling some distance to view. Please note that appliances and heating systems have not been tested and therefore no warranties can be given as to their good working order

**MARSH &
PARSONS**