



Redcliffe Square, SW10

£623 Per week

Dexters



Redcliffe Square, SW10

A spacious and well-presented one-bedroom property, featuring period details such as high ceilings. The apartment offers a bright and airy reception room with space for dining, along with a contemporary, well-equipped kitchen.

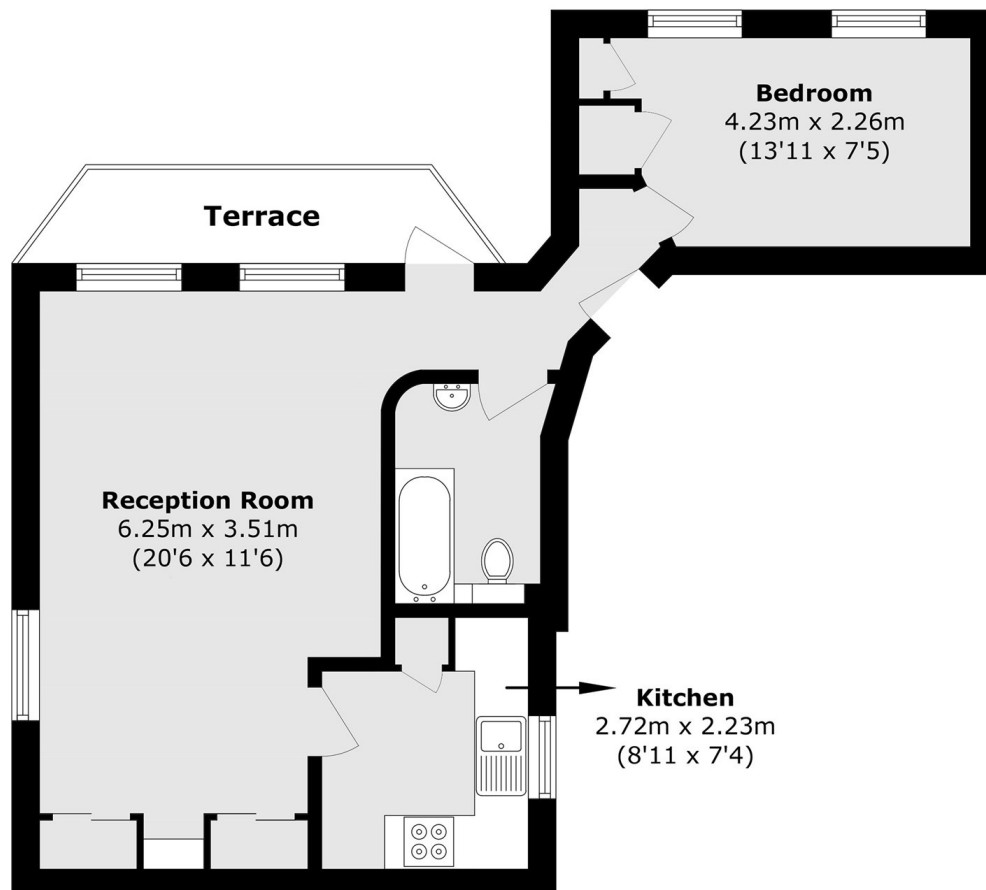
Located just moments from Fulham Road, the property benefits from excellent transport connections, with West Brompton, Earl's Court, and Fulham Broadway stations all situated within a mile.

Features

- One Bedroom
- Excellent Location
- Balcony
- Wooden Floors
- Modern Bathroom
- Ample Storage



Redcliffe Square, London, SW10



Total area (approx.): 43.9 sq. m (472.5 sq. ft)
Terrace area (approx.): 29.2 sq. m (314.3 sq. ft)