



THE
HOMES
GROUP



Milton Road, Swanscombe, DA10 0LY
Offers in excess of £290,000 - £325,000 Freehold

 3  1  1  D

The Homes Group are delighted to present this three bedroom Victorian style mid-terrace house with a garage to rear that is offered with no chain. Situated within close proximity of Swanscombe Station, Ebbsfleet International, shops and a variety of educational facilities. The accommodation comprises of a 24'6 x 11'5 living/dining room, a 9'10 x 6' kitchen and a 10'7 x 5'7 bathroom on the ground floor. On the first floor there are three separate bedrooms measuring 11'8 x 11'6, 9'5 x 8'3 and 9'5 x 6'1. There is a 20' x 10'6 detached garage to the rear at the end of the 25' garden.

Living/Dining Room

24'6 x 11'5 (7.47m x 3.48m)

Kitchen

9'10 x 6' (3.00m x 1.83m)

Lobby

Ground Floor Bathroom

10'7 x 5'7 (3.23m x 1.70m)

Landing

Bedroom One

11'8 x 11'6 (3.56m x 3.51m)

Bedroom Two

9'5 x 8'3 (2.87m x 2.51m)

Bedroom Three

9'5 x 6'1 (2.87m x 1.85m)

Rear Garden

25' (7.62m)

Detached Garage to Rear

20' x 10'6 (6.10m x 3.20m)

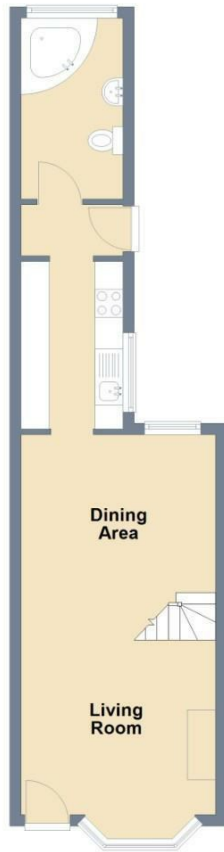
Tenure - Freehold

Council Tax - Band B





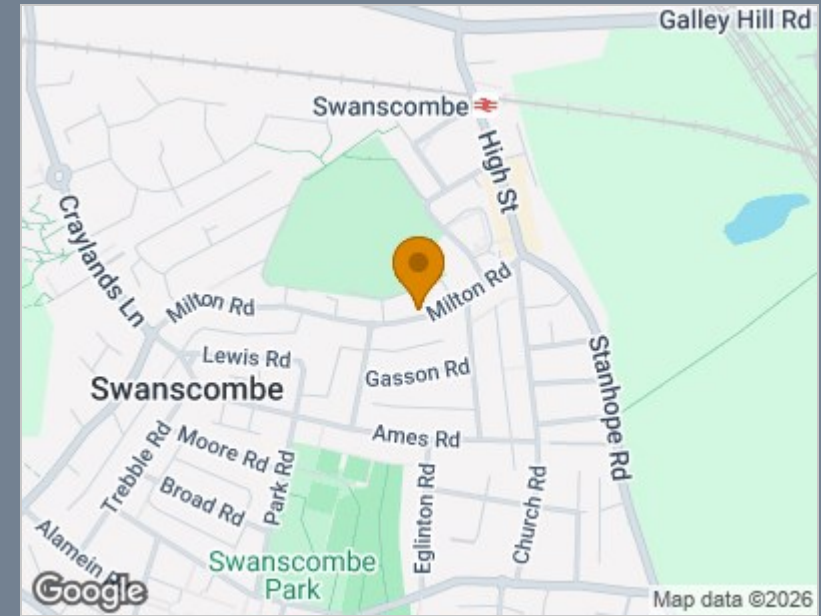
Ground Floor



First Floor



Total area: approx. 66.8 sq. metres (719.3 sq. feet)



Energy Efficiency Rating		
	Current	Potential
<i>Very energy efficient - lower running costs</i>		
(92 plus) A		
(81-91) B		
(69-80) C		79
(55-68) D	66	
(39-54) E		
(21-38) F		
(1-20) G		
<i>Not energy efficient - higher running costs</i>		
England & Wales	EU Directive 2002/91/EC	

Viewing

Please contact The Homes Group Office on 01322 875000 if you wish to arrange a viewing appointment for this property or require further information.

These particulars, whilst believed to be accurate are set out as a general outline only for guidance and do not constitute any part of an offer or contract. Intending purchasers should not rely on them as statements of representation of fact, but must satisfy themselves by inspection or otherwise as to their accuracy. No person in this firm's employment has the authority to make or give any representation or warranty in respect of the property.