



Bramdene The Drive, Bosham - PO18 8JG

Guide Price £1,999,950 - FREEHOLD



STRIDE & SON

Bramdene The Drive

Bosham

A substantial five-bedroom detached home offering approximately 3,501 sq ft, with exceptional open-plan living, a gym, office, playroom, double garage and landscaped garden with covered BBQ area too.

- Substantial five-bedroom detached family home of approximately 3,501 sq ft
- Stunning open-plan kitchen/breakfast/family room with bi-fold doors to the garden
- Beautifully presented throughout with high-quality fixtures and fittings
- Generous principal bedroom suite with dressing area and luxury en-suite bathroom
- Four further well-proportioned bedrooms, family bathroom and further shower room
- Dedicated home gym and ground floor office, ideal for flexible living and working
- Separate sitting room and first-floor playroom offering excellent family space
- Beautifully landscaped rear garden with patio, lawn and covered outdoor entertaining area
- Double garage and ample driveway parking
- Sought-after location in the picturesque coastal village of Bosham





Bramdene is an exceptionally spacious and versatile five-bedroom detached family home, providing approximately 3,501 sq ft of beautifully presented accommodation, including the double garage.

Arranged across two floors, the property has been designed with modern family life and entertaining firmly in mind.

The centrepiece of the home is the expansive open-plan kitchen, dining and family room. Multiple roof lanterns, extensive glazing and bi-folding doors flood the space with natural light while creating a seamless connection with the rear garden.

The kitchen is fitted with an extensive range of contemporary cabinetry, granite work surfaces, a substantial central island, breakfast-bar seating and integrated cooking appliances. The generous proportions allow for several distinct dining, seating and entertaining areas, making this an outstanding space for everyday family life as well as larger social occasions. A separate sitting room offers a quieter and more traditional reception space.

Further ground-floor accommodation includes a dedicated home office, an impressive private gym with mirrored walls, a fitted utility room and a cloakroom.







On the first floor, the spacious principal bedroom incorporates an extensive dressing room with open wardrobes and a luxurious en-suite bathroom featuring twin basins, a large shower enclosure and a spa-style bath.

There are four further well-proportioned bedrooms, offering excellent flexibility for family members and guests. The first floor is completed by a family bathroom, an additional separate shower room and a generous playroom area, which could also be used as a television room, games room or further home-working space.

Outside, the landscaped rear garden has been thoughtfully arranged for relaxation and entertaining. A large lawn is surrounded by paved terraces and established planting, while a substantial covered BBQ area provides an excellent setting for outdoor dining, seating and entertaining throughout the warmer months.



The bi-folding doors open the principal living space directly onto the garden, creating an impressive indoor-outdoor environment and completing this superbly appointed family home.

The substantial double garage can be accessed internally, while the broad driveway provides generous off-road parking.



Bramdene occupies a pleasant residential position on The Drive in the desirable harbourside village of Bosham, close to the waters and surrounding countryside of Chichester Harbour.

Bosham is renowned for its picturesque quay, attractive coastal walks and village atmosphere, with a selection of local shops, cafés, pubs and everyday amenities available nearby. The surrounding harbour provides numerous opportunities for sailing, paddleboarding, kayaking, cycling and walking.

Bosham railway station is within convenient reach and provides connections towards Chichester and destinations along the south coast. The cathedral city of Chichester offers a broader selection of shops, restaurants, cultural attractions, leisure facilities and educational establishments.

The property is also well positioned for access to the surrounding West Sussex countryside, nearby coastal villages and the South Downs, making it an appealing location for buyers seeking village living with convenient transport connections.

Council Tax band: TBD

Tenure: Freehold





S & L
EST 1890



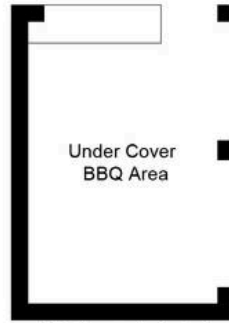
STRIDE & SON

Bramdene, The Drive, PO18 8JG

Approximate Gross Internal Area = 325.3 sq m / 3501 sq ft
(Including Double Garage / Excluding Under Cover BBQ Area)

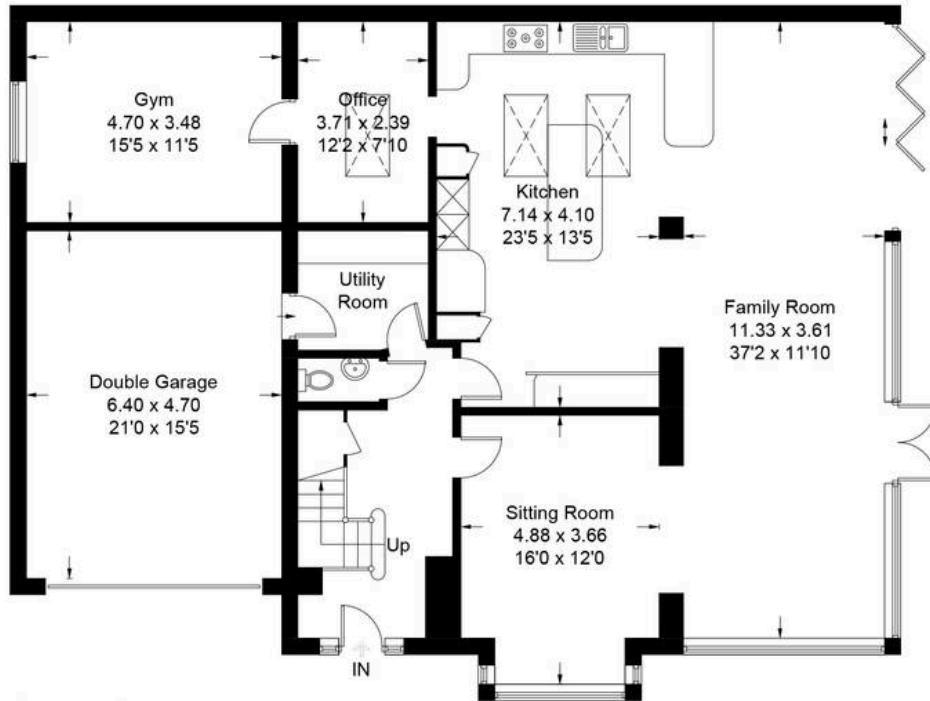


Produced for Stride & Son Estate Agent.



(Not Shown In Actual Location / Orientation)

= Reduced headroom below 1.5m / 5'0"



Ground Floor



First Floor

Whilst every attempt has been made to ensure the accuracy of the floor plan contained here, measurements of doors, windows, rooms and any other items are approximate and no responsibility is taken for any error, omission, or misstatement. This plan is for illustrative purposes only and should be used as such by any prospective purchaser.

Created by Emzo Marketing 2026. (ID1311037)



Stride & Son

Stride & Son, 37 South Street - PO19 1EL

01243 782626

contact@strideandson.co.uk

www.strideandson.co.uk



This brochure is for guidance only and does not form part of any contract. While every effort is made to ensure accuracy, measurements, descriptions and details are approximate. Interested parties should carry out their own checks and inspections before making any decisions. Fixtures, fittings and appliances have not been tested and no warranty is given on their condition.