



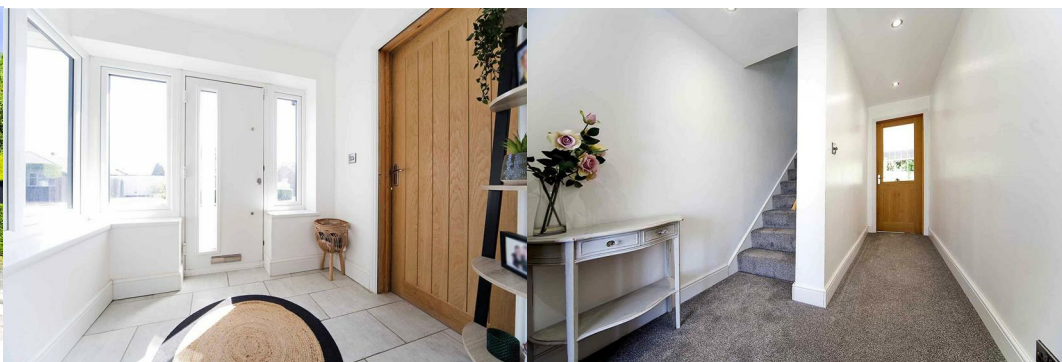
14 Holland Road

, Hartlepool, TS25 2JE

£270,000



Igomove have instructions to list this hugely extended (to the dude & rear), four bedroom detached property located in the popular fens area. It offers a host of desirable elements which include; for well proportioned bedrooms, modern family bathroom, huge open concept lounge/ diner/ kitchen and family room, separate dining room/lounge, playroom/study, utility room, guest cloakroom, entrance hallway, gardens, three car driveway, anthracite UPVC double glazing and new doors, gas central heating, modern decor, oak interior doors, freehold.



Well presented rendered facade, end plot, low maintenance garden, three vehicle driveway, front door into;

Porch entry with large cupboard, tiled floor, neutral decor, recessed spotlights.

Entrance hallway with stairs to the first floor accommodation.

Playroom/study with fitted storage cupboard, modern herringbone flooring, recessed spotlights, neutral decor.

Dining room/sitting room with front elevation window, tasteful decor.

Fantastic open concept family room/dining kitchen, extended and with by folding doors which open up fully to the rear garden, the kitchen is fitted with a range of stylish contemporary wall, larder, base, and drawer cabinetry with complementary surfaces, central breakfasting Island, integrated wine cooler, integrated oven, integrated ceramic hob, integrated extractor, integrated dishwasher, space for American fridge freezer, one and a half bowl inset sink with mixer taps, tiled floor, wine racks, recessed spotlights, ample space for seating and dining, a great entertaining space.

Useful utility room with plumbing for washing machine and space for tumble dryer, half glazed exterior door, modern flooring.

Guest cloakroom which comprises concealed cistern WC and wall mounted glass washbasin, chrome heated towel radiator.

To the first floor landing, there is a fitted storage cupboard, loft access and access to;

Bedroom one is a double room located at the front of the property with fitted mirrored wardrobes, recessed spotlights, neutrally presented.

Bedroom two is a further double situated to the rear, pretty decor, recessed spotlights.

Bedroom three is of single proportions with front elevation window, recessed spotlights, pastel decor.

Bedroom four is a huge dual aspect double room in need of completion.

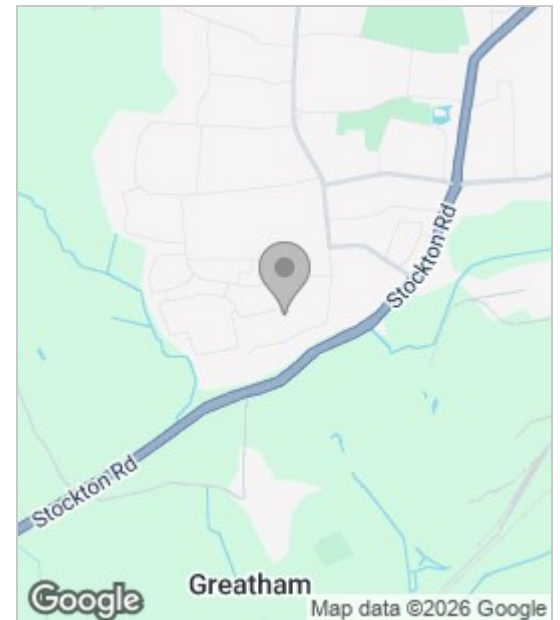
The stylish family bathroom comprises 'P' shaped bath with over bath shower, concealed cistern WC and vanity wash basin combination unit with beautiful complementary tiling.

To the rear is an enclosed garden laid to lawn with patio area, garden shed.

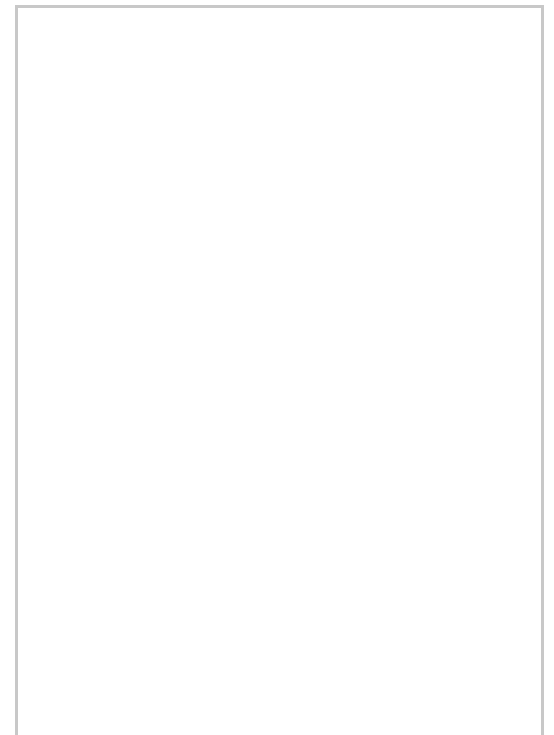
Greatly extended, this modern property offers a host of accommodation ideal for family requirements, it just needs some finishing touches to the renovations so that every room can be enjoyed to

Its full potential, contact Igomove today who will be happy to assist with arranging your viewing.

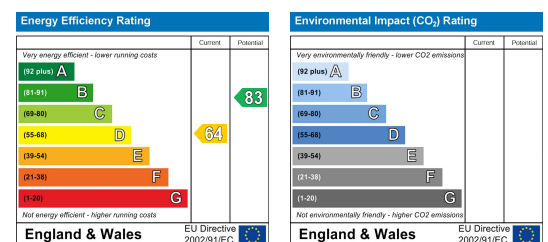
Area Map



Floor Plan



Energy Efficiency Graph



These particulars, whilst believed to be accurate are set out as a general outline only for guidance and do not constitute any part of an offer or contract. Intending purchasers should not rely on them as statements of representation of fact, but must satisfy themselves by inspection or otherwise as to their accuracy. No person in this firm's employment has the authority to make or give any representation or warranty in respect of the property.