



16

Dillichip Close, Alexandria, Dumbartonshire G83 9JP





16

Dillichip Close, Alexandria, Dumbartonshire G83 9JP



Situated within the sought-after Old Bonhill area, 16 Dillichip Close is a beautifully reconfigured four-bedroom detached villa presented in immaculate condition throughout, with an easily reinstated fifth bedroom option. Originally dating from the late 1980s, the property forms part of a small, established development and enjoys an open rear outlook over green space towards the Carman Hills.

EPC Band C

Council Tax Band E





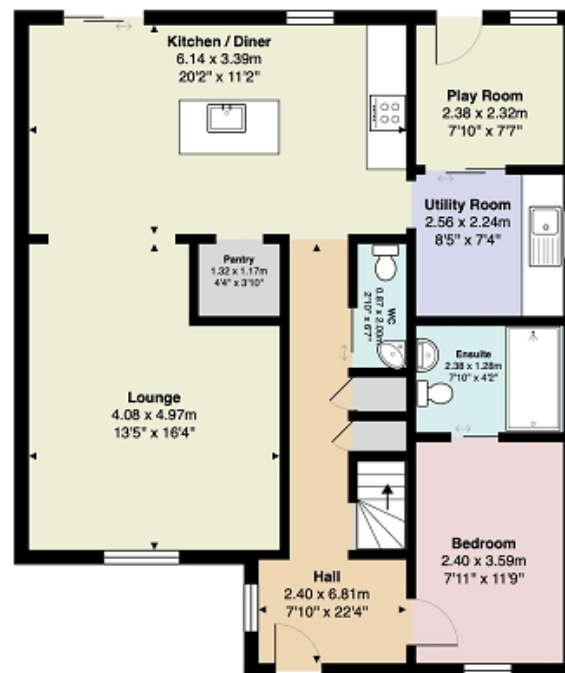
16
Dillichip Close, Alexandria, Dumbartonshire G83 9JP



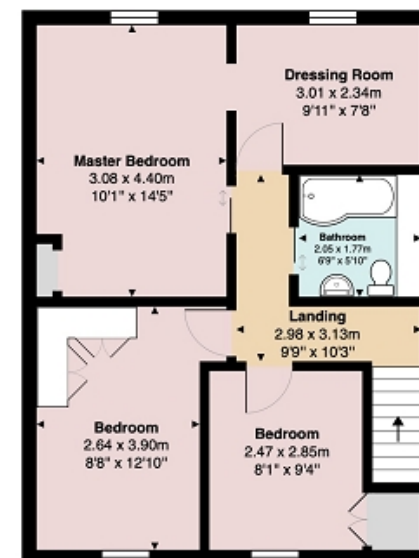


Measurements

Hallway	22' 04" Max x 7' 10" Max or 6.81m Max x 2.39m Max
WC	6' 07" x 2' 10" or 2.01m x 0.86m
Lounge	16' 04" Max x 13' 05" Max or 4.98m Max x 4.09m Max
Kitchen/Diner	20' 02" x 11' 02" or 6.15m x 3.40m
Pantry	4' 04" x 3' 10" or 1.32m x 1.17m 7' 10" x 7' 07" or 2.39m x 2.31m
Utility Room	8' 05" x 7' 04" or 2.57m x 2.24m
Bedroom 4	11' 09" x 7' 11" or 3.58m x 2.41m
En Suite	7' 10" x 4' 02" or 2.39m x 1.27m
Landing	10' 03" Max x 9' 09" Max or 3.12m Max x 2.97m Max
Bedroom 1	14' 05" Max x 10' 01" Max or 4.39m Max x 3.07m Max
Dressing Room	9' 11" x 7' 08" or 3.02m x 2.34m
Bedroom 2	12' 10" Max x 8' 08" Max or 3.91m Max x 2.64m Max
Bedroom 3	9' 04" x 8' 01" or 2.84m x 2.46m



Ground Floor



First Floor

All measurements are approximate and for display purposes only

Contact our office for further details



rightmove
find your happy

NOTE: These details have been prepared for guidance. If there is any point which you find misleading please contact McArthur Stanton where further information is available. Measurements have been taken from wall to wall, unless otherwise stated, and have been recorded by use of a sonic beam. Services and appliances not tested. Details have been prepared by February 2026. If required, we can arrange for a property market appraisal to be carried out on your existing property.

16

Dillichip Close, Alexandria, Dumbartonshire G83 9JP

