



## Woolstone Road, SE23

£535,000

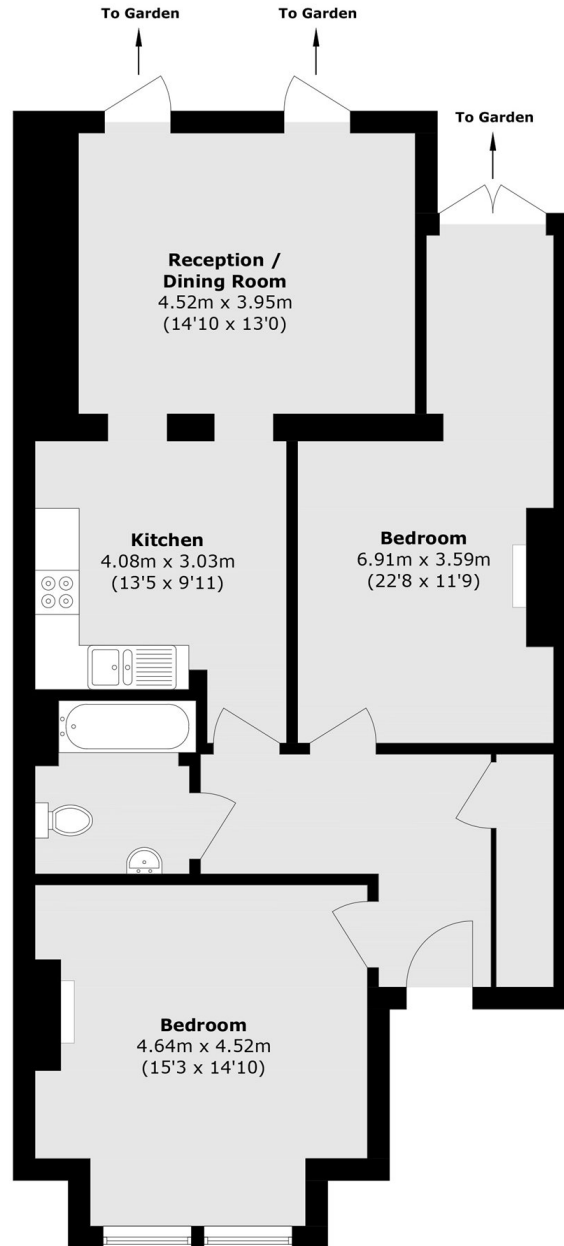
This charming ground floor period flat offers two well proportioned bedrooms and a wealth of character features throughout. The property further benefits from off street parking, a private garden and is being offered chain free.

Woolstone Road is ideally located within easy reach of Forest Hill, Catford and Catford Bridge stations providing convenient links into central London. The area benefits from a range of independent cafés, restaurants and amenities around Forest Hill and Catford high streets. Residents can also enjoy nearby green spaces including Blythe Hill Fields and Ladywell Feilds.

### Features

- Ground Floor Flat
- Two Bedrooms
- Period Features
- Off Street Parking
- Private Garden
- Chain Free

Woolstone Road,  
London, SE23



Total area (approx.): 92.5 sq. m (995.6 sq. ft)