

**Shaw
& Co**
ESTATE
AGENTS

£425,000

Albion Road

Hounslow, TW3 3RS

**Shaw
& Co**

PROPERTY SUMMARY

A charming 2 bedroom cottage located on Albion Road in Hounslow. This mid-terrace house offers a perfect blend of period character and modern convenience. Built in 1910, the property showcases the architectural charm typical of its era, while providing a comfortable living space.

Internally the property boast two reception rooms, leading into a kitchen and ground floor bathroom. To the first floor are two double bedrooms with an e-suite to bedroom two.

Located in Central Hounslow, the property benefits from excellent transport links, with easy access to local amenities with Hounslow High Street only a short walk away.

In summary, this mid-terrace house on Albion Road presents a wonderful opportunity for those seeking period features and practical layout, it is sure to appeal to a wide range of buyers or buy to let investors.

2



2



1



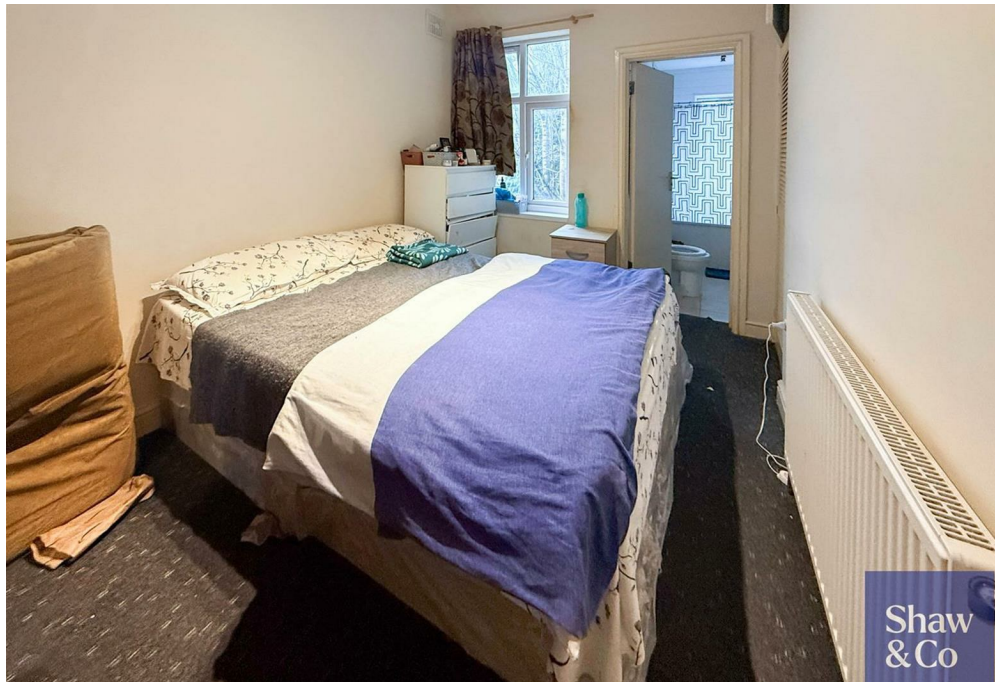
Shaw
& Co



Shaw
& Co



Shaw
& Co

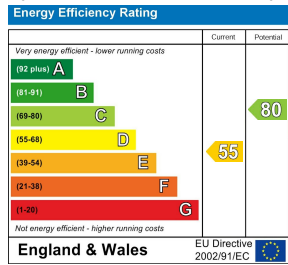


LOCAL AUTHORITY
Hounslow

TENURE
Freehold

COUNCIL TAX BAND

VIEWINGS
By prior appointment only



Agents Note: Whilst every care has been taken to prepare these particulars, they are for guidance purposes only. All measurements are approximate and are for general guidance purposes only and whilst every care has been taken to ensure their accuracy, they should not be relied upon and potential buyers/tenants are advised to recheck the measurements

Shaw
& Co
ESTATE
AGENTS

OFFICE ADDRESS
10 Central Parade
New Heston Road
Heston
Middlesex
TW5 0LJ

OFFICE DETAILS
0208 570 7258
heston@shawandcoestates.com