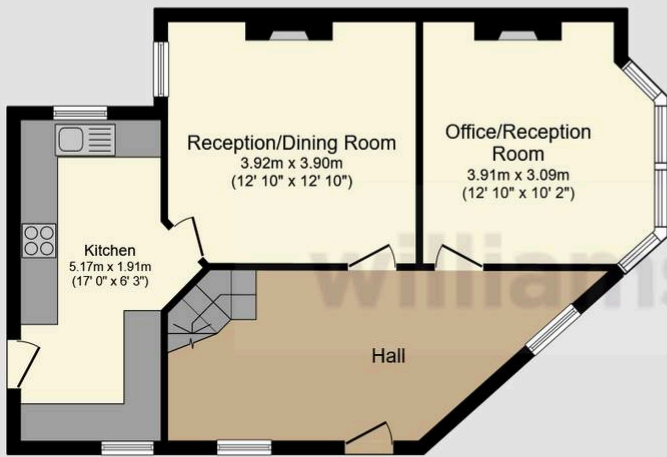




70 Parc Y Dre Road, Ruthin, LL15 1PG – £210,000

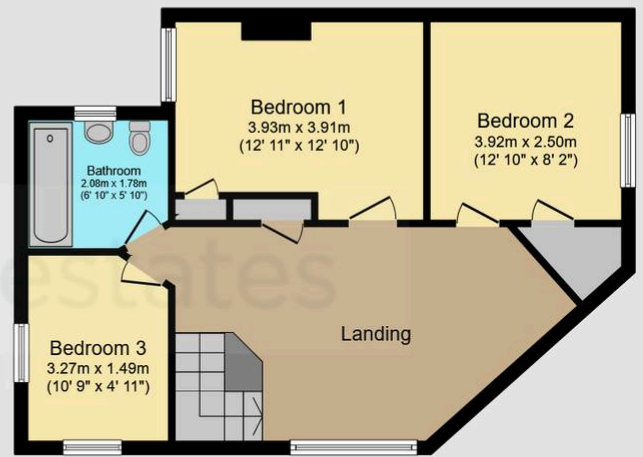
Tenure: Freehold | EPC: C69 | Council Tax: C

A traditional three bedroomed semi detached house with a good sized rear garden and ample parking, set on the corner plot. The property is within easy access of all local schools and the town centre amenities and offers living room with dining area, a snug/office with a log burner, fitted kitchen, three bedrooms and a family bathroom. Added benefits of UPVC double glazing to all windows and central heating. Viewing is highly recommended.



Ground Floor

Floor area 58.2 sq.m. (626 sq.ft.)



First Floor

Floor area 56.4 sq.m. (607 sq.ft.)

Total floor area: 114.6 sq.m. (1,233 sq.ft.)

This floor plan is for illustrative purposes only. It is not drawn to scale. Any measurements, floor areas (including any total floor area), openings and orientations are approximate. No details are guaranteed, they cannot be relied upon for any purpose and do not form any part of any agreement. No liability is taken for any error, omission or misstatement. A party must rely upon its own inspection(s). Powered by www.Propertybox.io

williams
estates



YOUR FREE PROPERTY REPORT



WE OFFER FREE ADVICE

MORTGAGES - SURVEYS - SOLICITORS

