



PERIOD
HOMES

Rose Cottage, Heron Chase, Herongate. CM13 3PP

£475,000

Located within the village of Herongate and within close proximity to local country parks and amenities is this beautiful, Grade II listed cottage. Within easy reach of Thorndon Country Park with excellent access to the A127 linking to the M25. The property also benefits from off street parking for several vehicles. You approach this elegant cottage through the pretty front garden with shrubbery marking the boundary for privacy. When entering the porch, you start to appreciate the character and elegance of this stunning cottage and are greeted with a spacious hall, with views across the front elevation and storage cupboard. On from the entrance hall is a cosy sitting room, with an impressive red brick fireplace and feature beams. Leading from the hall is a spacious kitchen which benefits from some integrated appliances, ample storage, tiled flooring and a separate oven with gas hob. Accessing from the kitchen is a further large reception, offering space for a dining table and dresser, with views across the garden.

Stairs leading to the first floor living accommodation, accesses two good sized bedrooms, the principle room benefits from a stunning red brick fireplace and store cupboard. A family, three-piece bathroom with a shower over bath, all decorated to a good standard whilst keeping of the period charm completes the upstairs living accommodation.

Externally the cottage offers a beautiful wrap around garden, with plentiful trees, shrubbery, part lawn and perfect views across the duck pond, adjacent to the property. The property benefits from 2 off street parking for two vehicles. A viewing of this property is a must to appreciate the delightful charm and character on offer.



Rose Cottage, Heron Chase

Herongate, Brentwood. CM13 3PP

Located within the village of Herongate and within close proximity to local country parks and amenities is this beautiful, Grade II listed cottage.

Council Tax band: E

Tenure: Freehold

EPC Energy Efficiency Rating: E

EPC Environmental Impact Rating: E









Heron Chase

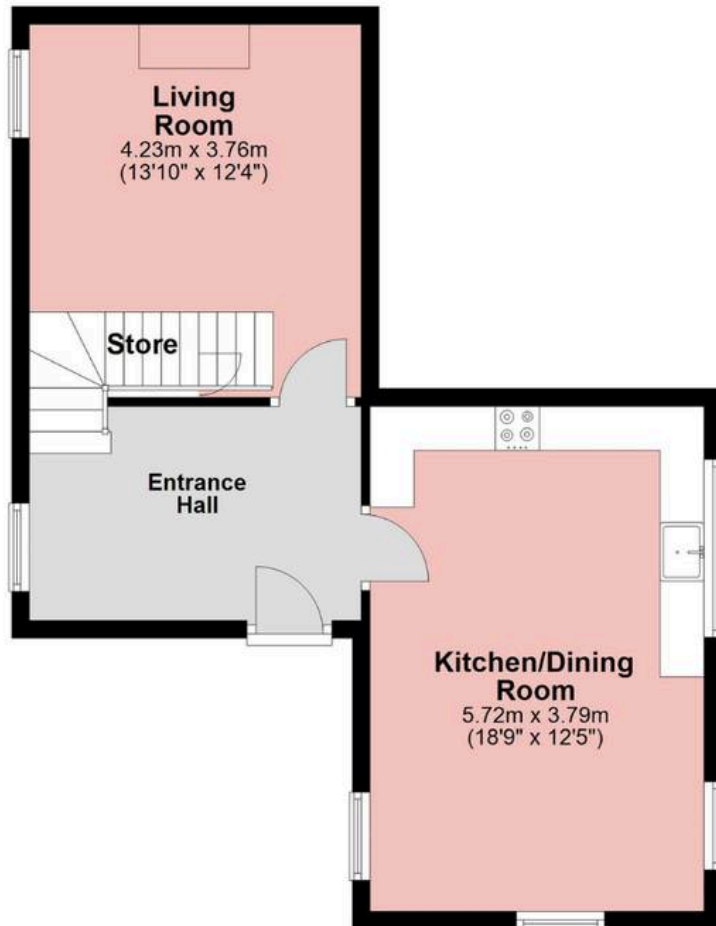
Approx. Gross Internal Area 80.8 Sq M (870.0 Sq Ft)



PERIOD
HOMES

Ground Floor

Approx. 47.4 sq. metres (509.7 sq. feet)



First Floor

Approx. 33.5 sq. metres (360.3 sq. feet)



Measurements are approximate and for illustration purposes only. While we do not doubt the accuracy and completeness, we advise you conduct a careful independent assessment of the property to determine monetary value

© @modephotouk www.modephoto.co.uk

About Us

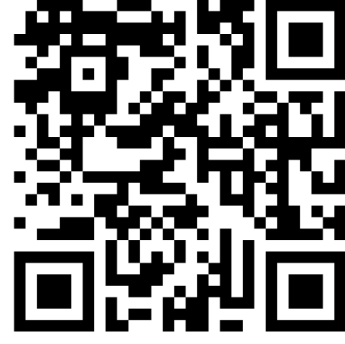
From charming cottages to country estates, all our homes have a story to tell... 'Period Homes' is one of a kind, an agency dedicated to the sale of character and period properties across Essex.

If you would like to buy a period home but you have a modern home to sell first, we can assist via our sister company, Walkers, which just so happens to have been voted Britain's Best Estate Agency in the British Property Awards. That way, both elements of your move are in the very best of hands.

Get In Touch



Browse Properties



PERIOD
HOMES



Psst... Have you heard of discreet marketing?

Many people lose out on their dream home to someone in a better position.

Often, it is because they have delayed putting their house on the market, preferring to find somewhere first and then sell.

That is why we have innovated a totally unique and highly confidential moving home solution to put you in a competitive position.

Let us find you a buyer without any advertising or pressure and without the neighbours knowing.

Your secret is safe with us...

Get in touch for a complimentary valuation.

Looking To Sell Or Let Your Home?

Book your free valuation to see how much your home is worth.

Contact Us

01277 288000



Our Website

periodhomes.co.uk



Our Address

Eaton House

High Street

Ingestone

CM4 9DW

