



FREEHOLD

House - End Terrace

40 BROOKEND ROAD, SIDCUP, DA15 8BE

Asking price

£525,000

FEATURES

- Three Bedroom End of Terrace Home
- Recently Renovated Throughout
- Stunning and Modern Kitchen/Dining Room
- NO FORWARD CHAIN
- Driveway To Front
- Good Size Rear Garden With Side Access
- Double Glazing and Gas Central Heating
- Internal Viewing Highly Recommended



3 Bedroom House - End Terrace located in Sidcup

Located within a popular location close to both Sidcup and New Eltham Train Stations we are pleased to offer for sale this immaculately presented three bedroom end of terraced home. Having been thoughtfully renovated the accommodation on offer comprises entrance porch and hall, living room, extended open plan kitchen/dining room with a newly fitted kitchen, three family sized first floor bedrooms and a contemporary three piece bathroom. The rear garden benefits from side access and there is a generously sized driveway to the front for parking. Additional points of note include double glazing, gas central heating and no forward chain.

Call us on

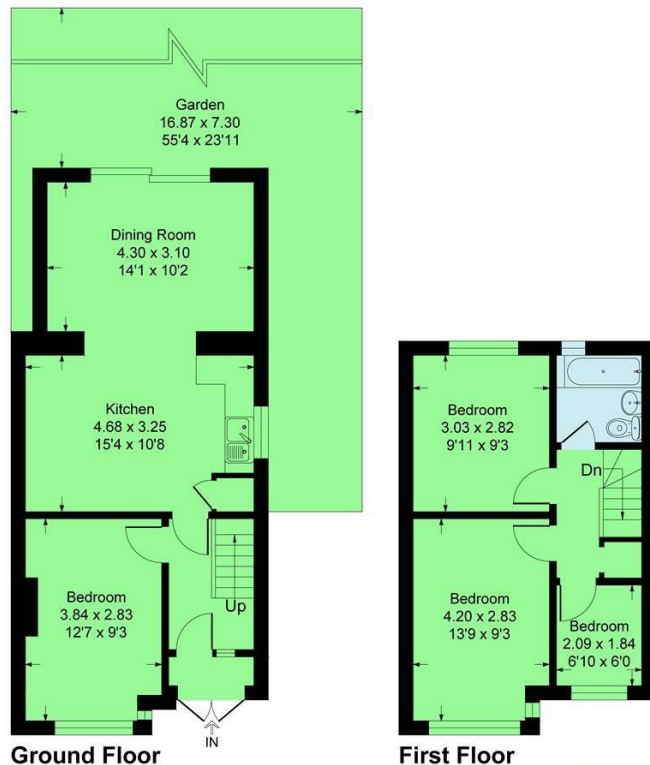
020 8301 5511

sales@westwoodpropertyservices.co.uk

Council Tax Band

Brookend Road, DA15

Approximate Gross Internal Area 104.6 sq m / 1127 sq ft



This plan is for layout guidance only. Not drawn to scale unless stated. Windows and door openings are approximate. Whilst every care is taken in the preparation of this plan, please check all dimensions, shapes and compass bearings before making any decisions reliant upon them.
Produced By Planpix



Energy Efficiency Rating		Current	Potential
Very energy efficient - lower running costs			
(92 plus) A			
(81-91) B			
(69-80) C			80
(55-68) D		67	
(39-54) E			
(21-38) F			
(1-20) G			
Not energy efficient - higher running costs			
England & Wales		EU Directive 2002/91/EC	

Agents Note: Whilst every care has been taken to prepare these particulars, they are for guidance purposes only. All measurements are approximate and are for general guidance purposes only and whilst every care has been taken to ensure their accuracy, they should not be relied upon and potential buyers are advised to recheck the measurements.

