



COLEWATERHOUSE

TAURUS



Apt 1004 Millennium Tower, The Quays, Salford, M50 3SB

Jordan Fishwick presents this two bedroom apartment found on the 10th floor, in Millennium Tower, Salford Quays. The property comprises of an entrance hall leading to a large living room with balcony, high gloss kitchen with fitted appliances, fridge/freezer, dishwasher and oven and hob. Double bedrooms. Luxury bathroom suite with fitted mirror, shower and tiled walls. Great views from the balcony. Parking included. EWS-1 Mortgage buyers invited

Price £230,000

Viewing arrangements

Viewing strictly by appointment through the agent

245 Deansgate, Manchester, M3 4EN 0161 833 9499 opt 3

The Building

With excellent transport links nearby, including easy access to Manchester city centre, this apartment is perfectly situated for those who wish to enjoy the best of urban living while still having a tranquil home to return to. This property is not just a place to live; it is a lifestyle choice that offers both convenience and comfort. Do not miss the opportunity to make this exceptional apartment your new home.

Lounge

13'1" x 13'8"

Open plan lounge, laminate flooring, spot lighting, electrical heating, TV access points, access to the balcony

Kitchen

10'5" x 7'6"

Range of wall and base units with complimentary kitchen worktop, integrated fridge/freezer, oven/hob, extractor fan and dishwasher.

Bedroom One

7'5" x 10'11"

Fitted carpets, ceiling to floor UPVC window, electrical power sockets, electrical heating, spot lighting.

Bathroom

6'6" x 8'4"

Part tiled bathroom, shower attachment with mixer, low level w.c, hand wash basin, extractor fan, spot lighting, fitted mirror, heated towel rail.

Bedroom Two

11'10" x 10'9"

Fitted carpets, ceiling to floor UPVC window, electrical power sockets, electrical heating, spot lighting, access to the en-suite.

En-Suite

7'2" x 9'7"

shower cubicle with shower attachment and mixer, part tiled, low level w.c, hand wash basin, extractor fan, spot lighting. heated towel rail.

Additional Information

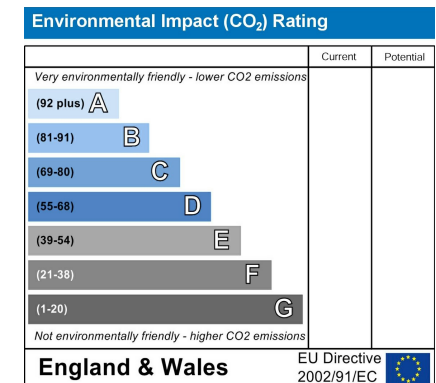
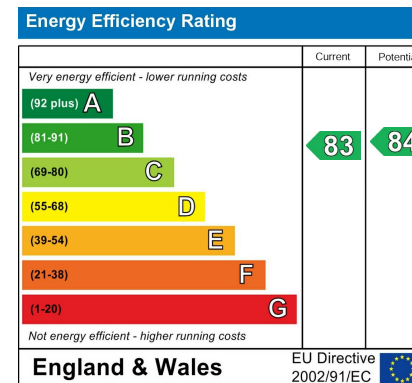
Annual Service Charge- £4,001.00
Ground Rent- £475.98 10 year review period.
Leasehold- 150 years from 2005.
Council Tax Band- D
EPC - B

Agents Notes

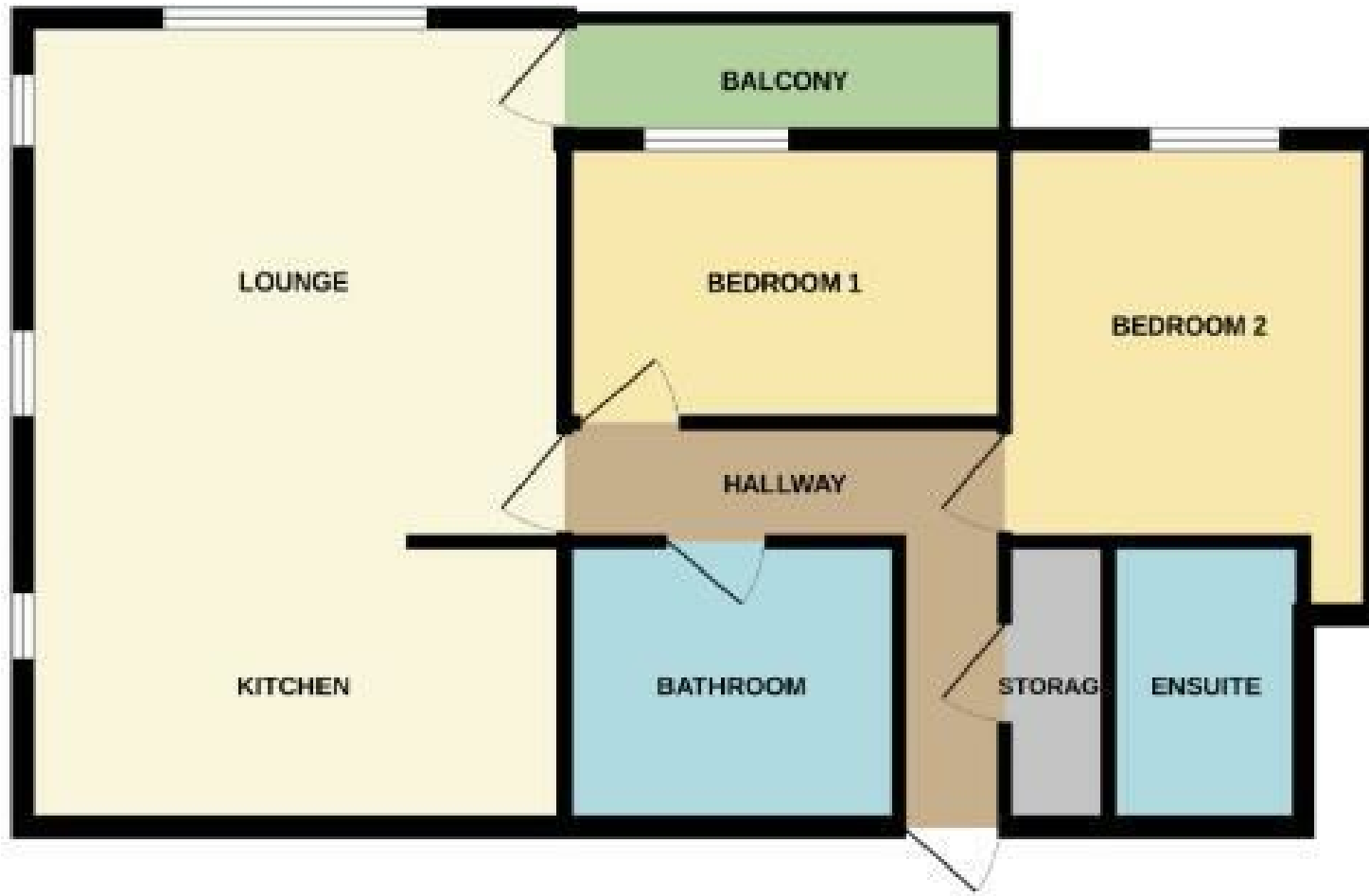
To be able to purchase a property in the United Kingdom all agents have a legal requirement to conduct Identity checks on all customers involved in the transaction to fulfil their obligations under Anti Money Laundering regulations. We outsource this check to a third party and a charge will apply. Ask the branch for further details.

Disclaimer

IMPORTANT NOTE TO PURCHASERS: The lease, ground rent and service charges should all be checked via the solicitors for clarification. We endeavour to make our sales particulars accurate and reliable, however, they do not constitute or form part of an offer or any contract and none is to be relied upon as statements of representation or fact. The services, systems and appliances listed in this specification have not been tested by us and no guarantee as to their operating ability or efficiency is given. All measurements have been taken as guide to prospective buyers only, and are not precise. If floor plans were included, these may not be to scale and accuracy is not guaranteed. If you require clarification or further information on any points, please contact us.







These particulars are believed to be accurate but they are not guaranteed and do not form a contract. Neither Jordan Fishwick nor the vendor or lessor accept any responsibility in respect of these particulars, which are not intended to be statements or representations of fact and any intending purchaser or lessee must satisfy himself by inspection or otherwise as to the correctness of each of the statements contained in these particulars. Any floorplans on this brochure are for illustrative purposes only and are not necessarily to scale.

Offices at: Chorlton, Didsbury, Disley, Hale, Glossop, Macclesfield, Manchester Deansgate, Manchester Whitworth Street, New Mills, Sale, Wilmslow and Withington

245 Deansgate, Manchester, M3 4EN

0161 833 9499 opt 3

manchester@jordanfishwick.co.uk

www.jordanfishwick.co.uk

