

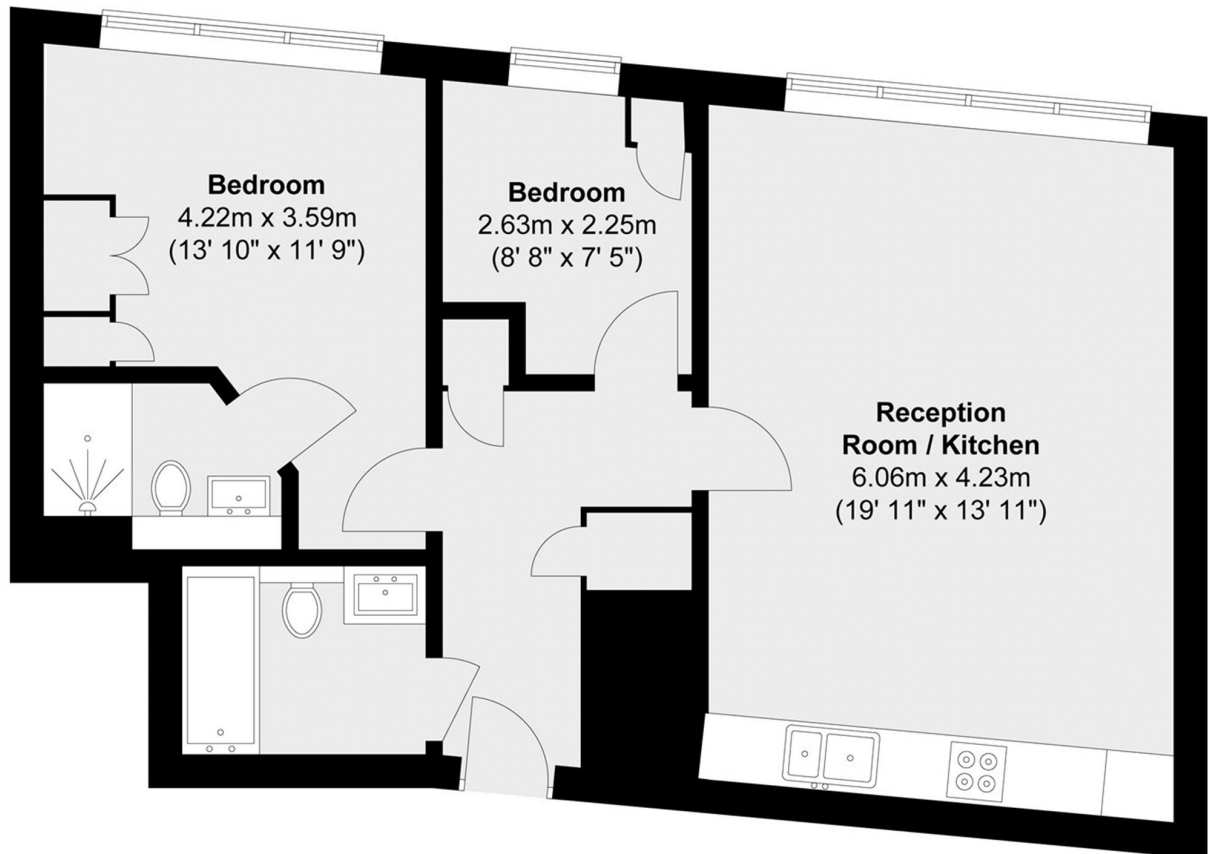


ST. GEORGE WHARF, SW8

£2,950 pcm

This stylish two bedroom apartment in the sought after St George Wharf development. This bright, open-plan living space fully-integrated kitchen and the year-round comfort of air conditioning.

- Two Bedroom Apartment
- Open Plan Reception
- Integrated Kitchen
- Family and Ensuite
- 24 Hour Concierge
- City Views



Total area (approx.) : 60.6 sq. m (652 sq. ft)

LiFE RESIDENTIAL

11 Flagstaff House, London,
SW8 2LZ

Sales: 020 7476 1408

Lettings: 020 7582 7989

Energy Rating: B. We aim to make our particulars both accurate and reliable. However they are not guaranteed; nor do they form part of an offer or contract. If you require clarification on any points then please contact us, especially if you're traveling some distance to view. Please note that appliances and heating systems have not been tested and therefore no warranties can be given as to their good working order.