



48, The Ridings, Bicton Heath, Shrewsbury, SY3 5ET
£750 Per Month



48, The Ridings, Bicton Heath, Shrewsbury, SY3 5ET

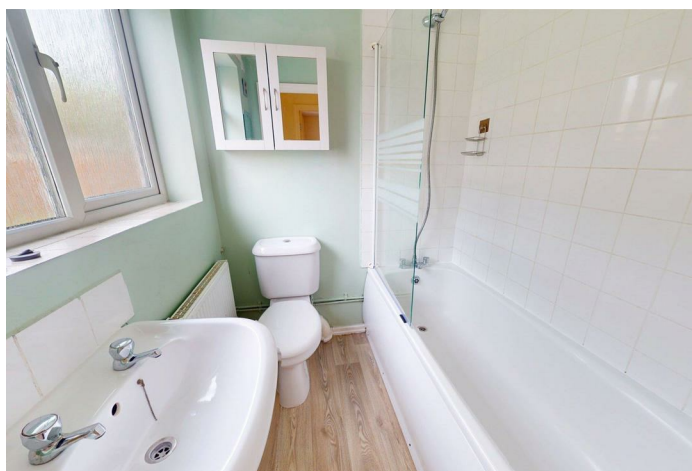
£750 Per Month

VIRTUAL TOUR AVAILABLE: Modern two bedroom terraced house benefitting from a new kitchen on the western outskirts of Shrewsbury, close to Royal Shrewsbury Hospital. Includes residents parking and a rear garden, including a shed.

Available: 14/08/24

Description

Comprising: Entrance hall, bathroom with shower, double bedroom, open plan living room including double doors to rear, new kitchen including freestanding cooker, stairs to first floor, further double bedroom. Gas central heating, double glazing. Rear garden including shed. Secure Parking Space. EPC D



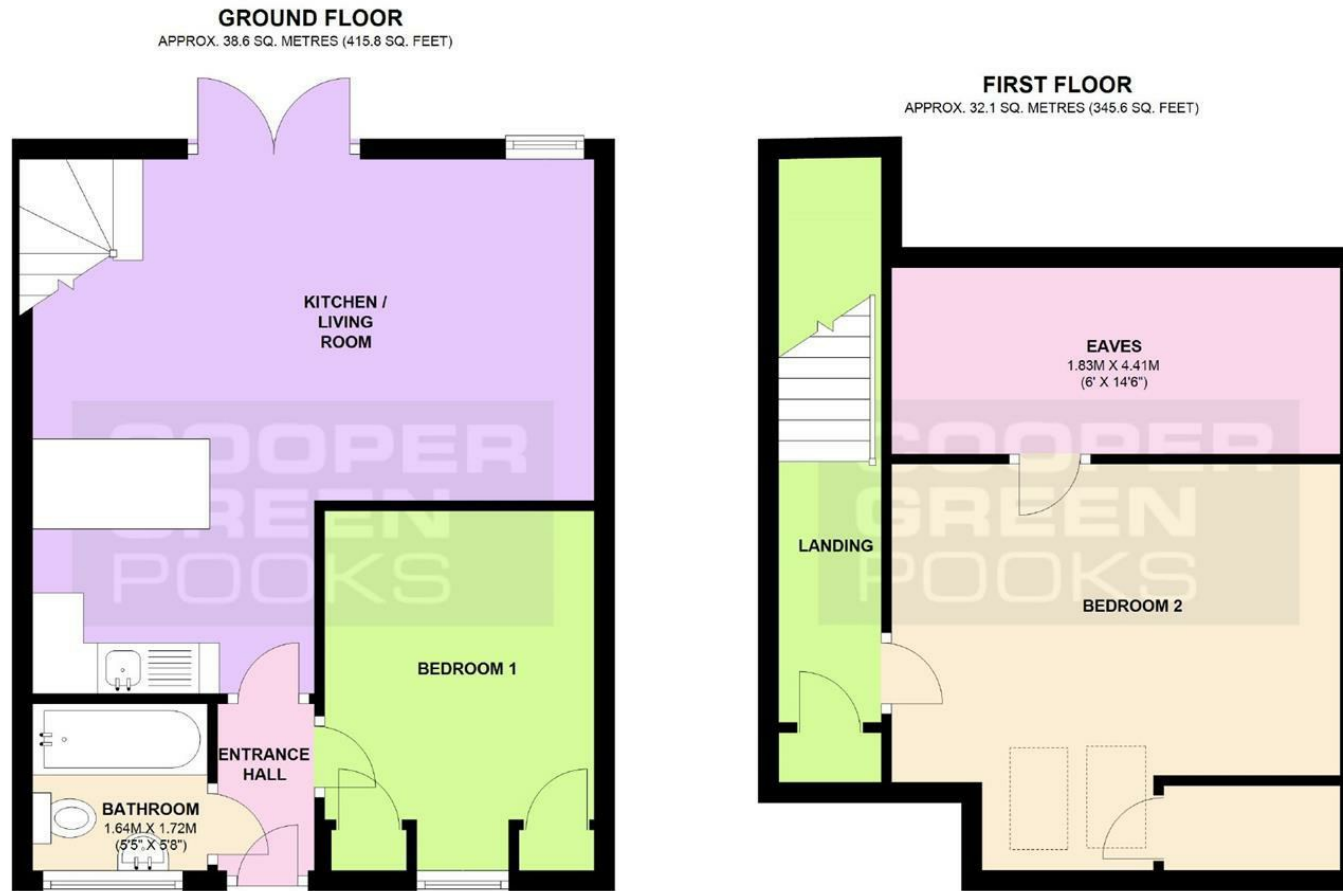
Unfurnished

Council Tax Band: A

Available: 8th May 2026

EPC: D

Floor Plans



TOTAL AREA: APPROX. 70.7 SQ. METRES (761.4 SQ. FEET)

We accept no responsibility for any mistake or inaccuracy contained within the floorplan. The floorplan is provided as a guide only and should be taken as an illustration only. The measurements, contents and positioning are approximations only and provided as a guidance tool and not an exact replication of the property.

Plan produced using PlanUp.

These particulars, whilst believed to be accurate are set out as a general outline only for guidance and do not constitute any part of an offer or contract. Intending purchasers should not rely on them as statements of representation of fact, but must satisfy themselves by inspection or otherwise as to their accuracy. No person in this firm's employment has the authority to make or give any representation or warranty in respect of the property.