



37 Linn Crescent

Kirkfieldbank

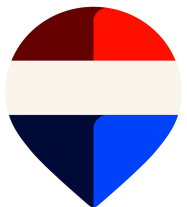
Deceptively spacious, three bedroom, semi-detached villa situated in the rural village of Kirkfieldbank, nestled in the ever popular Clyde Valley.

The property offers generous accommodation over two levels with the ground floor comprising; entrance hallway, spacious lounge with French Doors opening to a rear patio and fitted kitchen with a good range of base and wall mounted storage with ample space for slot-in appliances.

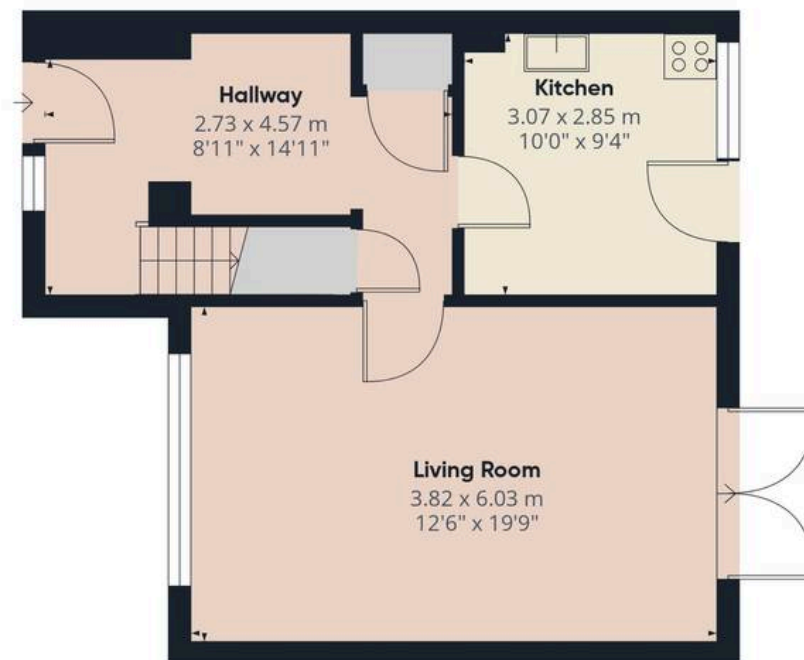
On the first floor there are three generously proportioned bedrooms and a family bathroom with suite comprising, W.C, wash hand basin and bath with electric shower over.

Externally there is a private garden to the rear which is split between patio and lawn, bound by a timber fence. A garden shed provides storage.

- Semi Detached Villa
- Three Bedrooms
- Private Rear Garden
- Garden Shed





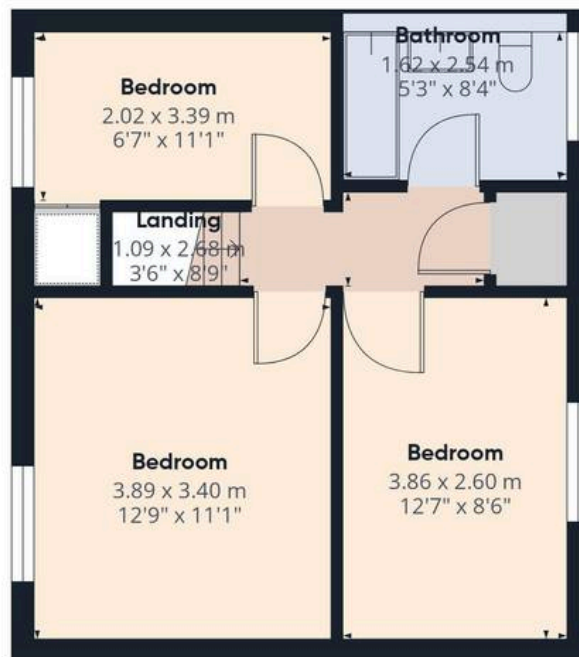


Floor 0

Approximate total area⁽¹⁾

83.2 m²

897 ft²



Floor 1



(1) Excluding balconies and terraces

Calculations reference the RICS IPMS 3C standard. Measurements are approximate and not to scale. This floor plan is intended for illustration only.

GIRAFFE360



REMAX Clydesdale

Remax, 2 High Street - ML11 7EX

01555 666990

lanark@remax-scotland.homes

www.remax-scotland.homes/estate-agents/clydesdale

These particulars are prepared by us on the basis of information provided by our clients. We have not tested the electrical system, appliances or heating system. All sizes are recorded by laser to give an indicative, approximate size only. Prospective purchasers should make their own enquiries, no warranty is given or implied. This schedule is not intended to, and does not form any contract. Anti-Money Laundering Regulations - Purchasers will be asked to produce identification documentation at a later stage and we would ask for your co-operation in order that there will be no delay in agreeing the sale. NOTING INTEREST If you are interested in this property please ask your solicitor to notify us. This is referred to as "noting interest" and will ensure that you are informed of any