

*Susan Payne*  
PROPERTY

PROUDLY PRESENT FOR SALE

# Flaxfield

Main Road, Havenstreet, Isle of Wight PO33 4DL



Beautifully presented detached three-bedroom home with generous gardens, countryside views, spacious living accommodation, useful outbuilding and a peaceful village setting in sought-after Havenstreet.

- Beautifully presented detached home in a village setting
- Spacious triple-aspect lounge/diner with garden access
- Useful detached outbuilding with store and utility area
- Elevated countryside views enjoyed from the second bedroom
- Improved throughout the seven years of ownership
- Three well-proportioned bedrooms and a modern bathroom
- Modern kitchen upgraded by the current owner
- Generous rear garden surrounded with mature trees
- Off-road parking with an attractive landscaped approach
- Conveniently set in popular Havenstreet

For more information and to arrange a viewing, please contact Susan Payne Property on **01983 566244**.

Preview our newest listings first!  
Search on Facebook for:  
**Susan Payne Property Home Hunters**

**rightmove**

**Zoopla**

**OnTheMarket.com**

**PrimeLocation**

**The Property Ombudsman**

You can also email us at [sales@susanpayneproperty.co.uk](mailto:sales@susanpayneproperty.co.uk), visit our website at [susanpayneproperty.co.uk](http://susanpayneproperty.co.uk) or visit us at East Quay, Wootton Bridge, Isle of Wight PO33 4LA. You can also follow us on Facebook, Twitter and Instagram.



Thoughtfully upgraded during the current owner's seven years of ownership, this attractive detached home combines generous living space with a wonderfully peaceful setting on the edge of Havenstreet. Beautifully presented throughout, the property offers bright and spacious accommodation centred around an impressive triple-aspect sitting and dining room, complemented by a stylish modern kitchen and three comfortable first-floor bedrooms. Outside, the home continues to impress with a generous rear garden enjoying a delightful wooded backdrop and an excellent degree of privacy. A particularly useful detached outbuilding provides flexible ancillary space, currently arranged as a practical store to the front and a separate utility area to the rear, making it ideal for hobbies, storage or everyday family life.

Surrounded by rolling countryside and miles of scenic footpaths and bridleways, Havenstreet offers a wonderfully peaceful setting where rural living and everyday convenience exist in perfect harmony. The village enjoys a welcoming community atmosphere, with local amenities including a community centre, recreation ground, milk shed selling local produce and the popular White Hart pub, renowned for its excellent food. The nearby Isle of Wight Steam Railway provides one of the Island's most iconic attractions, offering nostalgic journeys through beautiful countryside aboard lovingly restored steam trains. Perfectly positioned between Ryde and Newport, Havenstreet also enjoys easy access to an extensive range of independent shops, cafés, restaurants, supermarkets, sandy beaches, mainland ferry links, cinemas and leisure facilities, making it an ideal location for those seeking both tranquillity and connectivity.

### **Welcome to Flaxfield**

Set back from the road behind a generous frontage, Flaxfield immediately enjoys an appealing sense of privacy and space. Steps lead down from the driveway, through mature planting to the welcoming entrance, creating an attractive first impression before stepping inside.

### **Porch**

A practical enclosed porch provides a useful space for coats and shoes before opening into the welcoming entrance hall.

### **Entrance Hall**

The central hallway offers access to the ground floor accommodation, with stairs rising to the first-floor and convenient storage built-in below.

### **Cloakroom**

Fitted with a WC and wash hand basin, providing a practical addition for visiting guests.

### **Lounge/Diner**

Occupying the full depth of the property, this impressive triple-aspect reception room offers clearly defined sitting and dining areas whilst remaining wonderfully open and sociable. A contemporary tiled fireplace provides an attractive focal point, while large windows flood the room with natural light. Sliding patio doors open directly onto the rear terrace, seamlessly connecting the indoor living space with the garden beyond. A door from the dining space conveniently connects to the kitchen.

### **Kitchen**

Positioned to the rear of the property, the kitchen has been stylishly updated with fresh white shaker-style cabinetry, warm wooden worktops and metro-tiled splashbacks. Thoughtfully designed to maximise both storage and workspace, it enjoys lovely garden views and provides direct access to the side path, making it perfectly suited to everyday family life and summer entertaining.

### **First-Floor Landing**

The generous landing creates an open feel to the first-floor whilst providing access to all three bedrooms, the family bathroom and with a hatch for access to the loft.



### **Primary Bedroom**

A generous double bedroom positioned to the front of the property, offering ample space for freestanding furniture.

### **Bedroom Two**

A spacious double bedroom overlooking the rear garden, enjoying a peaceful outlook towards mature trees and the surrounding countryside beyond.

### **Bedroom Three**

A comfortable bedroom which would equally serve as a dressing room or home office.

### **Family Bathroom**

Well-appointed with a modern white suite comprising a panelled bath with shower over, wash hand basin and WC, complemented by contemporary tiling and natural light from two windows.

### **Outbuilding - Utility**

Accessed via a door from the side path, the front portion of the outbuilding is arranged as a practical utility room with space for laundry appliances, additional storage and everyday household tasks.

### **Outbuilding - Store**

A doorway leads from the utility area to this versatile storage area, which is ideal for bicycles, gardening equipment, tools or workshop space.

### **Outside**

To the front, a large block paved driveway provides plenty of private parking, surrounded by well-established planting which enhances privacy. The rear garden is a fantastic feature - a generous paved terrace provides an ideal setting for outdoor dining whilst overlooking the lawn, mature shrubs and established trees beyond. Backing onto beautiful mature trees, the garden enjoys an exceptional sense of privacy together with an attractive leafy outlook. It is a wonderfully peaceful setting that perfectly complements the home's village location.

### **In Summary**

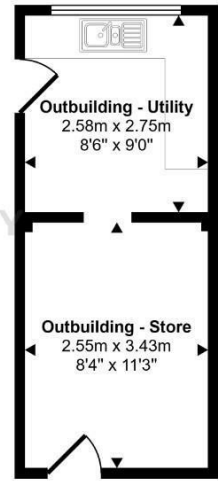
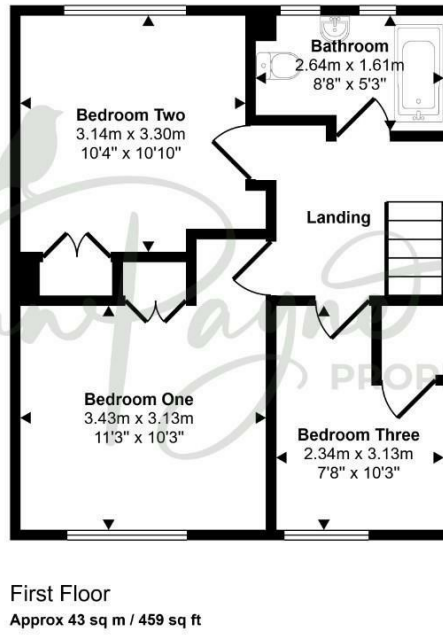
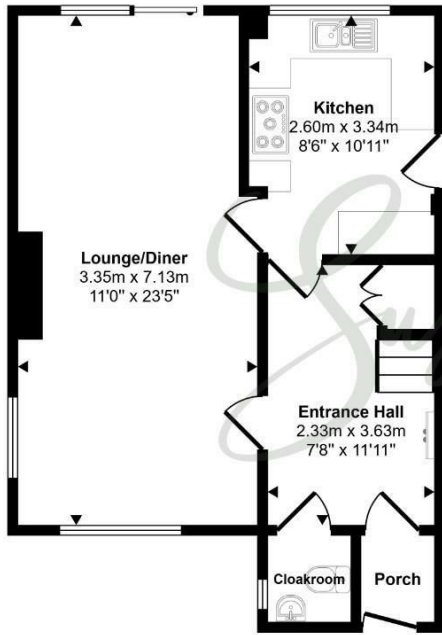
Combining spacious family accommodation, tasteful modern improvements and a glorious garden, Flaxfield presents a fantastic opportunity to enjoy village life without compromising on convenience. With three bedrooms, generous reception space, a stylish kitchen, useful outbuilding and a peaceful countryside setting midway between Ryde and Newport, this is a home perfectly suited to families, professional couples or anyone seeking a quieter pace of life. An early viewing with the sole agent Susan Payne Property is highly recommended.

### **Additional Details**

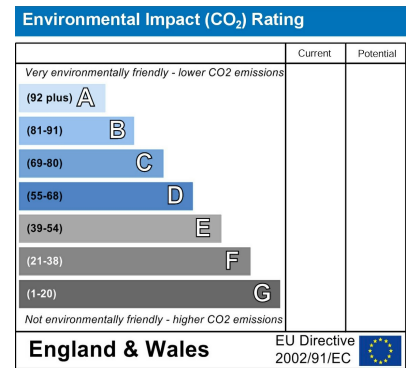
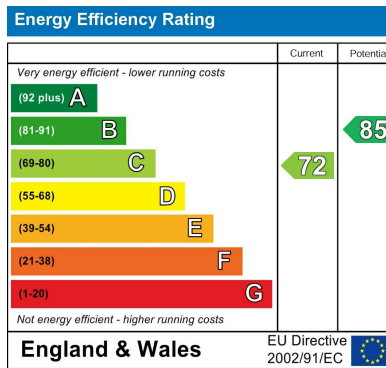
Tenure: Freehold | Council Tax Band: E (Approx £3162.85 for 2026/27) | Services: Mains water, gas, electricity and drainage



Approx Gross Internal Area  
103 sq m / 1111 sq ft



This floorplan is only for illustrative purposes and is not to scale. Measurements of rooms, doors, windows, and any items are approximate and no responsibility is taken for any error, omission or mis-statement. Icons of items such as bathroom suites are representations only and may not look like the real items. Made with Made Snappy 360.



**Agent Notes:**

The information provided about this property does not constitute or form part of an offer or contract, nor may it be regarded as representations. All interested parties must verify accuracy and your solicitor must verify tenure/lease information, fixtures and fittings and, where the property has been extended/converted, planning/building regulation consents. All dimensions are approximate and quoted for guidance only and their accuracy cannot be confirmed. Reference to appliances and/or services does not imply that they are necessarily in working order or fit for the purpose. Susan Payne Property Ltd. Company no.10753879.