



New Drum Street, E1

£650,000

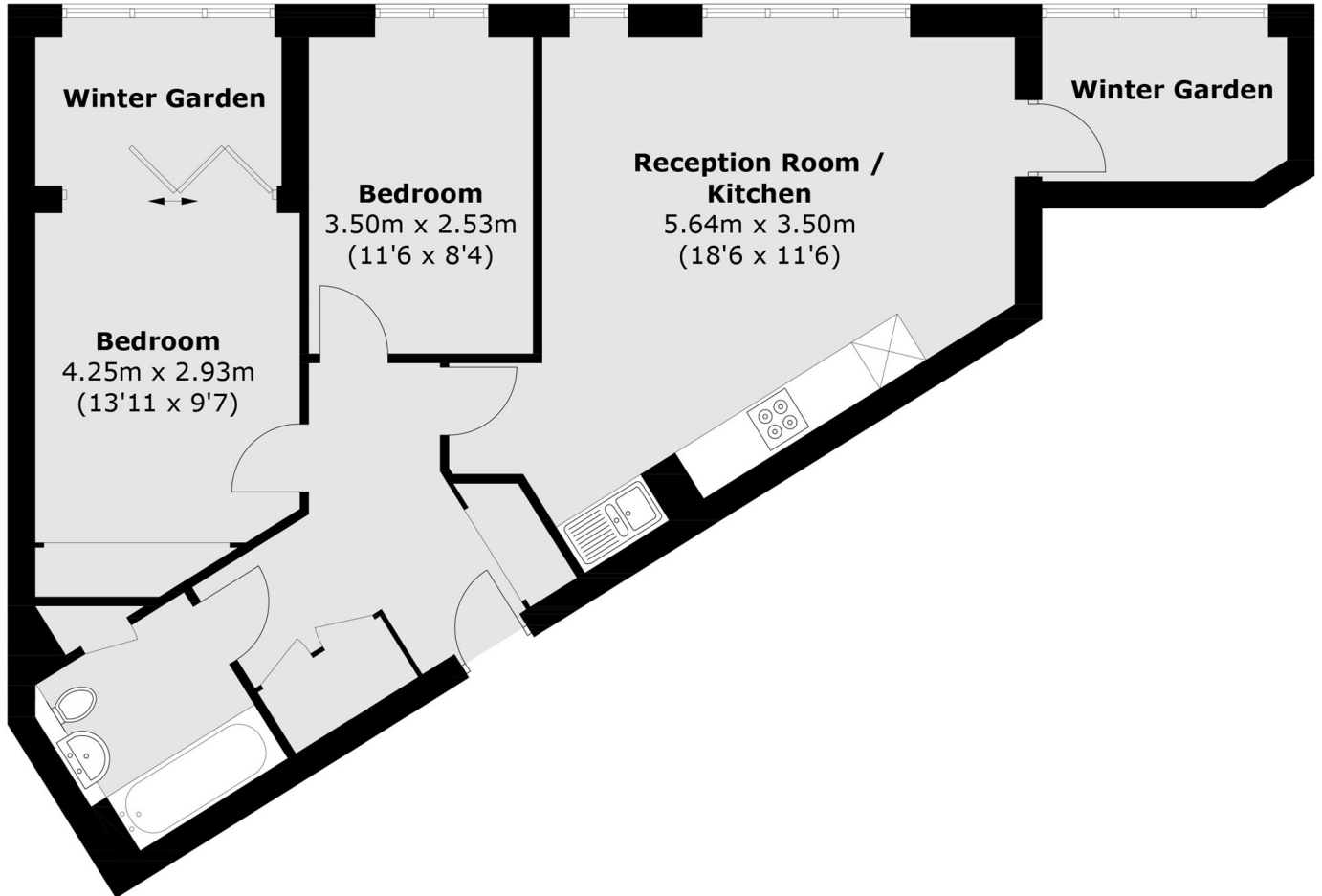
A well-presented two-bedroom apartment located on the sixth floor of Wiverton Tower. The property features a spacious open plan living area with a modern kitchen, leading onto a practical winter garden. There are two generously sized double bedrooms, with the principal bedroom benefiting from access to a second winter garden. Further features include floor-to-ceiling windows, underfloor heating, and a video entry system. Residents also enjoy access to a 24-hour concierge, gym, rooftop terrace and secure bicycle storage.

Conveniently located within walking distance of the City, Spitalfields Market, Tower Bridge and Shoreditch. The property is well served by transport links, with Aldgate & Aldgate East, Tower Hill and Liverpool Street, as well as the DLR at Tower Gateway and mainline services from Liverpool Street and Fenchurch Street.

Features

- Two Double Bedrooms
- Floor To Ceiling Windows
- Secure Bicycle Storage
- Two Winter Gardens
- Underfloor Heating
- Secure Entry

New Drum Street, London, E1



Total area (approx.): 74.9 sq. m (806.2 sq. ft)
(Including Winter Garden)