



6 Wessex Close, Bedworth

Bedworth

Offers in Region of **£240,000**



**SHELDON
BOSLEY
KNIGHT**

LAND AND
PROPERTY
PROFESSIONALS

6 Wessex Close

Bedworth, Bedworth

This two bedroom semi detached bungalow is perfect for those looking for a comfortable and easy-to-maintain home. Step through the entrance hall into a spacious lounge which has a feature fire place with incorporated coal effect fire and also provides access to the conservatory a great spot to enjoy your morning coffee or unwind with a book. The modern kitchen comes fully equipped with a hob and oven. There are two bedrooms and a modern shower room. The property also benefits from gas fired central heating and double glazing.

Step outside to discover a well maintained garden, perfect for those who love a bit of outdoor living. Whether you want to potter with some plants, enjoy summer barbeques, or simply relax in the fresh air, this garden offers plenty of options. There is a garage and a driveway for additional off-road parking. This bungalow offers a fantastic combination of indoor comfort and outdoor convenience. If you're looking for a move-in ready home with plenty of appeal, this could be the perfect fit and there is also no upward chain.

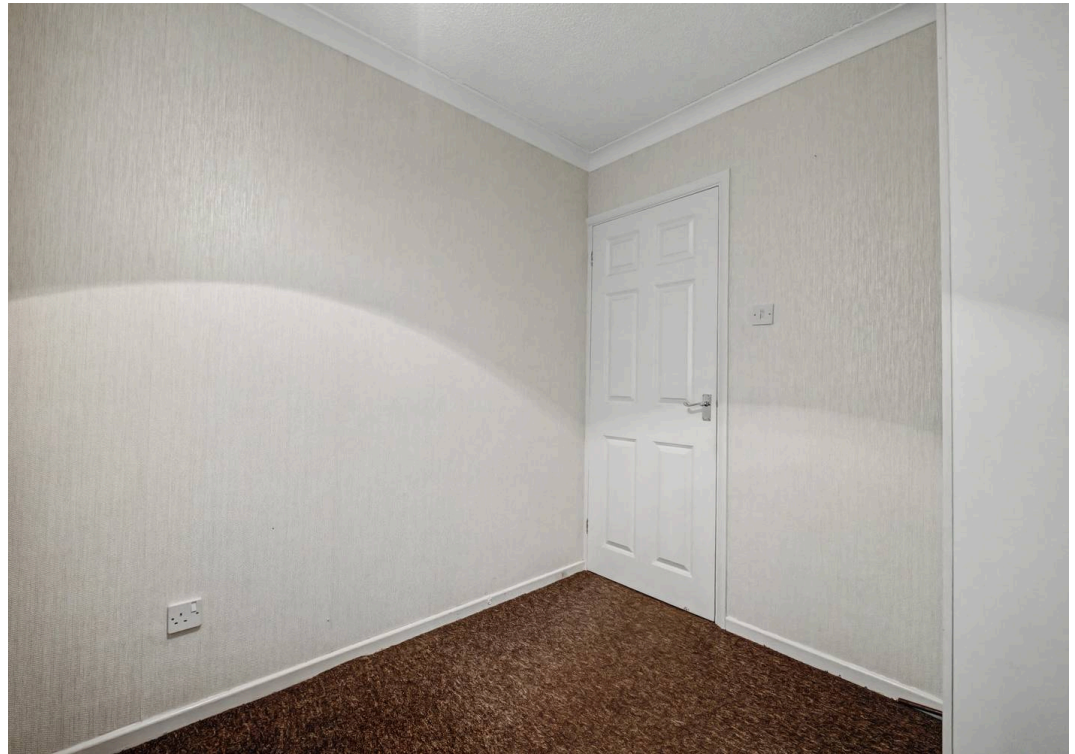
Contact Sheldon Bosley Knight on 02476 374949 or email nuneaton@sheldonbosleyknight.co.uk for more information.

Council Tax band: B

Tenure: Freehold

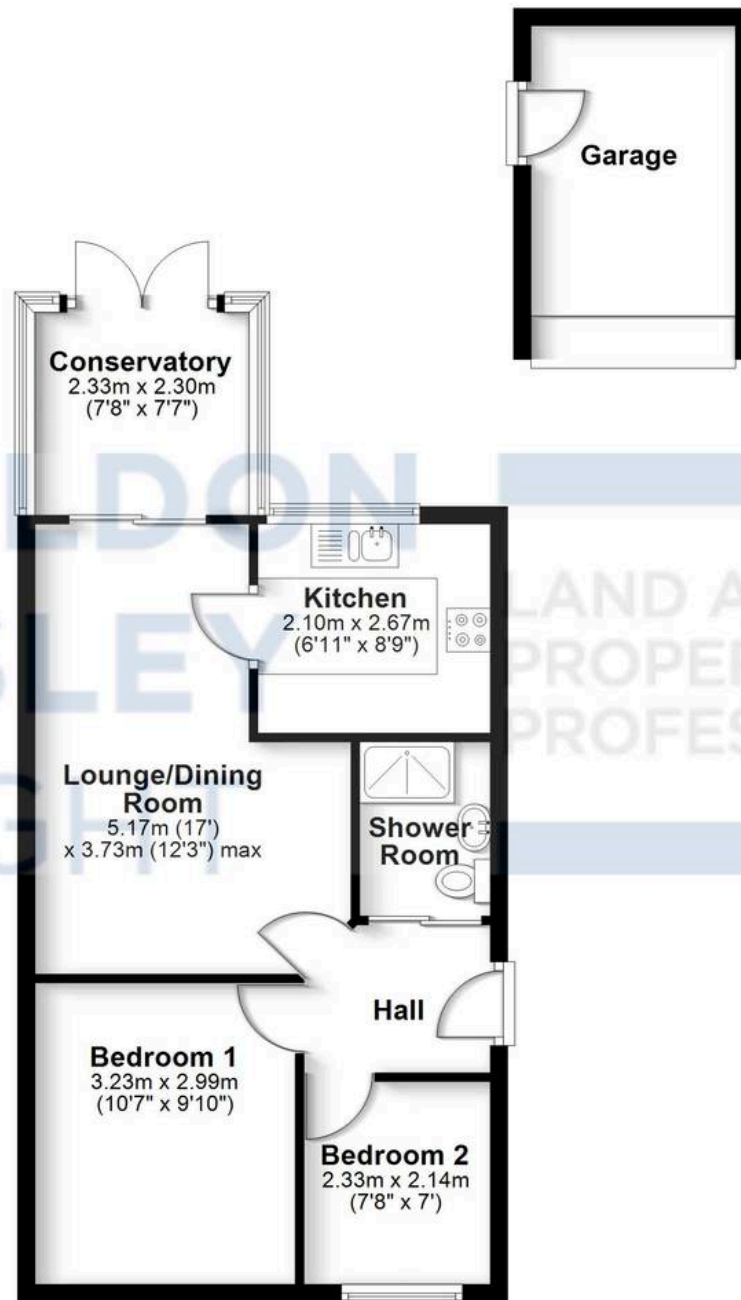
- Semi Detached Bungalow
- Entrance Hall
- Spacious Lounge
- Conservatory
- Modern Kitchen with Hob & Oven





Ground Floor

Approx. 58.3 sq. metres (627.6 sq. feet)



Total area: approx. 58.3 sq. metres (627.6 sq. feet)

All efforts have been made to ensure the measurements are accurate on this floor plan, however these are for guidance purposes only.
Plan produced using PlanUp.



Sheldon Bosley Knight Nuneaton

Sheldon Bosley Knight, 39 Newdegate Street, Nuneaton – CV11 4ER

02476374949 • nuneaton@sheldonbosleyknight.co.uk • www.sheldonbosleyknight.co.uk/