



GOWAN AVENUE, SW6

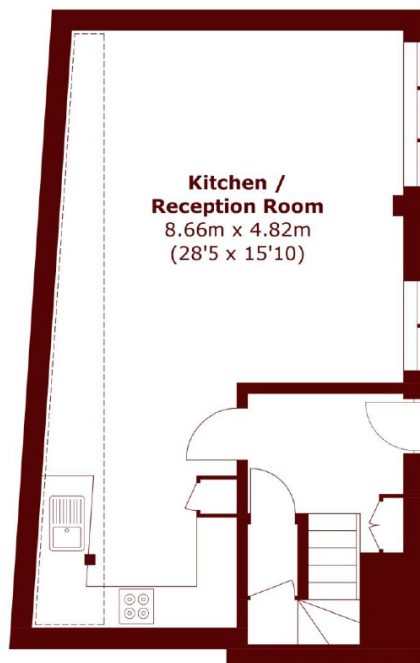
£650,000

The house is arranged over two floors with a bright, modern kitchen and a 29ft open plan living dining room area. On the first floor is a large double bedroom with fitted wardrobes, accompanied by an adjacent bathroom

One bedroom house
Freehold

Secure gated development
Allocated parking space

STEP INSIDE GOWAN AVENUE



Ground Floor



First Floor

Total area (approx.): 72.28 sq. m (778 sq. ft)

Bishops Park
020 7993 9888

Energy Rating: E We aim to make our particulars both accurate and reliable. However, they are not guaranteed; nor do they form part of an offer or contract. If you require clarification on any points then please contact us, especially if you're traveling some distance to view. Please note that appliances and heating systems have not been tested and therefore no warranties can be given as to their good working order

**MARSH &
PARSONS**