



24 Mytchett Heath, Mytchett, Camberley, GU16 6DP

A spacious three-bedroom mid terrace cottage, with enclosed patio garden, sunroom and garage overlooking beautiful courtyard gardens.

Entrance Hall

The Property

**Downstairs
Shower Room**

24 Mytchett Heath is a beautifully presented three- bedroom cottage with sunroom, enclosed patio garden and garage.

Sitting Room

Upon entering the property, you are welcomed into a bright and spacious hallway with a beautiful arched window allowing light to flood in. The hallway leads through to the useful downstairs shower room and through to the large, light and airy open plan living and dining room.

Dining Room

Kitchen

The living room features a modern electric fireplace and boasts views over the beautiful estate grounds. The dining room is the perfect space for entertaining with French doors leading through to the sunroom which has direct access to the enclosed patio garden looking out over undisturbed woodland.

**Three Double
Bedrooms**

Bathroom

Garage

The property features a contemporary, fully fitted kitchen with a range of fitted units and integrated appliances such as hob, oven, fridge/freezer and dishwasher.

Patio Garden

**150year Lease
(from 1995)**

Upstairs there are three double bedrooms, all with built in storage, with bedroom one benefiting from access to the upstairs jack and jill style bathroom.

No Ground Rent

55+ Age Covenant.

There is electric storage heating and double glazing throughout and a partially boarded loft, accessed via a folding ladder, provides useful extra storage.

A single garage, with light and power, is located in a block nearby.

Guide Price: £365,000 (Leasehold)

Directions to Mytchett Heath

From the M3 exit at Junction 4 take the A331 to Aldershot and after about a mile take the turning left signposted Mytchett and onto the Coleford Bridge Road.

At the roundabout take the 2nd exit onto the B3411 Mytchett Road and at the next roundabout take the 1st exit onto Mytchett Place Road. Cross over the railway line and canal and in about fifty metres turn left into Mytchett Heath.

Please Note: Upon resale of the property, Cognatum Estates management company charge £500 plus VAT for the leasehold pack, payable by the vendor.

For viewings please call the Estate Manager on 01252 513 986 / 07384 110 449 (Mon-Fri 9am-5pm)



Sitting Room



Dining Room



Kitchen



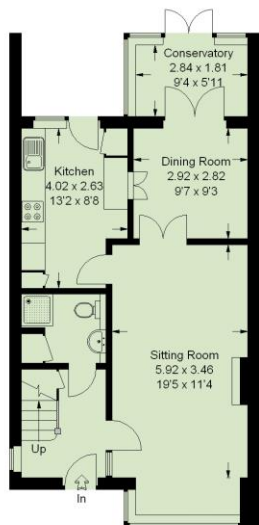
Bedroom



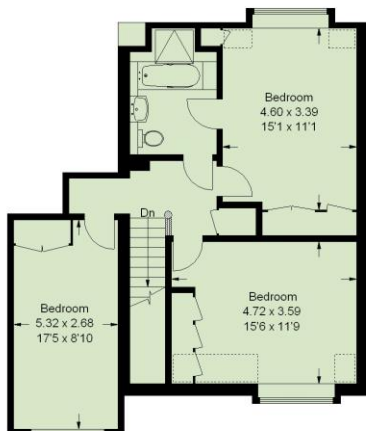
Bedroom



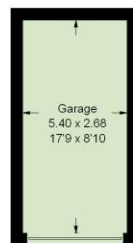
Sun Room



Ground Floor



First Floor



Garage

(Not Shown In Actual Location/Orientation)



Rear Garden

Approximate Gross Internals: 129 m² / 1388 ft²

Service Charge: £7708 pa

Energy Performance Rating: F

Council Tax Band: G

These particulars are intended to give a fair description of the property for the guidance of interested parties. They do not constitute any part of an offer or contract. All descriptions, dimensions, distances, orientations, reference to condition and necessary permissions for use and occupation and other statements are given in good faith; interested parties must satisfy themselves on the correctness of each element. The services provided have not been tested by the Agents. No person in the employment of the vendor's Agents has any authority to make or give any representations or warranties whatsoever in relation to this property nor to enter into any contract on behalf of the vendor. Photographs may show general view of retirement estate.

Mytchett Heath

Mytchett Heath enjoys a rather idyllic setting in deepest Surrey, bordered by natural woodland on one side, the restored Basingstoke Canal on another and the 59 acres of Frimley Lodge Park on another. As it was once the grounds of a school whose head gardener had a passion for unusual and exotic trees, these specimens are now in their prime and, along with the lawns, heathers and rhododendrons, form the setting for the two delightful courtyards around which the properties are set.

The local village of Mytchett is within easy walking distance of the estate and there is a petrol station with an M&S Simply Food outlet, to help fuel your adventures further afield. The local towns of Camberley, Farnborough and Aldershot, which have always had strong military connections, provide excellent shopping and a variety of cultural events. In addition to the beautiful walks within the four acres of the estate's grounds, the nearby Basingstoke Canal Towpath Trail offers 33½ miles of waterside walks. There are also two golf courses and a bowling club within five miles.

Cognatum Estates Limited maintains, repairs and insures all the buildings, arranges the window cleaning and refuse collection and tends to the gardens and grounds. There is a personal alarm system in each property and resident estate managers are able to provide support and a helping hand when needed. The estate has two laundry rooms, two guest suites and a minibus for shopping trips. The cost of providing these services is shared equally between all properties.

Services and Amenities at a Glance



RESIDENT
ESTATE
MANAGER



GARDENER



GUEST
SUITE



MINIBUS
SERVICE



LAUNDRY
FACILITY



Mytchett Heath



The Basingstoke Canal



Kingfisher on the Quay

Cognatum Property Limited, Pipe House,
Lupton Road, Wallingford, Oxfordshire OX10 9BS

T: 01491 821170 E: property@cognatum.co.uk

www.cognatum.co.uk

Cognatum
PROPERTY

RETIREMENT IS OPTIONAL

Cognatum Estates is a not-for-profit company, limited by guarantee, which provides management services exclusively for its private estates. All Cognatum properties are sold on long leases with no ground rents and no restrictions on owning a property, except that one resident must meet the minimum age covenant for the development.

