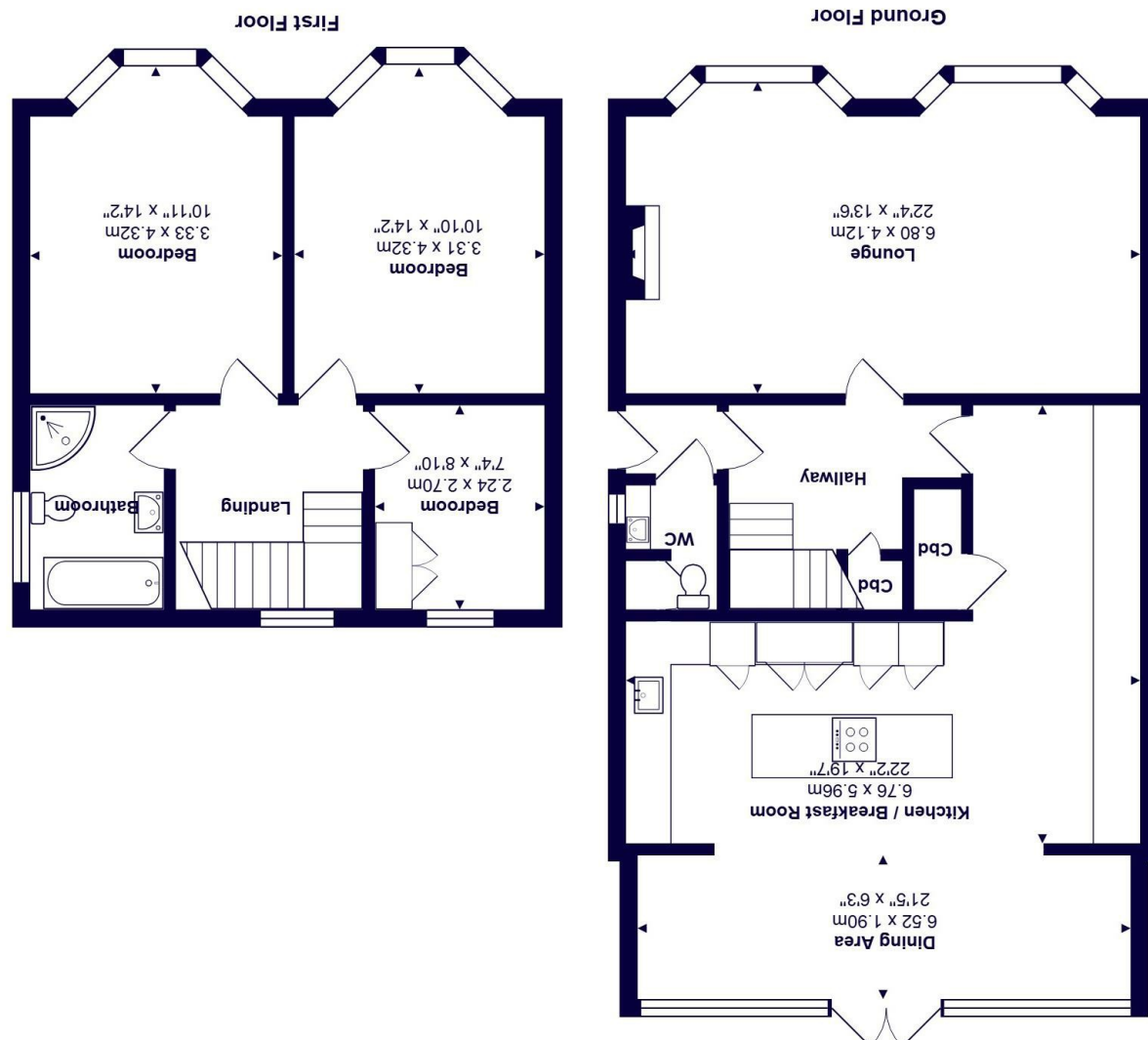




All measurements are approximate and for display purposes only.
Total Area: 126.9 m² ... 1366 ft²



20

20 Maundeville Road, BH23 2EN

£585,000

Mitchells
1963 — TODAY

A gorgeous, double fronted 1930s character house of approaching 1400 sqft, beautifully appointed inside and out with stylish fittings. Also featuring a fabulous large, well fitted kitchen / dining / family room overlooking the rear garden.

Situated in this lovely quiet road in a sought after part of the old Priory town of Christchurch with the large open park and riverside just moments away. Local shops, schools, pubs and other amenities are also close by.

- Immaculate detached home in West Christchurch
- Three first floor bedrooms
- Refitted bathroom with quality fittings
- Stunning light and airy sitting room with two feature bay windows at the front
- Wonderfully spacious kitchen/dining/living room with access to the garden
- Well enclosed rear garden with useful garden shed
- Gas central heating and UPVC double glazing
- Plenty of off road parking
- Local shops close by along with riverside walks, open space and easy access to Christchurch

EPC Rating Band: C

Council Tax Band: E

Freehold

Successful buyers will be required to complete online identity checks provided by Lifetime Legal. The cost of these checks is £45 inc. VAT per purchase which is paid in advance, directly to Lifetime Legal. This check verifies your identity in line with our obligations as stipulated by our regulatory body, HMRC

