



Springvale Cottage The Street, Witnesham

Guide Price £315,000 – £325,000





Springvale Cottage The Street

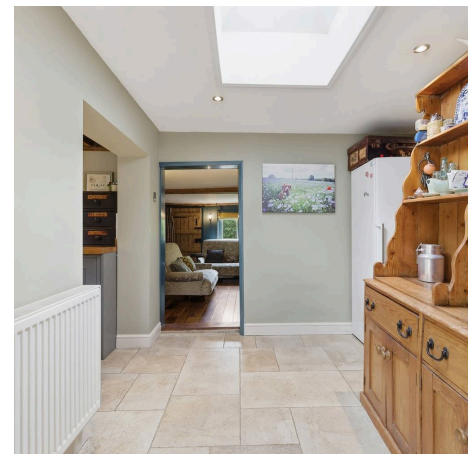
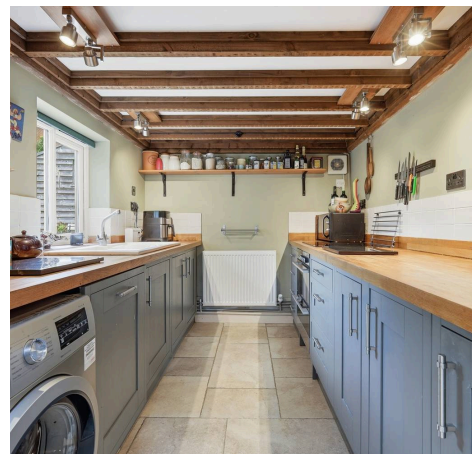
Witnesham, Ipswich

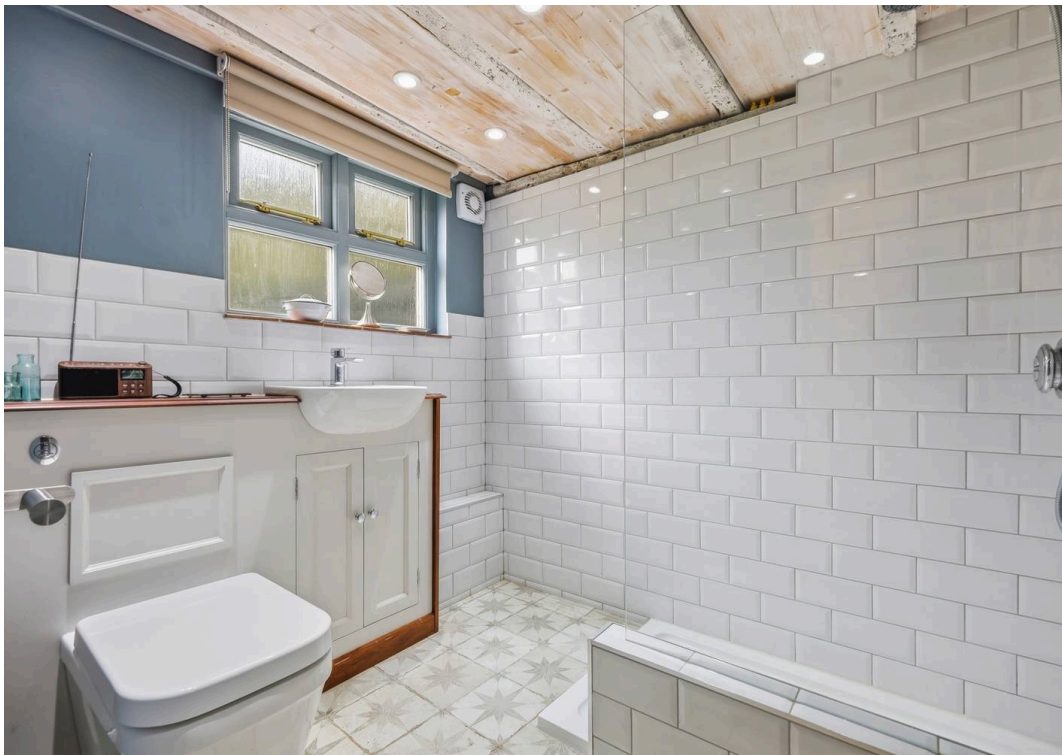
Charming 2-3 bed Suffolk cottage in Witnesham, with period features, gardens, carport and driveway. Sought-after village location near Ipswich and countryside.

Council Tax band: B

Tenure: Freehold

- Suffolk cottage dating back to circa 1713
- Wealth of exposed beams and original character features
- Stunning inglenook fireplace with wood-burning stove
- Spacious and versatile ground floor accommodation
- Farmhouse-style fitted kitchen
- Separate dining room with bi-fold doors and lantern roof lights
- Flexible two/three bedroom first floor layout
- Attractive mature front and rear gardens
- Detached carport and private driveway parking
- Sought-after village location in Witnesham with excellent access to Ipswich and the A14







Total area: approx. 86.0 sq. metres (925.7 sq. feet)

All measurements have been taken as a guide to prospective buyers only and are not precise. This plan is for illustrative purposes only and no responsibility for any error, omission or misstatement. The services, systems and appliances shown have not been tested and no guarantee as to their operability or efficiency can be given. Measurements may have been taken from the widest area and may include wardrobe/cupboard space. No guarantee is given to any measurements including total areas. Buyers are advised to take their own measurements.

© @modephotouk | www.modephoto.co.uk
Plan produced using PlanUp. □

The Street, Witnesham



Potters Estate Agents

Potters Estate Agents, 6 Market Hill - IP12 4LU

01394 447487 • enquiries@pottersestateagents.com • www.pottersestateagents.com/