

# WILKINSON

SALES • LETTINGS • MANAGEMENT

£310,000

Plantation Crescent, Bredon, Tewkesbury, GL20



WILKINSON  
SALES • LETTINGS • MANAGEMENT  
FOR SALE  
01684 367736 www.wilkinsonslm.co.uk

 **3**  
Bedrooms

 **1**  
Bathroom

101 High Street, Tewkesbury, Gloucestershire, GL20 5JZ |  
Info@wilkinsonslm.co.uk

01684 367736





- Semi Detached House
- Lounge/Dining Room
- Kitchen
- Three Bedrooms
- Bathroom
- Front & Rear Gardens
- Garage & Off Road Parking
- Porch
- Gas Central Heating
- UPVC Double Glazing
- NO ONWARD CHAIN

Wilkinson SLM is delighted to present to the market a three-bedroom semi-detached home, nestled in a quiet cul-de-sac in the highly sought-after village of Bredon. Offered with NO ONWARD CHAIN, this house is a fantastic opportunity for buyers looking to modernise and make a home their own.

Upon entering, you are welcomed by a practical entrance porch leading into a dual aspect lounge/dining room. The lounge features stairs to the first floor, space for a dining table and chairs and access to the kitchen. The kitchen is fitted with a range of wall and base units and provides space for a fridge freezer, washing machine and oven. A useful pantry offers additional storage and patio doors open out to the rear garden.

The first floor comprises of three bedrooms and a family bathroom. Bedroom one has the added benefit of original up and over built-in wardrobes.

The rear garden features mature shrubs, a paved patio area ideal for outdoor seating, a lawn, and two garden sheds. There is also convenient side access to the garage.

Further complementing this home is UPVC double glazing, gas central heating and off road parking on the driveway.

**Lounge/Dining Room** 22' 2" x 17' 2" (6.76m x 5.23m)  
Maximum Measurements

**Kitchen** 10' 1" x 8' 7" (3.07m x 2.62m)

**Bedroom One** 13' 0" x 8' 3" (3.96m x 2.51m)  
Maximum Measurements

**Bedroom Two** 8' 10" x 9' 8" (2.69m x 2.95m)

**Bedroom Three** 10' 0" x 7' 2" (3.05m x 2.18m)

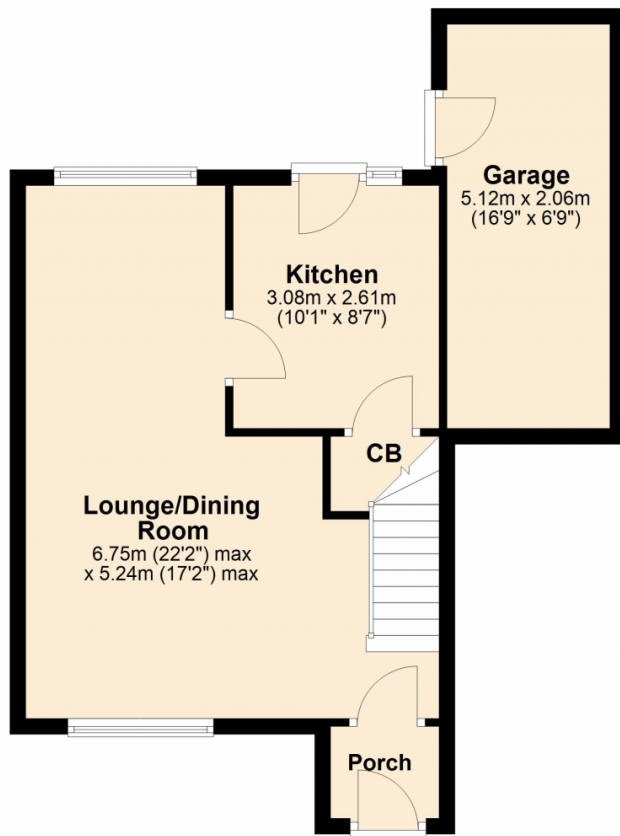
**Bathroom** 5' 7" x 7' 2" (1.70m x 2.18m)

**Garage** 16' 9" x 6' 9" (5.11m x 2.06m)



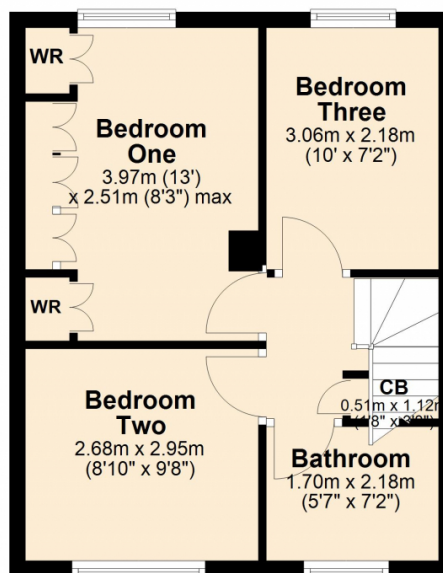
## Ground Floor

Approx. 47.9 sq. metres (516.1 sq. feet)



## First Floor

Approx. 35.3 sq. metres (380.4 sq. feet)



Total area: approx. 83.3 sq. metres (896.5 sq. feet)

