



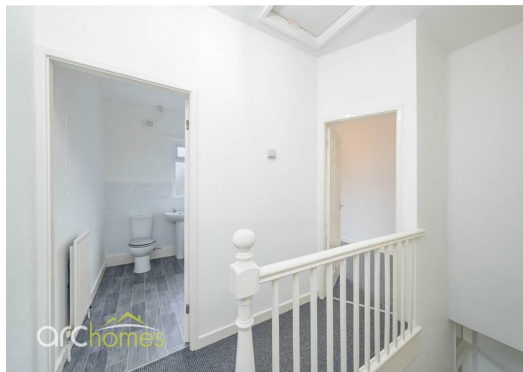
25 Castle Street, Tyldesley, M29 8FP £850 Per month

ARC HOMES are delighted to offer TO LET this excellent two bedroom terraced property positioned within a popular location in Tyldesley. this property is ready to move into immediately and early viewing is advised. Entry is via an entrance vestibule which leads into a well proportioned sitting room. To the rear sits the modern refitted kitchen dining room which compels the ground floor. To the first floor are two generous bedrooms and a modern bathroom. Outside is a private enclosed rear yard which is not directly overlooked.



Energy Efficiency Rating		
	Current	Potential
Very energy efficient - lower running costs		
(92 plus) A		
(81-91) B		
(69-80) C		
(55-68) D		
(39-54) E		
(21-38) F		
(1-20) G		
Not energy efficient - higher running costs		
England & Wales	EU Directive 2002/91/EC	

Environmental Impact (CO ₂) Rating		
	Current	Potential
Very environmentally friendly - lower CO ₂ emissions		
(92 plus) A		
(81-91) B		
(69-80) C		
(55-68) D		
(39-54) E		
(21-38) F		
(1-20) G		
Not environmentally friendly - higher CO ₂ emissions		
England & Wales	EU Directive 2002/91/EC	



30 Bolton Old Road, Atherton, M46 9DL

T. 01942 363599
info@arc-homes.net

