



**Price**  
**£575,000**

**Freehold**

4x  2x  1x 

**Wigmore Road,  
Wigmore, Gillingham,  
Kent, ME8**

**OVER 60?**

Secure this property  
for up to **59% less!**

*Wards*  
Helping you move forwards



## Main features

- A deceptively spacious property that would make an amazing long term family home
- Generous 18ft lounge and traditional fitted kitchen
- Useful downstairs cloakroom
- Impressive private rear garden and substantial driveway
- Sought after Wigmore location

## Accommodation

### GROUND FLOOR

Porch  
 Entrance Hall  
 Downstairs Cloakroom  
 Lounge : 18'0 x 11'8 (5.49m x 3.56m)  
 Dining Area : 11'7 x 10'5 (3.53m x 3.18m)  
 Kitchen: 13'6 x 11'9 (4.12m x 3.58m)

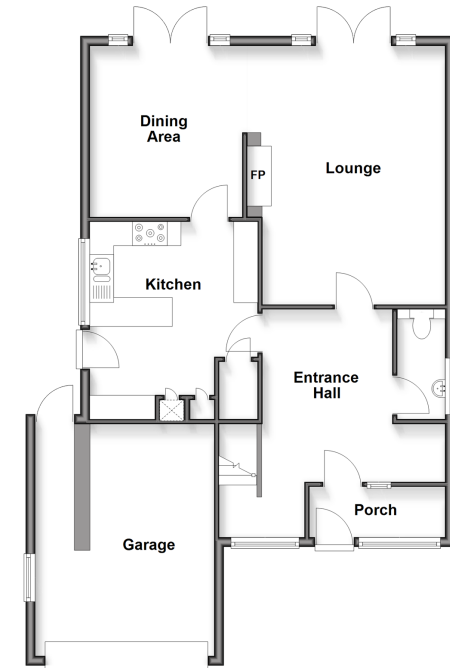
### FIRST FLOOR

Landing  
 Bedroom 1 : 15'3 x 11'8 (4.65m x 3.56m)  
 En-Suite Shower Room  
 Bedroom 2 : 18'0 x 9'8 (5.49m x 2.95m)  
 Bedroom 3 : 11'6 x 11'6 (3.51m x 3.51m)  
 Bedroom 4 : 13'6 x 8'2 (4.12m x 2.49m)  
 Shower Room

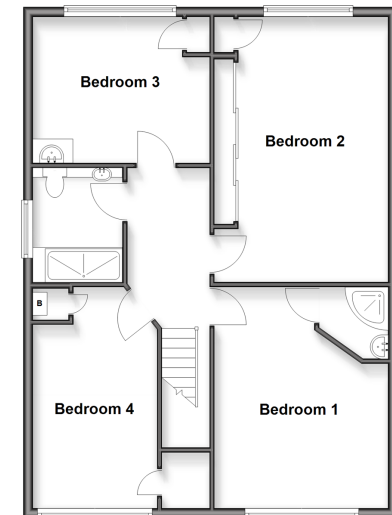
### OUTSIDE

Front Garden  
 Rear Garden  
 Garage : 16'5 x 12'1 (5.01m x 3.69m)  
 Driveway

**Ground Floor**  
 Approx. 88.0 sq. metres (947.5 sq. feet)



**First Floor**  
 Approx. 76.1 sq. metres (819.0 sq. feet)



**Call Rainham - 01634 373531 ■ [wardsofkent.co.uk](http://wardsofkent.co.uk)**

- Legal advice should be taken to verify fixtures/fittings, planning, alterations and/or lease details
- Appliances & services are untested, dimensions are approximate and floor plans are not to scale
- Through a Homewise Home For Life Plan people aged 60+ can secure this property for up to 59% less, by purchasing a Lifetime Lease



11339169/20251220/DW/DW