



Abbots Park, SW2

£500,000

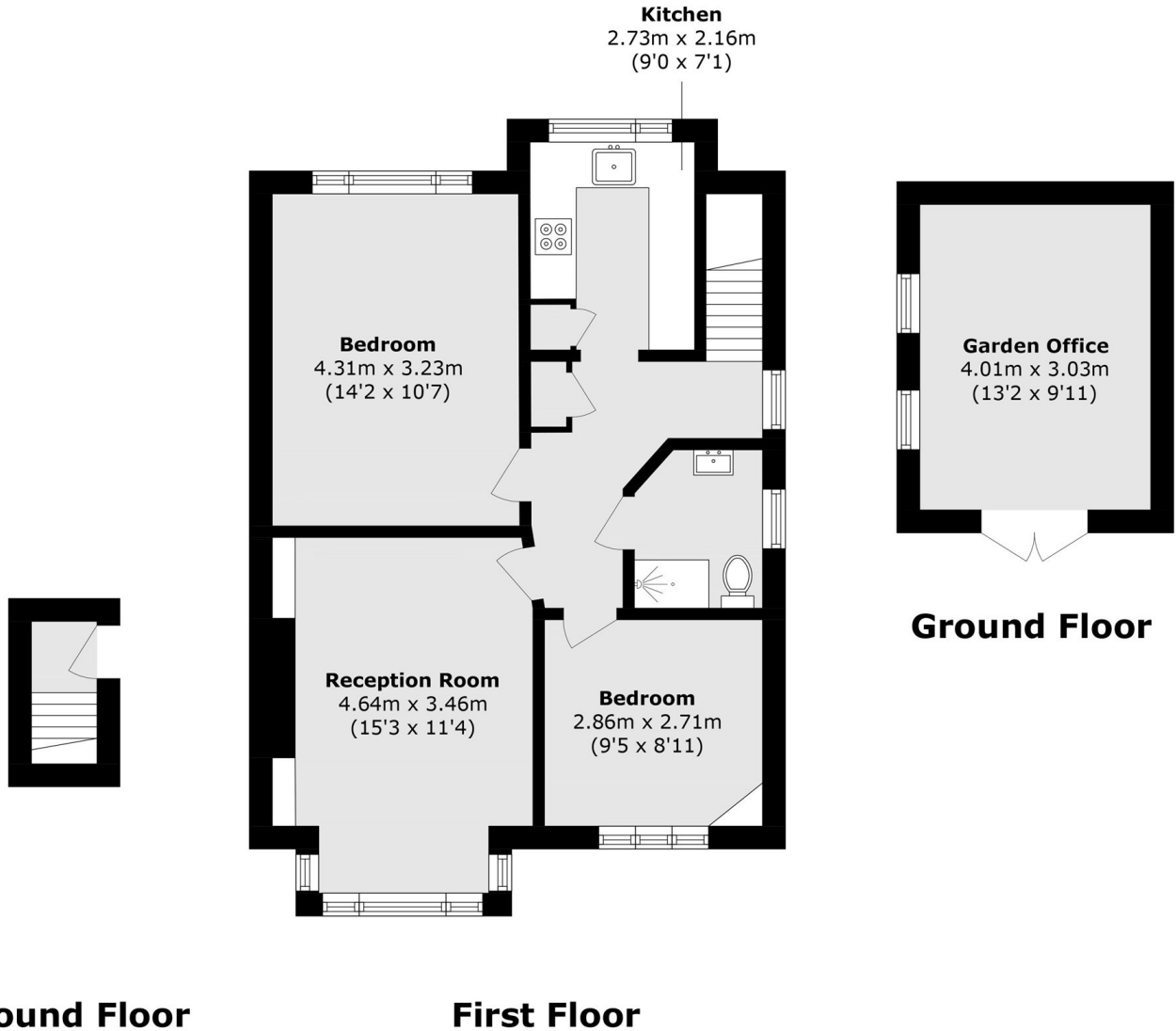
Located on the first floor of this purpose-built property, this charming two bedroom maisonette offers well balanced living space and the added benefit of a private garden. The property features a modern kitchen and contemporary bathroom, both thoughtfully updated, along with two well proportioned double bedrooms. In addition, there is a spacious garden room, ideal for use as a home office, studio, or study, providing valuable extra living space.

Abbots Park is a quiet residential street situated just off Tulse Hill in South London. The area benefits from excellent transport connections, with Tulse Hill railway station located nearby, providing direct services into central London destinations including London Bridge and Blackfriars station.

Features

- Two Double Bedrooms
- Own Front Door
- Modern Kitchen & Bathroom
- Home Office
- Private Garden
- Excellent Location

Abbots Park, London, SW2



Total area (approx.): 58.4 sq. m (628.6 sq. ft)
Outbuilding area (approx.): 12.1 sq. m (130.2 sq. ft)