



Roedean Crescent
Putney, SW15

CHESTERTONS





A stunning, detached, family home on one of south west London's premier roads. Located adjacent to Richmond Park this substantial property has five bedrooms, off-street parking for several cars and a stunning south-west facing garden.

The ground floor comprises a large entrance hallway, a light spacious reception, a living room, a conservatory and a stunning kitchen adjoining the dining room that looks out to the garden.

The property also benefits from a utility room, WC and integral garage.

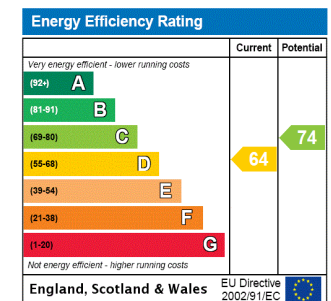
On the first floor is a superb main bedroom suite with a fantastic roof terrace, en-suite bathroom and dressing room. There is a further large double bedroom and family bathroom plus two smaller doubles and a single bedroom or office.

The house had planning granted in 2016 (now lapsed) to build a replacement new home of 6,500 sq. ft.

Roedean Crescent is situated next to Richmond Park, with Barnes, East Sheen, Richmond and Putney all close by.

- Substantial detached family home
- On one of south west London's premier roads adjacent to Richmond Park
- Large 167ft south west facing garden
- Driveway parking for multiple cars
- Garage
- Expired planning permission to build a new 6,500 sq. ft. house

Asking Price £3,250,000



Tenure: Freehold

Local Authority: Wandsworth

Council Tax Band: H

Chestertons East Sheen Sales

254A Upper Richmond Road West

East Sheen

London

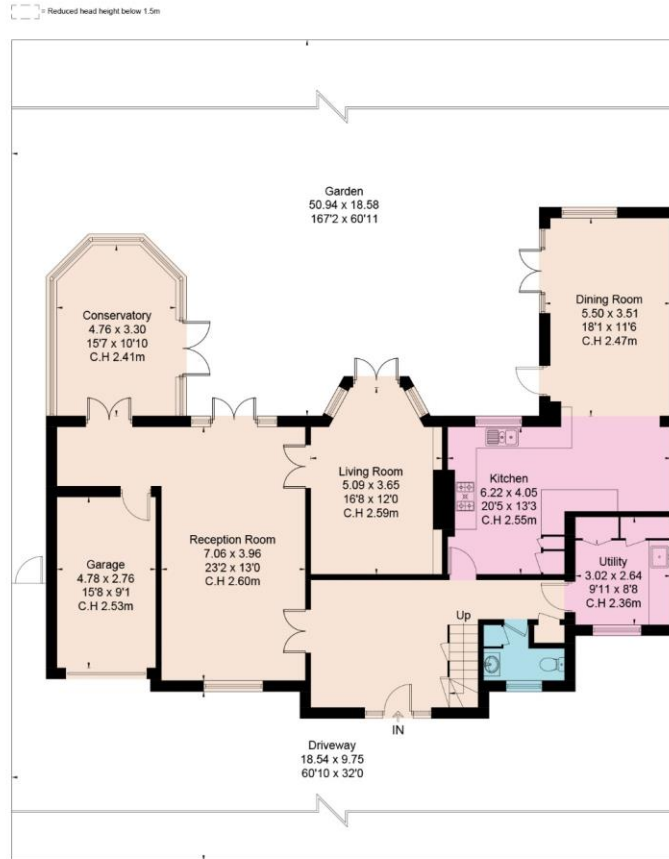
SW14 8AG

sheen@chestertons.co.uk

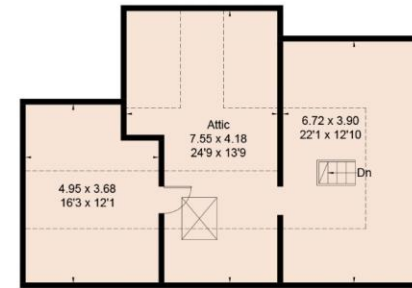
020 8104 0580

ROEDEAN CRESCENT, SW15

Approximate Floor Area = 339.9 sq m / 3659 sq ft
(Including Garage / Excluding Void)



Ground Floor



Second Floor



First Floor



This floor plan has been drawn in accordance with RICS Property Measurement 2nd edition.
All measurements, including the floor area, are approximate and for illustrative purposes only @djd.london #75661

Chesterton UK Services Limited trading as Chestertons for themselves and for the vendor of this property whose agents they are, give notice that (i) these particulars do not constitute any part of an offer or contract, (ii) all statements contained within these particulars are made without responsibility on the part of Chestertons or the vendor, (iii) whilst made in good faith, none of the statements contained within these particulars are to be relied upon as a statement or representation of fact, (iv) any intending purchasers must satisfy themselves by inspection or otherwise as to the correctness of each of the statements contained within these particulars, (v) the vendor does not make or give either Chestertons or any person in their employment any authority to make or give representation or warranty whatsoever in relation to this property. Wide angle lenses may be used. ©Copyright Chestertons | Chesterton UK Services Limited | Registered Office 40 Connaught Street, Hyde Park, London W2 2AB Registered Company Number 05334580.



This paper is 100% recyclable