



**Guide Price**  
**£475,000**

**Freehold**

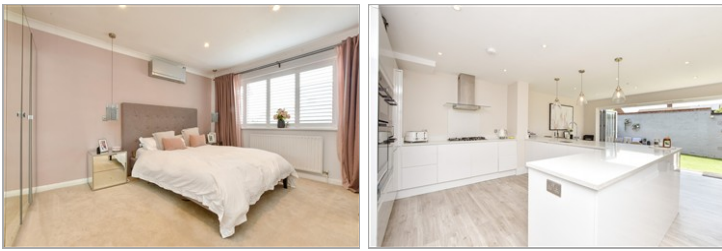
4x  1x  2x 

**Chilham Road,  
Maidstone, Kent ME16**

**OVER 60?**

Secure this property  
for up to **59% less!**

*Wards*  
Helping you move forwards



## Main features

- Beautifully extended house
- Cul-de-sac location
- Modern open plan kitchen/dining area
- Beautiful landscaped garden with garage en-bloc
- Prime location for commuting

## Accommodation

### GROUND FLOOR

Entrance Porch

Cloakroom: 5'9 x 2'9 (1.75m x 0.84m)

Lounge: 15'0 x 14'0 (4.58m x 4.27m)

Kitchen/Dining Area: 22'0 x 16'0 (6.71m x 4.88m)

### FIRST FLOOR

Landing

Bedroom 1: 14'0 x 11'0 (4.27m x 3.36m)

Bedroom 2: 16'0 x 8'0 (4.88m x 2.44m)

Bedroom 3: 11'0 x 7'0 (3.36m x 2.14m)

Bedroom 4: 9'0 x 6'0 (2.75m x 1.83m)

Shower Room

### OUTSIDE

Rear Garden

Front Garden

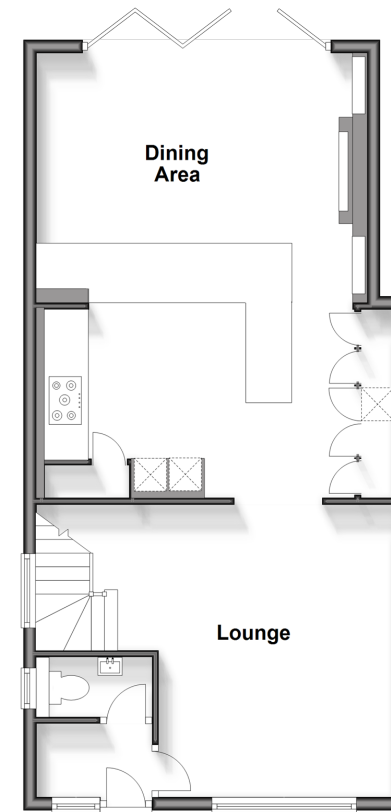
Off Road Parking

Garage En-Bloc

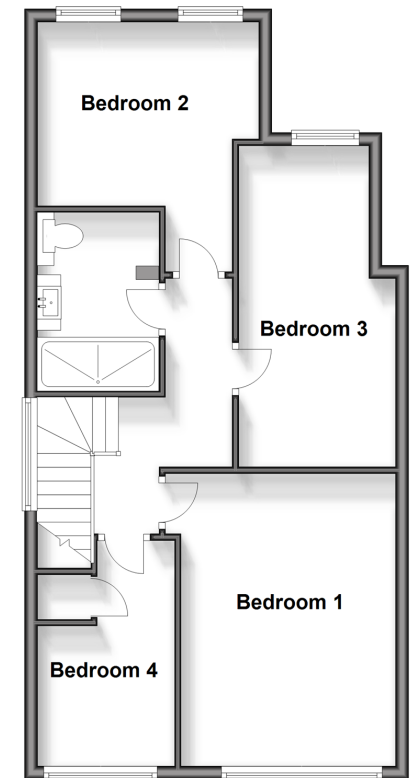
**Call Maidstone - 01622 683737 ■ [wardsof Kent.co.uk](http://wardsof Kent.co.uk)**

- Legal advice should be taken to verify fixtures/fittings, planning, alterations and/or lease details
- Appliances & services are untested, dimensions are approximate and floor plans are not to scale
- Through a Homewise Home For Life Plan people aged 60+ can secure this property for up to 59% less, by purchasing a Lifetime Lease

**Ground Floor**  
Approx. 61.0 sq. metres (656.6 sq. feet)



**First Floor**  
Approx. 57.4 sq. metres (617.9 sq. feet)



13145652/20260119/CV/KW